

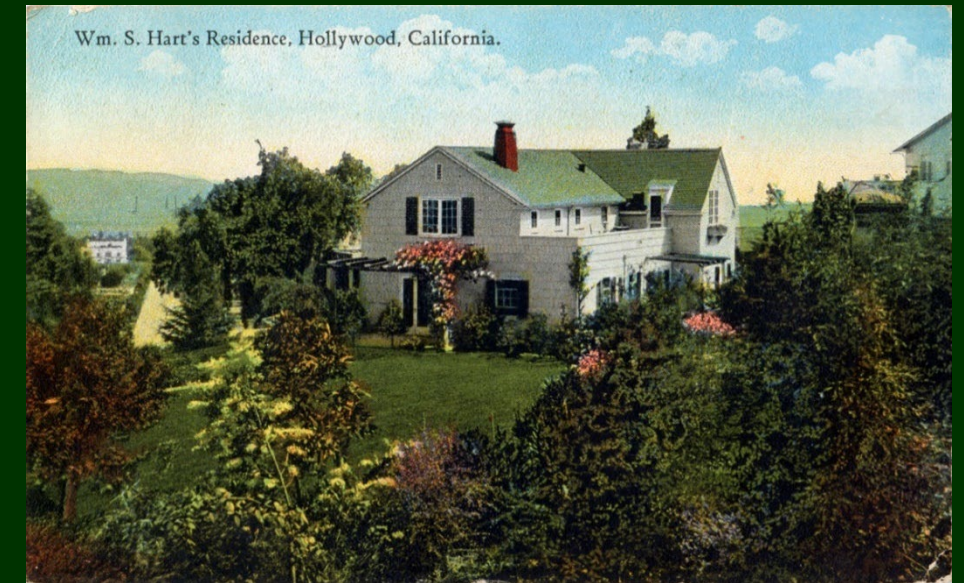


WILLIAM S. HART PARK IMPROVEMENTS

City Council Ad-Hoc Subcommittee Meeting #2
Monday, August 11, 2025



MEETING AGENDA:



1. Call to Order
2. Update on City of West Hollywood **Protocols and Practices**
3. Proposed **Off-Leash Play Area Materials**
4. Discussion of **Preferred Features and Amenities**
5. Public Comment
6. Comments from Ad-Hoc Subcommittee Members
7. Next Steps
8. Adjournment

June 30, 2025 Ad-Hoc Subcommittee Meeting #1

Return with additional information on:

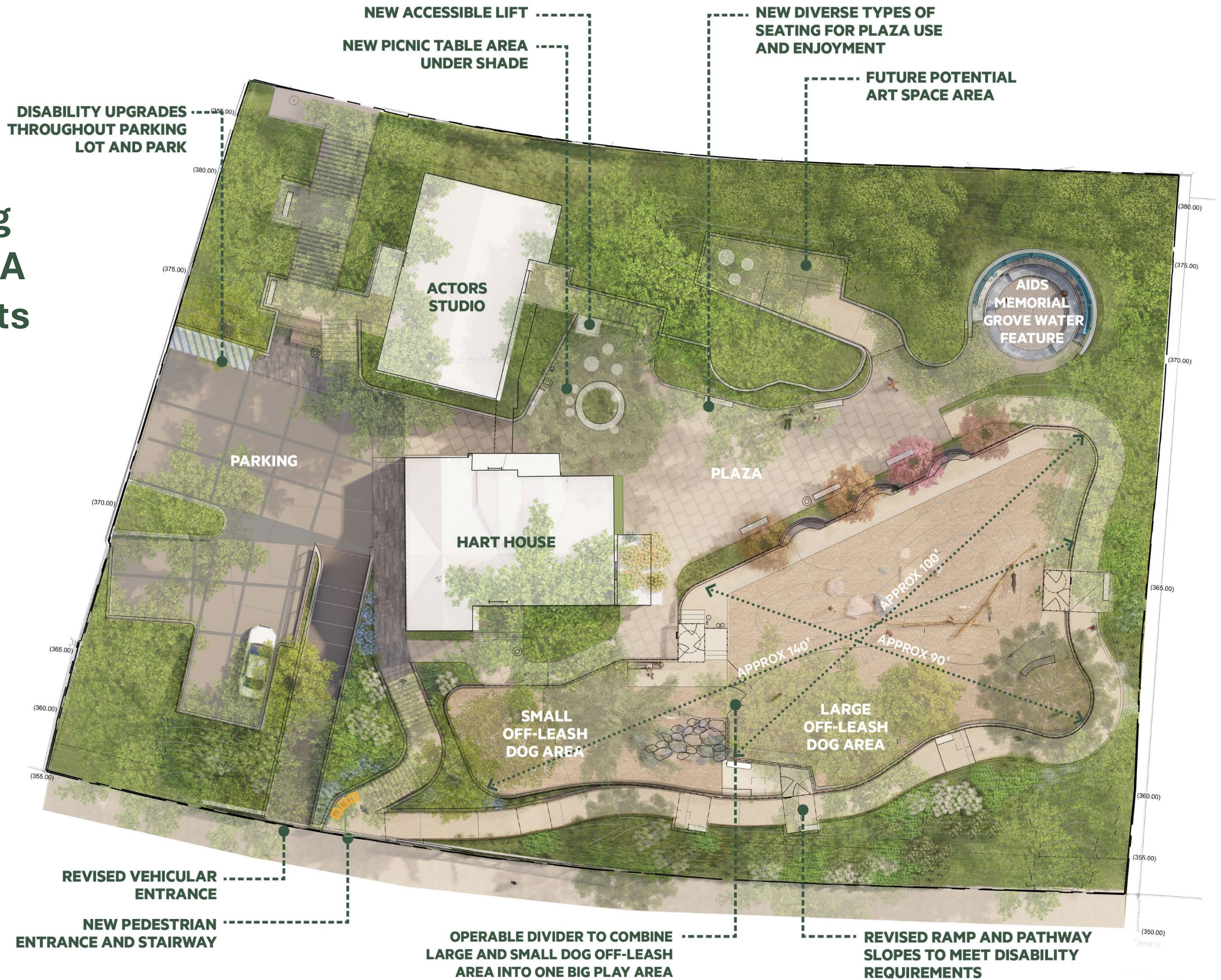
1. Provide an update on City policies and procedures at Hart Park.
2. Look into minor adjustments to increase total off-leash dog area.
3. Proposed engineered wood fiber (EWF), with case studies from other dog parks.
4. Show proposed seating in more detail, illustrate how it can deter unwanted uses.
5. Show additional information on off-leash dog area materials.

Update on City of West Hollywood Protocols and Practices



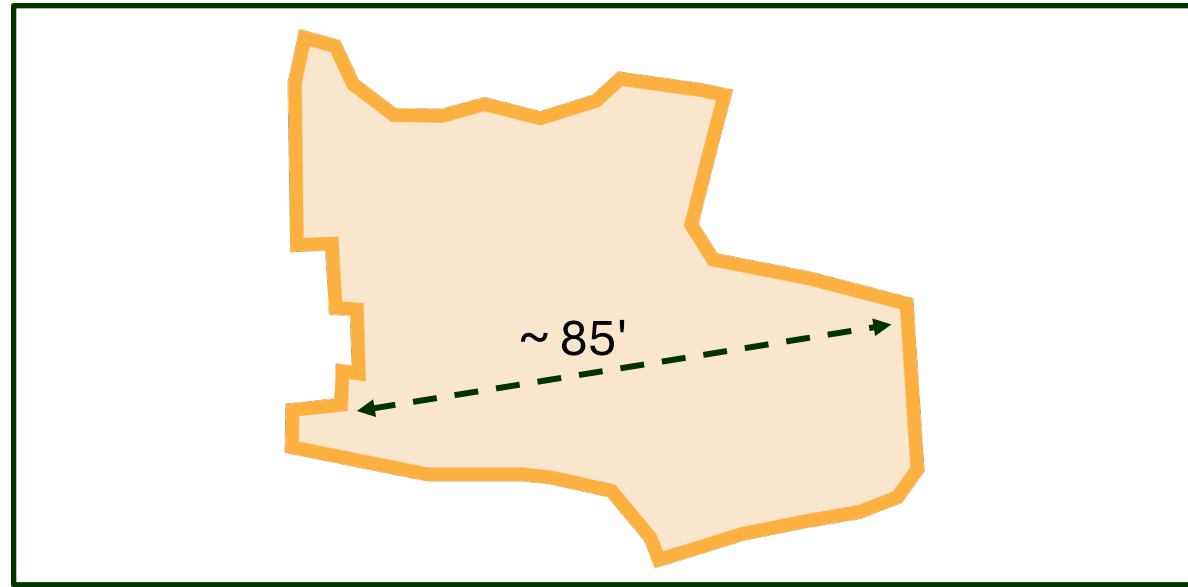
Site Plan

Incorporating Proposed ADA Improvements



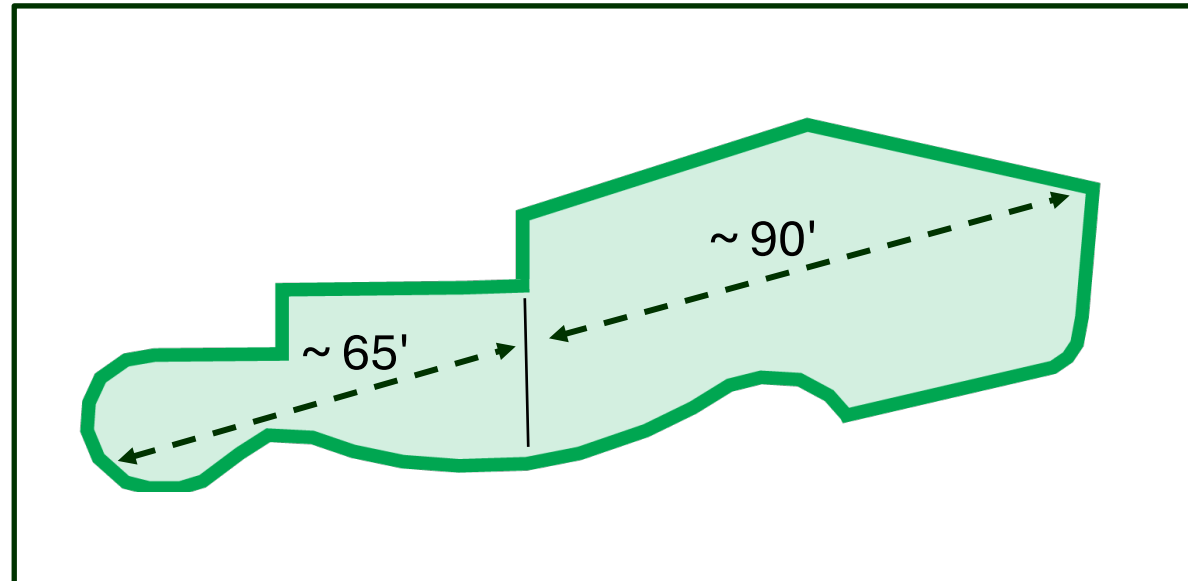
Off-Leash Play Area Square Footage Comparison

Dog Run
Distance



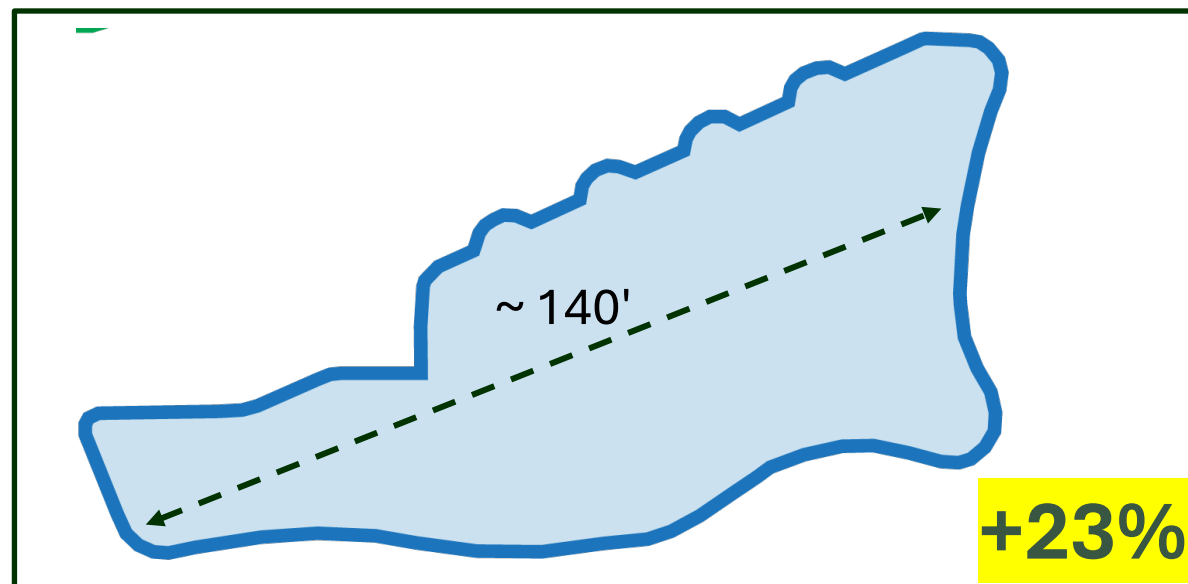
1- Current Temporary Fenced Area

5,218 sf (Total dog area)



2- City Council Approved Configuration 2023

5,215 sf (Large dog area- 3,535 sf / Small dog area- 1,680 sf)



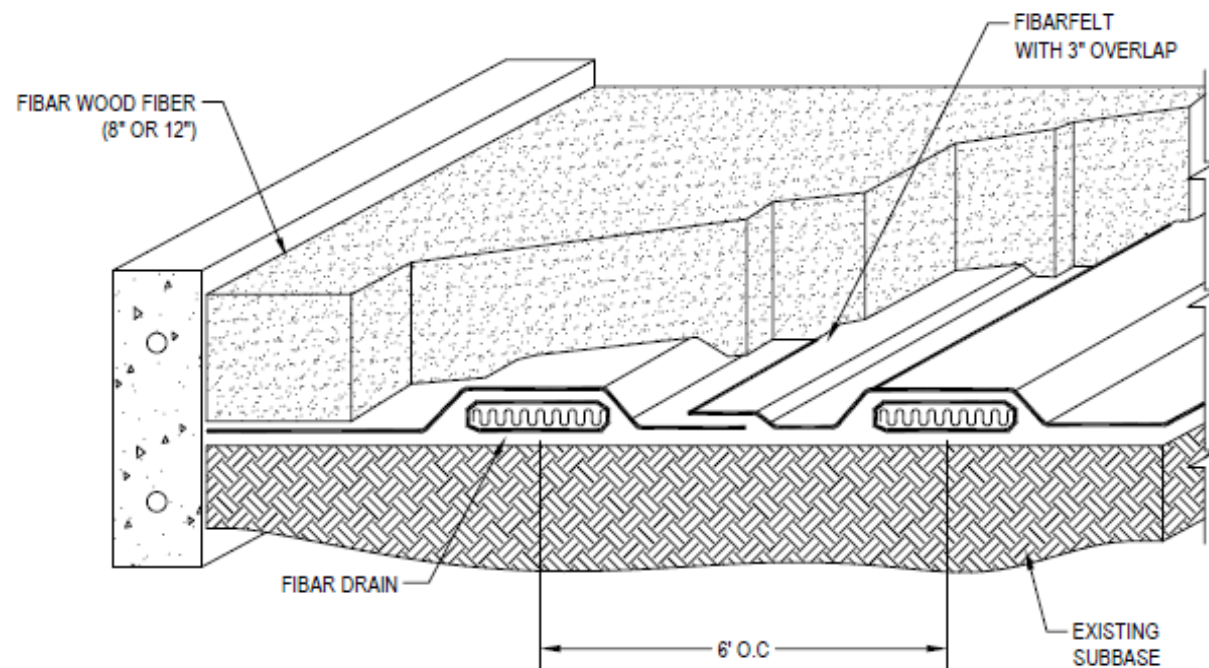
3- Updated Proposed Area

240 sf larger than previously presented in June
6,455 sf (Large dog area- 4,865 sf / Small dog area- 1,590 sf)

Proposed Off-Leash Play Area Materials

Engineered Wood Fiber (EWF) vs. Standard Wood Chips

- EWR is installed as a system, with drainage mat and approx. 12” depth.
- Manufactured with 100% virgin wood.
- Other wood chip products may be made with used wood, which can contain dyes, glues, petroleum products, or other additives.



- IPEMA CERTIFIED - International Play Equipment Manufacturers Association provides a Third-Party Certification service whereby an independent laboratory validates a surfacing manufacturer's conformance to ASTM F 1292, Standard Specification for Impact Attenuation of Surfacing Materials within the Use Zone of Playground Equipment and for an Engineered Wood Fiber manufacturer, its certification of conformance also to ASTM F 2075, Standard Specification for Engineered Wood Fiber for Use as a Playground Safety Surface Under and Around Playground Equipment.

Proposed Off-Leash Play Area Materials

Oberrieder Dog Park, Playa Vista, CA

- Discussed EWF with facilities staff at Playa Vista. Staff and community are generally happy with the product. Playa Vista parks has also used artificial turf, decomposed granite (DG), and natural turf at other parks. Their current preferences are for EWF and artificial turf.
- Park includes separated small dog area and large dog areas.
- Very safe for dogs, and they have seen less issues related to consumption by dogs compared to standard wood chips. Cleaner than standard wood chips.
- Chips are replenished annually.



Engineered Wood Fiber (EWF) Case Studies

Proposed Off-Leash Play Area Materials

Pantera Park, Diamond Bar, CA

- Discussed EWF with facilities staff at Diamond Bar. Staff and community are generally happy with the product.
- EWF installed in 2010-2011, by local supplier Turboscape.
- Park includes separated small dog area and large dog areas.
- Same specification as what is used at children's playgrounds.
- Basic raking + maintenance every 2-3 days.
- More material added every 2 years, while old material decomposes beneath surface layer.
- EWF is impact attenuating. It tends to interlock and remain stable and in place. Only issues are areas with steep slopes, similar to any wood chip product.



Engineered Wood Fiber (EWF) Case Studies

Discussion of Preferred Features and Amenities

Off-the-Shelf Products



PROS

- Easier to Change Out
- Simple Installation
- Lower Up-Front Cost

CONS

- Less Durable
- Maintenance Costs
- Standardized
- Replacement parts not always available



Integrated Design

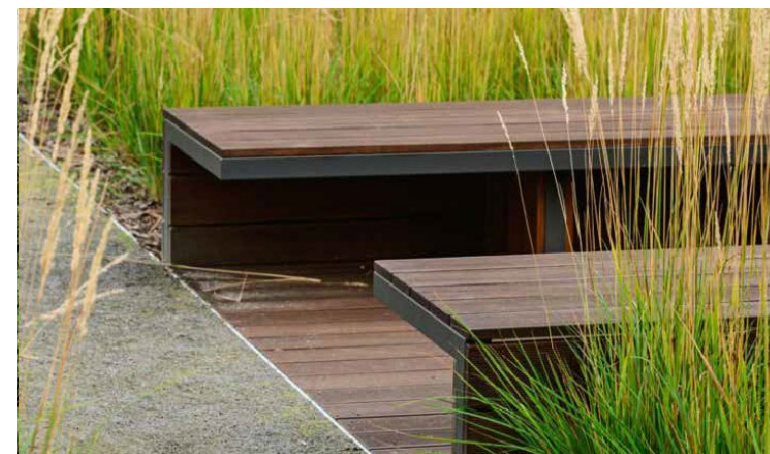


PROS

- More Durable
- Low-Maintenance
- Organic Materials

CONS

- High Up-Front Cost
- Costly Installation
- Material Sourcing



Discussion of Preferred Seating Options

Creative Bench & Table



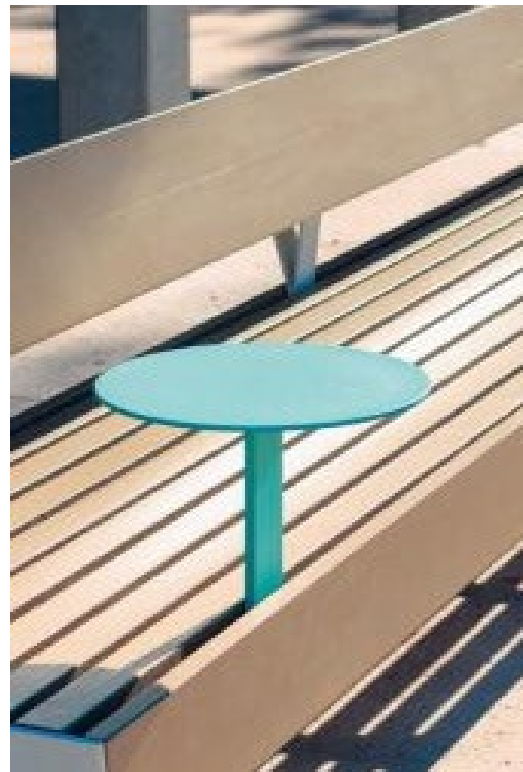
Perimeter Bench



Cantilevered Seating



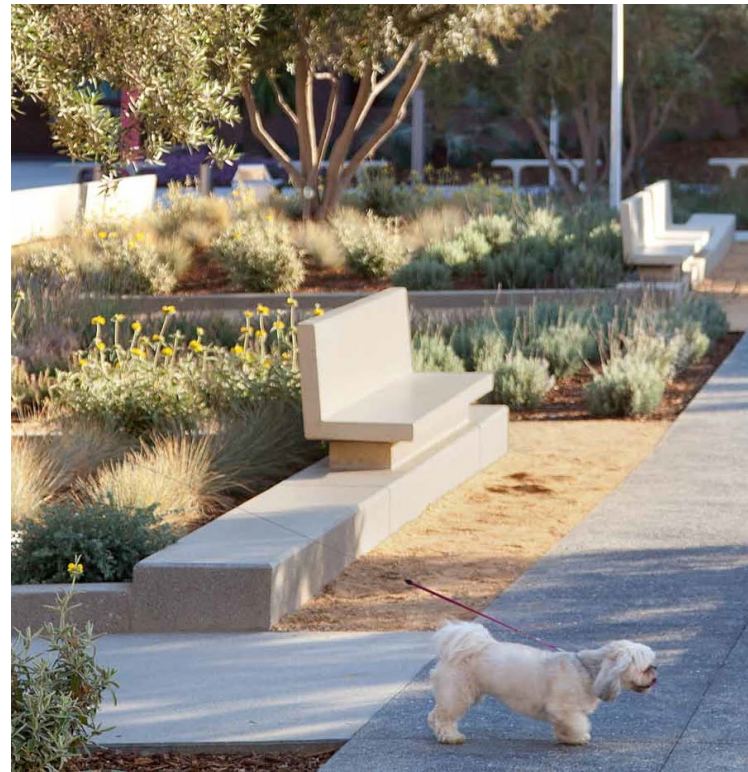
Task Table



Scattered Seats



Seat Bench Combo



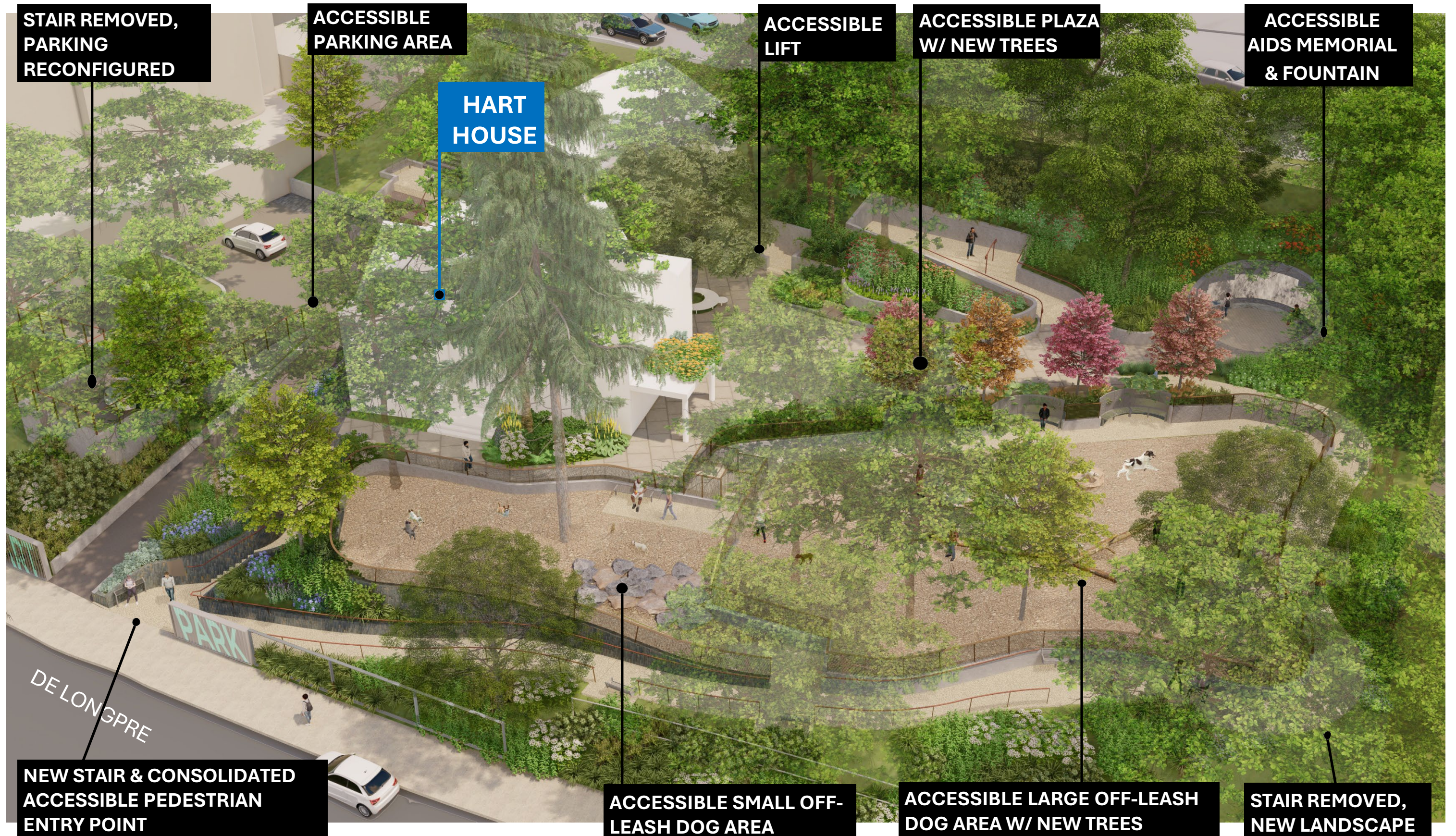
Stoops/Seating Blocks



NEXT STEPS:

- Off-leash play area materials, amenities, and other Ad-Hoc Subcommittee recommendations will be **presented to City Council in October 2025** (projected date).
- Construction documents on track to be submitted to plan check near the end of 2025, with a return to the City Council after bidding with contractor selection recommendations and an award of a Contract for Construction in **mid-2026**.

THANK YOU.



PUBLIC MEETINGS AND OUTREACH

- **City Council Meeting on March 19, 2018** | [Staff Report](#)
- **Community Outreach Event on February 1, 2020 at Hart Park** [Press Release](#) | [Photos from Event](#)
- **Community Outreach Event on February 5, 2020** at West Hollywood Park.
- **Community Outreach Event on February 10, 2020** at Plummer Park.
- **Community Outreach Event on February 20, 2020** at Plummer Park. | [Presentation](#)
- **Community Outreach Event on October 29, 2020** (Virtual) | [Press Release](#)
- **Disabilities Advisory Board Meeting on September 23, 2020**
- **Sunset Strip Business Improvement District Presentation on March 15, 2021**
- **Public Facilities Commission Meeting on Wednesday, May 12, 2021**
- **City Council Meeting on April 3, 2023** | [Staff Report](#) | [Attachment A- CASp Report](#) | [Attachment B- Concept Plans](#) | [Attachment C- Additional Park Enhancement Identified by the Community](#)
- **City Council Meeting on September 16, 2024** | [Staff Report](#)
- **Public Facilities, Recreation, and Infrastructure Commission Meeting on Wednesday, February 12, 2025** at 6:30 p.m. at the West Hollywood City Hall Community Meeting Room, 1st Floor, located at 8300 Santa Monica Boulevard. | [Agenda](#)
- **Disabilities Advisory Board Meeting on Wednesday, February 26, 2025** at 6 p.m. at the Plummer Park Community Center, Rooms 5 and 6, located at 7377 Santa Monica Boulevard. | [Staff Report](#)
- **Older Adults Advisory Board Meeting on Wednesday, March 5, 2025** at 2 p.m. at the West Hollywood City Hall Community Meeting Room, 1st Floor, located at 8300 Santa Monica Boulevard. | [Staff Report](#)
- **Historic Preservation Commission Meeting on Monday, May 12, 2025** at 7 p.m. at the Plummer Park Community Center, Rooms 5 and 6, located at 7377 Santa Monica Boulevard. | [Agenda](#)
- **City Council Hart Park Ad-Hoc Subcommittee Meeting** on **Monday, June 30, 2025** at 5:30 p.m. at the West Hollywood City Hall Community Meeting Room, 1st Floor, located at 8300 Santa Monica Boulevard. | [Agenda](#) | [Presentation](#)