



WILLIAM S. HART PARK IMPROVEMENTS

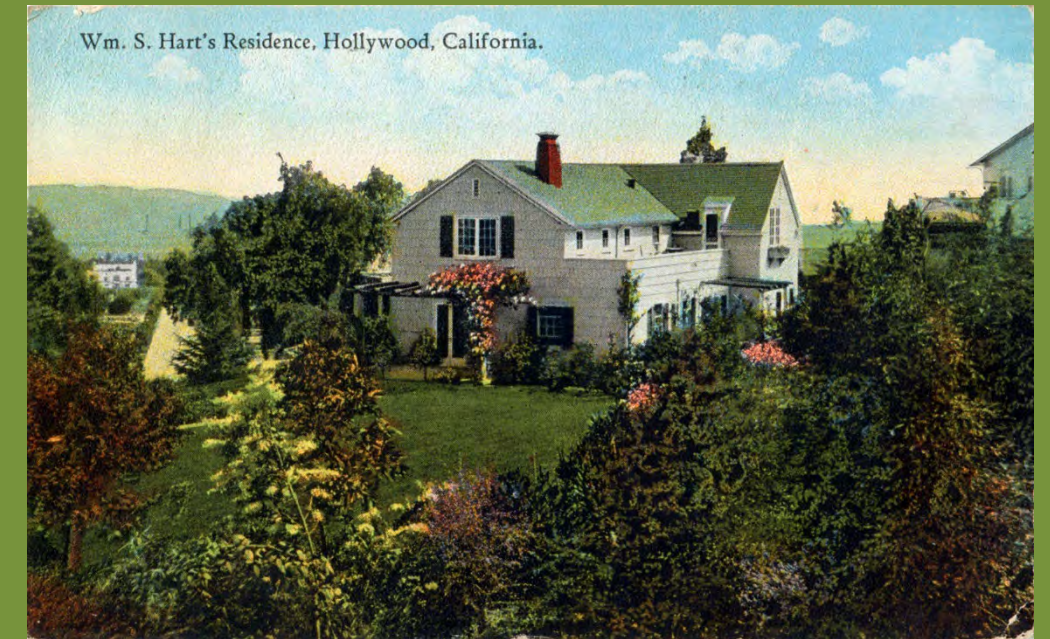
City Council Ad-Hoc Subcommittee Meeting
Monday, June 30, 2025



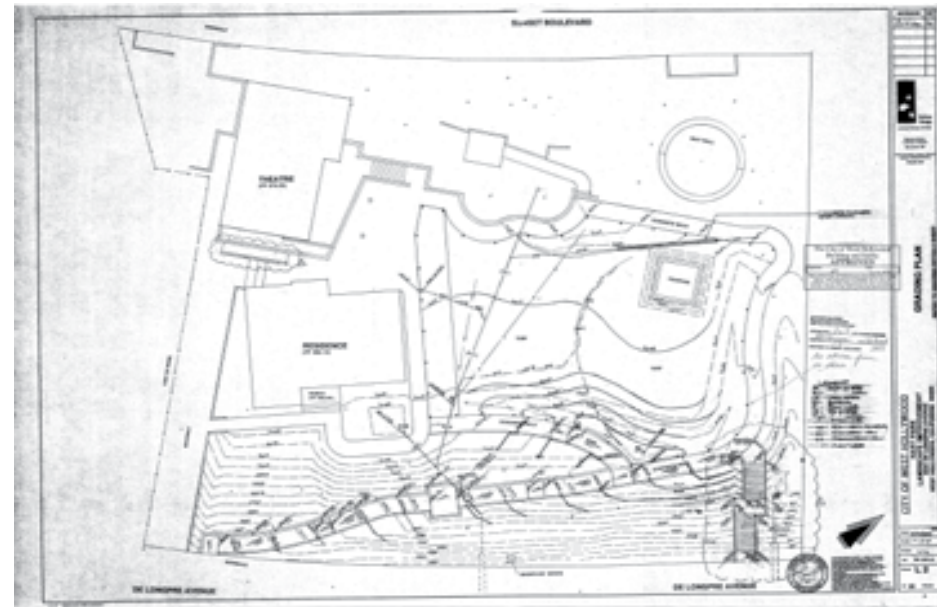
SOIS

MEETING AGENDA:

1. Call to Order
2. Overview of the Project
3. Project Background and Community Engagement to Date
- 4. Receive An Update** on the Design Progress for the Phase 1 Project.
- 5. Provide Feedback And Input** on the Proposed Off-leash Play Area Materials
6. Public Comment
7. Comments from Ad-hoc Subcommittee Members
8. Next Steps
9. Adjournment



PROJECT BACKGROUND & ENGAGEMENT



1984-1990

Incorporation of West Hollywood, lease of park from City of Los Angeles. Initial improvements including landscaping, lawn, a small AIDS Memorial, fountain, and seating.

1999

Off-leash dog play area authorized by City Council on a trial basis.

2004

Public Facilities Commission Ad-Hoc Committee explored initial off-leash play area reconfiguration options.

March 19, 2018

City Council directed staff to develop a comprehensive plan for improvements including disability access/ compliance with the Americans with Disabilities Act (ADA).

August 8, 2018

Formation of a new **Public Facilities Commission Hart Park Ad-Hoc Committee**.

2020-2021

Preparation of initial concept design studies, outreach, and **Ad-Hoc Committee** engagement.

May 12, 2021

Review of initial concepts and recommendations from the **PFC**. Input was also received from the **Disabilities Advisory Board (DAB)** at this time.

April 3, 2023

City Council review of outreach and recommendations from **PFC** and **DAB**, and approval of initial concept design. Approval of Phase 1 and Phase 2 Approach.

September 16, 2024

City Council approval of award of design contract with Stoss for design and engineering, with direction to explore more “**natural**” material surfacing options for the off-leash play area.

October 2024

Present- Site analysis and schematic design options prepared by team for review by **PFC, DAB, HPC, and Older Adults Advisory Board**.

PROJECT GOALS & DRIVERS

- **Upgrade and reconfigure park paths,** parking lot, AIDS memorial, and off-leash play area for accessibility and ADA compliance per the **CASp** report.
- **Reconfigure off-leash play area** per previous Council and Commission direction, for accessibility purposes and to create new usable park space to the north of the dog area with a more open view to the Hart House.
- **Improve site security and pedestrian circulation,** upgrade stair and park entry locations, signage, lighting, and seating.
- **Retain existing canopy trees where possible,** and provide replacement for those that must be removed to create accessible paths.
- **Consider natural materials,** canopy trees, and other design features in support of the City's Climate Action and Adaptation Plan (CAAP).



SITE CHALLENGES (Existing Conditions)

Slopes, Connectivity, and Accessibility



Parking Area

Slopes need to **be re-graded and reconfigured** for disability compliance with full mobility access, signage, and a van-accessible space.

Path and Walkways Throughout the Park

Need to be **reconfigured and expanded for disability compliance** with reduced slopes, new landings with accessible companion seating areas, and handrails for steeper ramped portions.

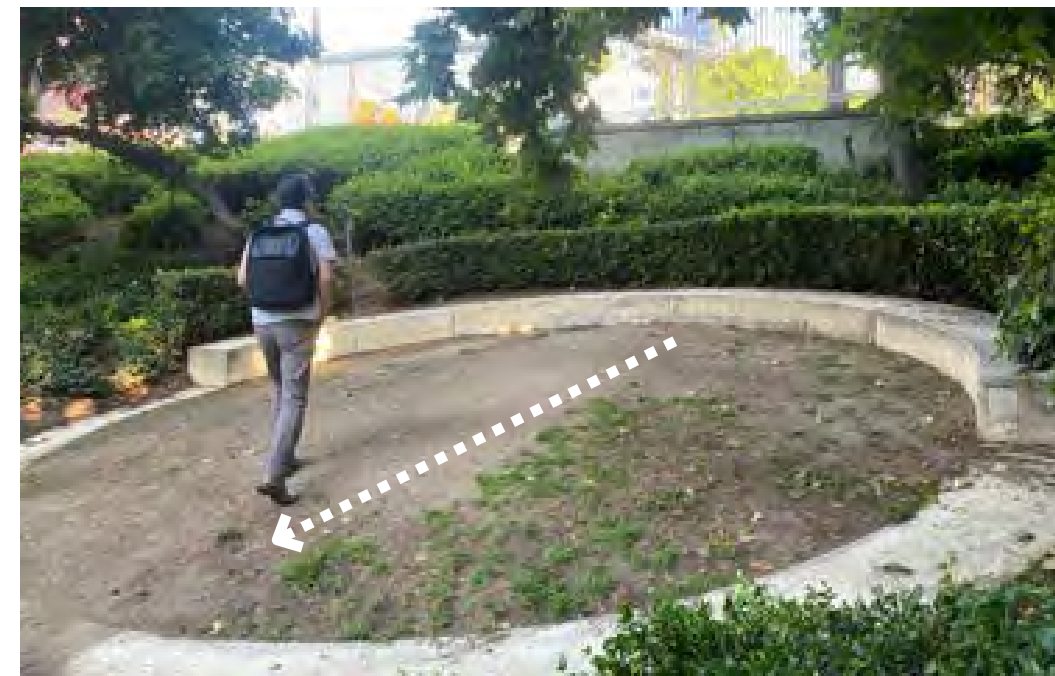
SITE CHALLENGES (Existing Conditions)

Slopes, Connectivity, and Accessibility



Off-Leash Dog Area

Needs to be **reconfigured for disability compliance** with reduced slopes, accessible surfaces, and accessible seating areas.



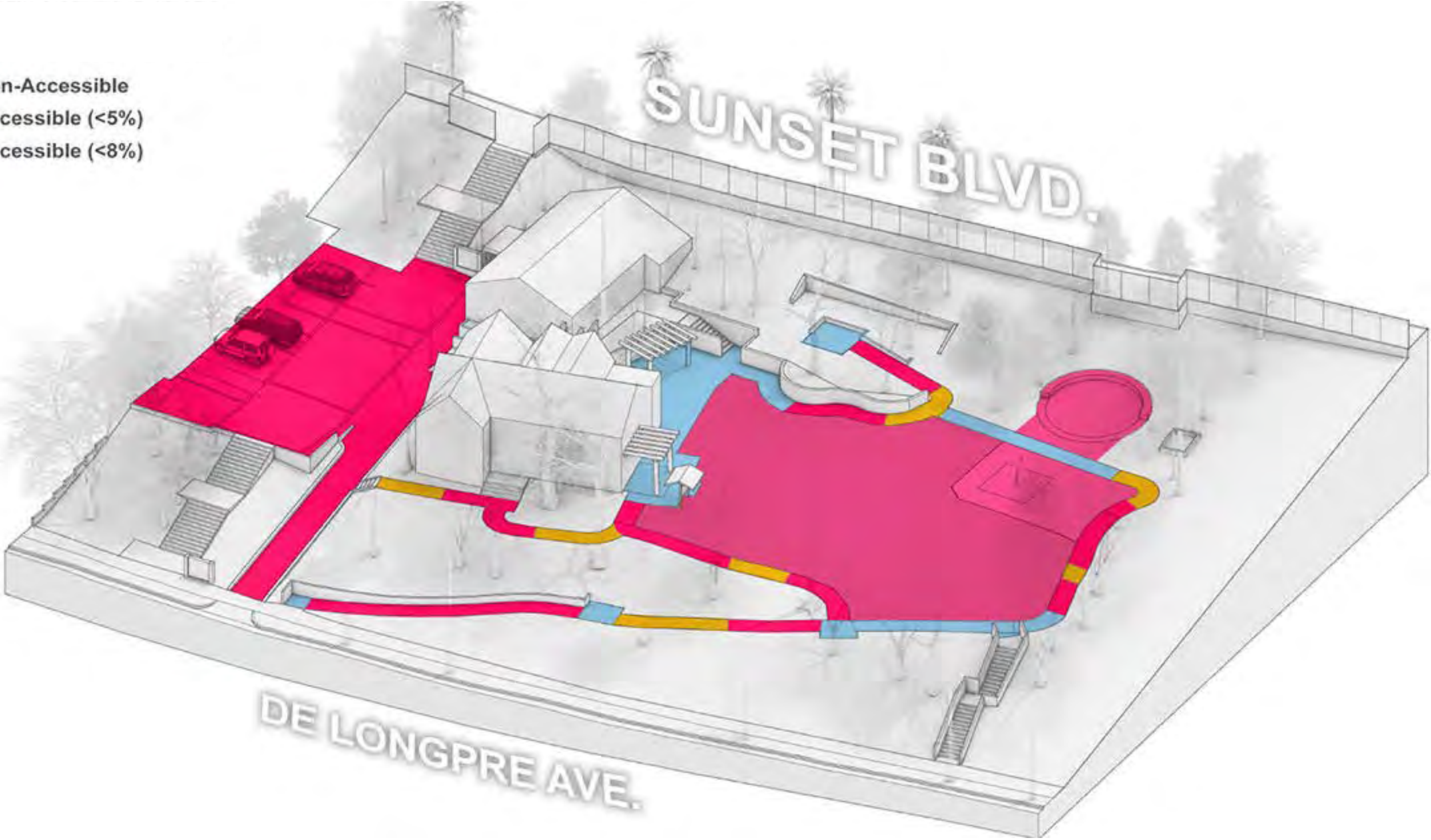
AIDS Memorial + Water Fountain

A **steep sloping condition and differential settlement limits access** for those with disabilities.

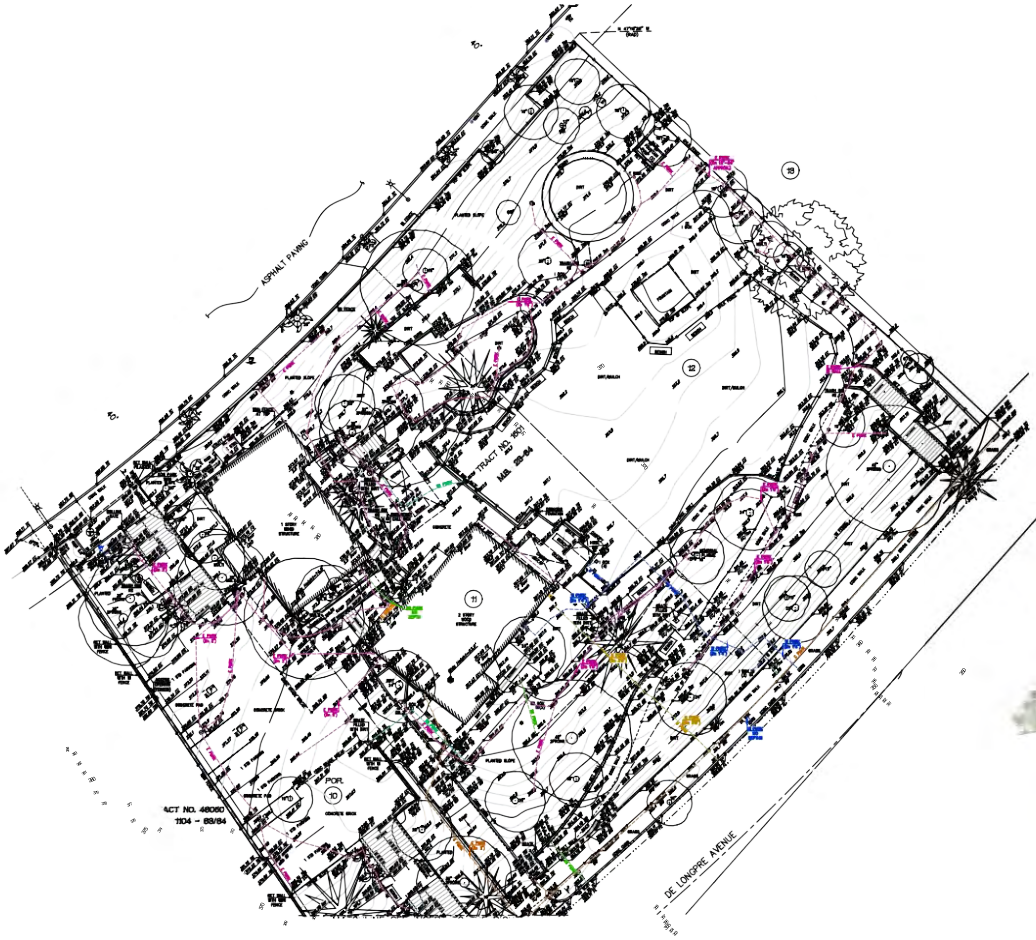
SITE CHALLENGES (Existing Conditions)

Slopes, Connectivity, and Accessibility

- Non-Accessible
- Accessible (<5%)
- Accessible (<8%)



This initial concept plan was developed in response to community input, and Commission and Advisory Board comments from 2020 to 2022 and was approved by the City Council in 2023.



Site Survey



DE LONGPRE AVE.

Site Plan

CONCEPT DESIGN (by MIG in 2021-22)- City Council-Approved

PHASED APPROACH- City Council-Approved



PHASE 1 (Current Work)

- Disability- related upgrades
- Off-leash dog play area reconfiguration
- Parking lot reconfiguration
- Other improvements related to the above, including security, lighting, and seating

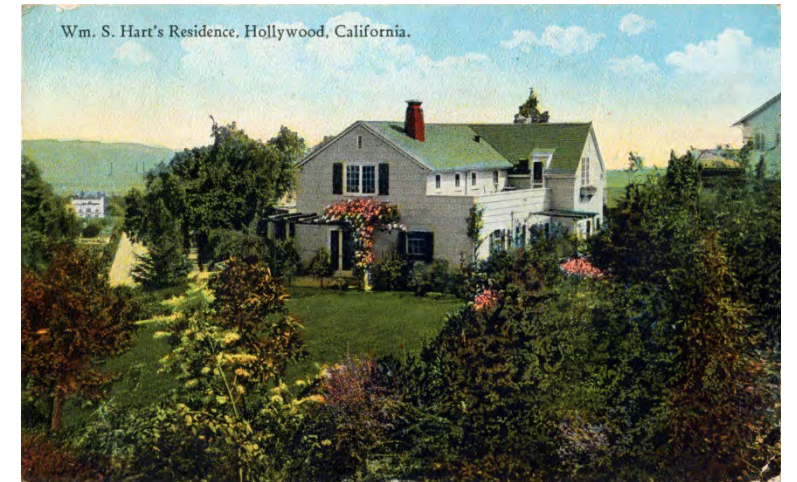


PHASE 2 (Future Work)

- Additional Park Enhancements Identified by the Community

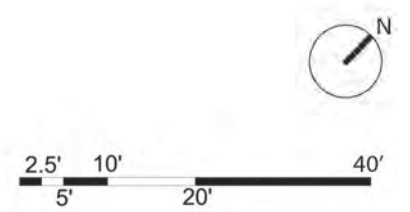
SUMMARY OF FEEDBACK:

- **City Council** (April 3, 2023)
 - Approval of design concept and plan.
- **City Council** (September 16, 2024)
 - Direction to consider “natural” alternatives to synthetic turf dog play area surfacing.
- **Public Facilities, Recreation, and Infrastructure Commission** (February 12, 2025)
 - Two plan variations presented- current proposal and one variation with a stair bifurcating dog areas. Generally more supportive of proposed plan due to the flexibility it offers. Supportive of **pathways/ routes** proposed and **water wall feature**. No strong preference for parking layout, though supportive of **keeping more existing trees** wherever possible. Supportive of **multi-functional plaza** as a place that can host a variety of uses for different user groups. Many public commenters preferred **not to split the off-leash area** into two separate large/ small areas.
- **Disabilities Advisory Board** (February 26, 2025)
 - Supportive of design approach and proposed accessibility improvements. Provided comments on the **need for thoughtful and accessible signage and seating, sufficient shade, handrails, and spaces for wheelchairs and walkers.**
- **Older Adults Advisory Board** (March 6, 2025)
 - General support for design approach, and **supportive of the small plaza as a place that can host various uses.** Comments about design of handrails, seating, and lighting. Noted concerns about steep driveway at DeLongpre.
- **Historic Preservation Commission** (May 12, 2025)
 - Receive and file of Director-approved Certificate of Appropriateness. Generally **supportive of improvements, upper plaza and dog play area reconfiguration, and proposed relationship of site setting to historic resource.**
- **City of Los Angeles** (May 12, 2025)
 - Provided comments and questions related to schematic design. Supportive of design, with detailed questions related to site utilities and product specifications for site elements such as lighting.



SITE PLAN- Proposed

OFF-LEASH DOG AREA	
BIG DOG AREA	4,730 SQ.FT.
SMALL DOG AREA	1,530 SQ.FT.
TOTAL	6,260 SQ.FT.
EXISTING DOG AREA	5,218 SQ.FT.



AERIAL VIEW - Proposed Upgrades



DELONGPRE ENTRY VIEW - Proposed Upgrades



REFERENCE IMAGES- Pathways

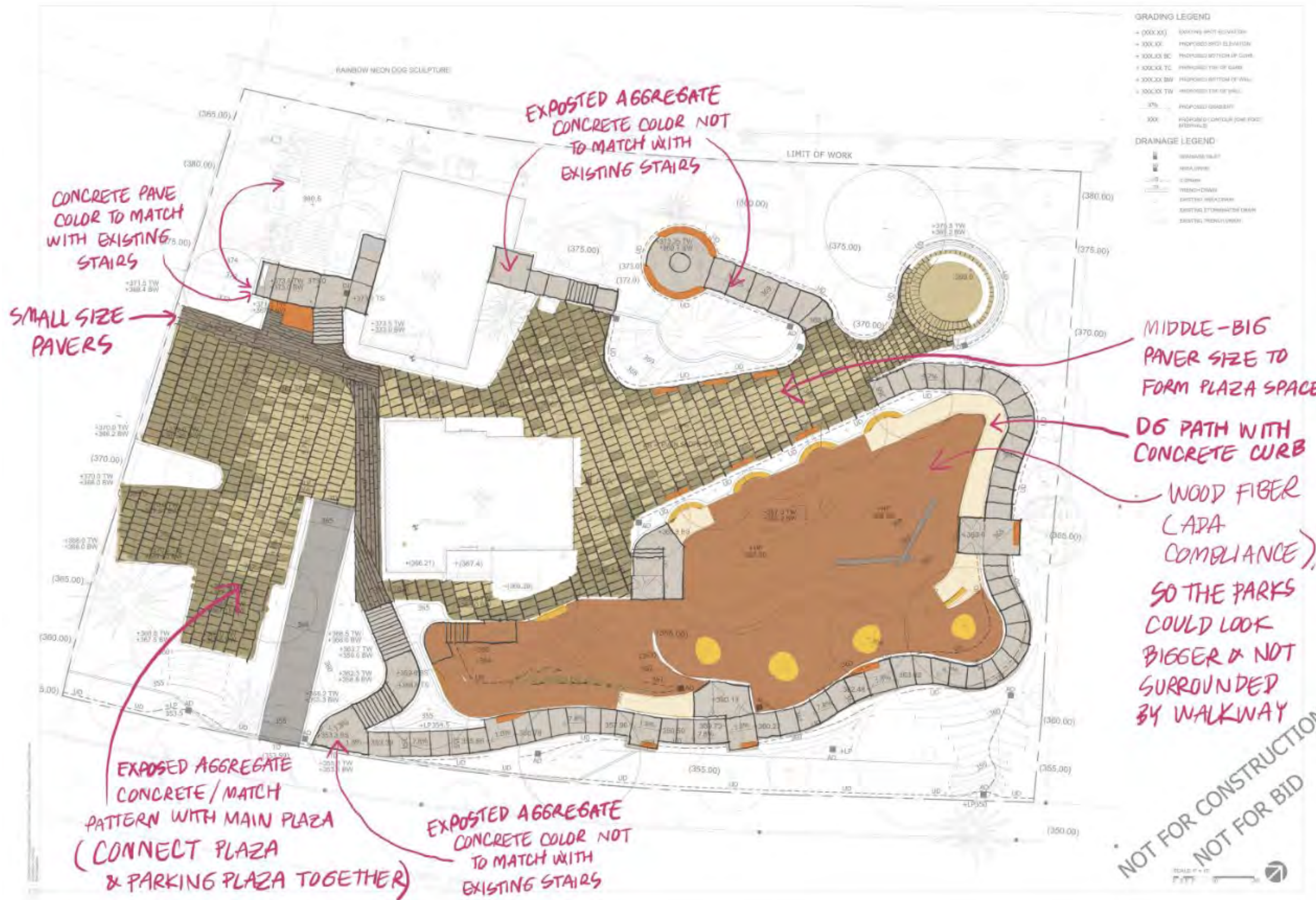
Layered, accessible, and connected



LARGE OFF-LEASH DOG PLAY AREA- Proposed Upgrades



MATERIALS- Proposed Upgrades



MEDIUM SIZE PAVERS (PLAZA- PARKING)



SMALL LINEAR PAVERS (PED CONNECTOR)



DECOMPOSED GRANITE (OR CONCRETE) (DOG PARK EDGE)



GRANITECRETE OR CONCRETE (DOG PARK EDGE)



ENGINEERED WOOD FIBER (EMF) CHIPS (DOG PARK PLAY AREA)



ENGINEERED WOOD FIBER (EMF) CHIPS (DOG PARK PLAY AREA)

MATERIALS STUDIED – Natural Alternatives to Synthetic Turf

Wood Chips



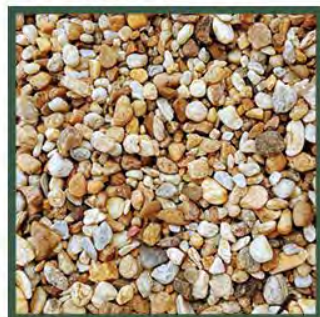
	Dog Safety + Sanitation	Accessibility	Maintenance	Site Impacts/ Drainage	Air Quality	Material Composition
Wood Chips	<p>Can injure paws, danger of ingestion, difficulty in identifying harmful objects and waste</p>	<p>Does not meet accessibility standards</p>	<p>Frequent augmentation and replacement with closures</p>	<p>Good drainage</p>	<p>Dust and air quality issues, issues with smell if not frequently replaced</p>	<p>Renewable, biodegradable, no PFAS</p>

Granitecrete



Granitecrete	<p>Good for pathways, waste identification; occasional cleaning for odor control</p>	<p>Meets accessibility standards (with stabilizer)</p>	<p>Low maintenance; occasional top dressing or recompaction may be required; edging recommended</p>	<p>Decent drainage (due to stabilizer for accessibility)</p>	<p>Low dust when stabilized and maintained</p>	<p>Environmentally friendly, no PFAS Natural and locally sourced; Non-toxic organic stabilizer (not petroleum-based)</p>
--------------	---	---	---	---	---	---

Pea Gravel



Pea Gravel	<p>Surface that is gentle on paws but can pose a risk of ingestion</p>	<p>Doesn't meet accessibility standards due to loose uneven surface</p>	<p>Requires raking to maintain even distribution and replenishment</p>	<p>Excellent drainage due to the porous nature of the material</p>	<p>Minimal dust, can become muddy if mixed with soil over time</p>	<p>Renewable and natural, no PFAS</p>
------------	---	--	---	---	---	--

Fibar*



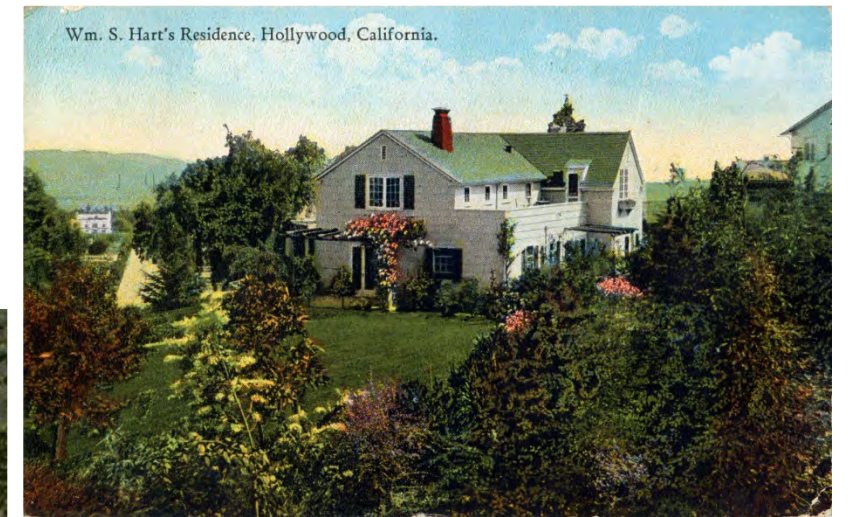
Fibar*	<p>Cushioned, no splinters, metal-free fibers; requires light rinsing to prevent odor</p>	<p>ADA approved, Level, solid, smooth surface and non-slip</p>	<p>Lightly rinse and rake to even surface as needed (2-4 times a month); top off/regrade every 1-2 years</p>	<p>Combination of natural site drainage and subdrains to prevent pooling, mud, and erosion</p>	<p>Low dust with proper maintenance</p>	<p>Renewable, biodegradable, no PFAS</p>
--------	--	---	---	---	--	---

*Engineered Wood Fiber

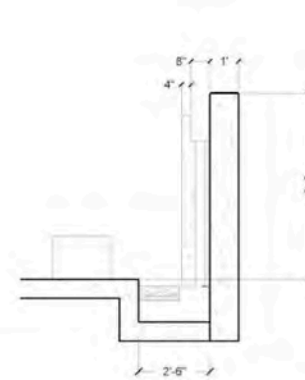
AIDS Memorial and Water Feature



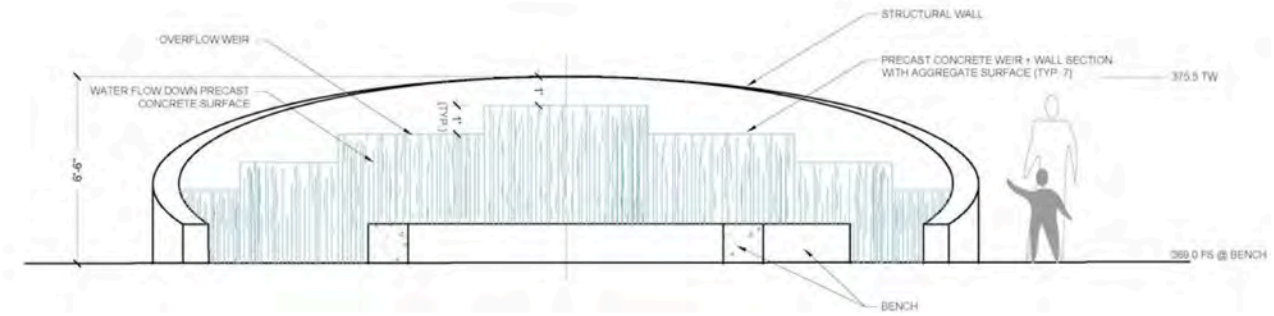
VIEW OF HART HOUSE - Proposed Upgrades



WATER FEATURE CONCEPT



WATERWALL SECTION (TYP.) scale: 3/8" = 1'-0" | 3



WATERWALL ELEVATION scale: 3/8" = 1'-0" | 2

DESCRIPTION OF WATER FEATURE

THE WATER FEATURE CONSISTS OF A SEMI-CIRCULAR WALL OF WATER, ILLUMINATED AT NIGHT BY SUBMERSIBLE WHITE LED LIGHT FIXTURES. THE WATER WALL IS COMPOSED OF SEVEN PRECAST CONCRETE SECTIONS THAT FORM BOTH THE UPPER WEIR, WHERE WATER IS INTRODUCED, AND THE VERTICAL WALL DOWN WHICH THE WATER RUNS. THE PRECAST SECTIONS ARE TO BE INSTALLED AND SEALED AGAINST THE STRUCTURAL RETAINING WALL.

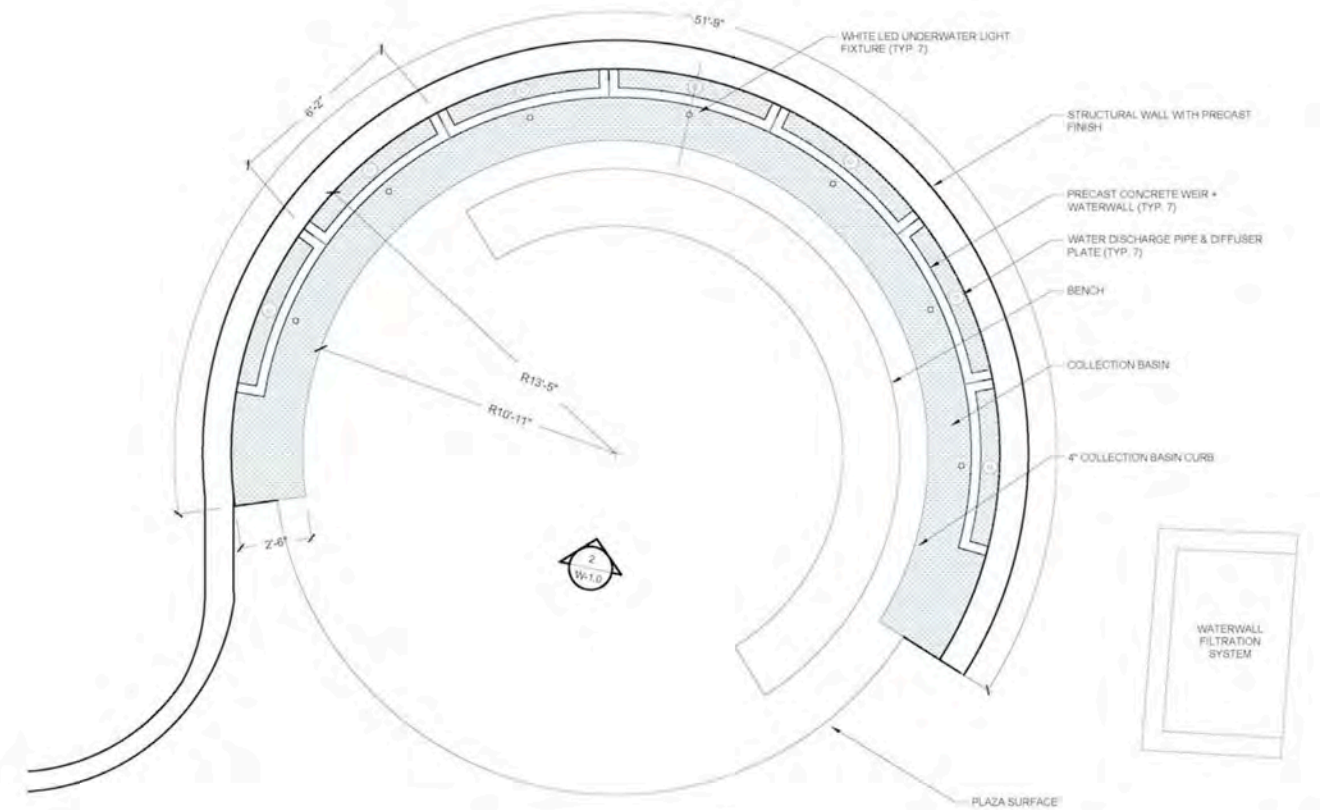
THE SURFACE OF THE CONCRETE PANELS IS INTENDED TO BE A WATERPROOF AGGREGATE SURFACE (THE EXACT FINISH IS TO BE DETERMINED, AND SHALL BE TESTED DURING A MOCKUP OF ONE OF THE PANELS). THE INTENDED WATER EFFECT SHALL NOT PRODUCE MORE THAN 24" OF SPLASH ZONE AT THE BOTTOM OF THE WALL IN THE COLLECTION BASIN.

THE SEVEN WEIRS ARE FED BY SUBMERSIBLE PUMPS LOCATED BELOW GRATING OR STONE PAVERS IN THE COLLECTION BASIN. THE WATER IS FILTERED AND CHEMICALLY TREATED BY A FILTRATION PUMP AND SYSTEM LOCATED ON THE EXISTING FOUNTAIN EQUIPMENT PAD.

UTILITY REQUIREMENTS

GENERAL CONTRACTOR SHALL PROVIDE THE FOLLOWING UTILITY CONNECTIONS:

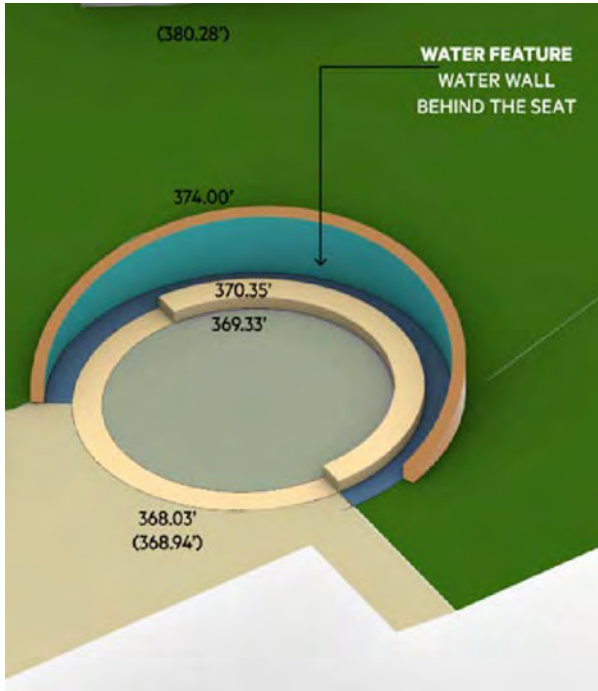
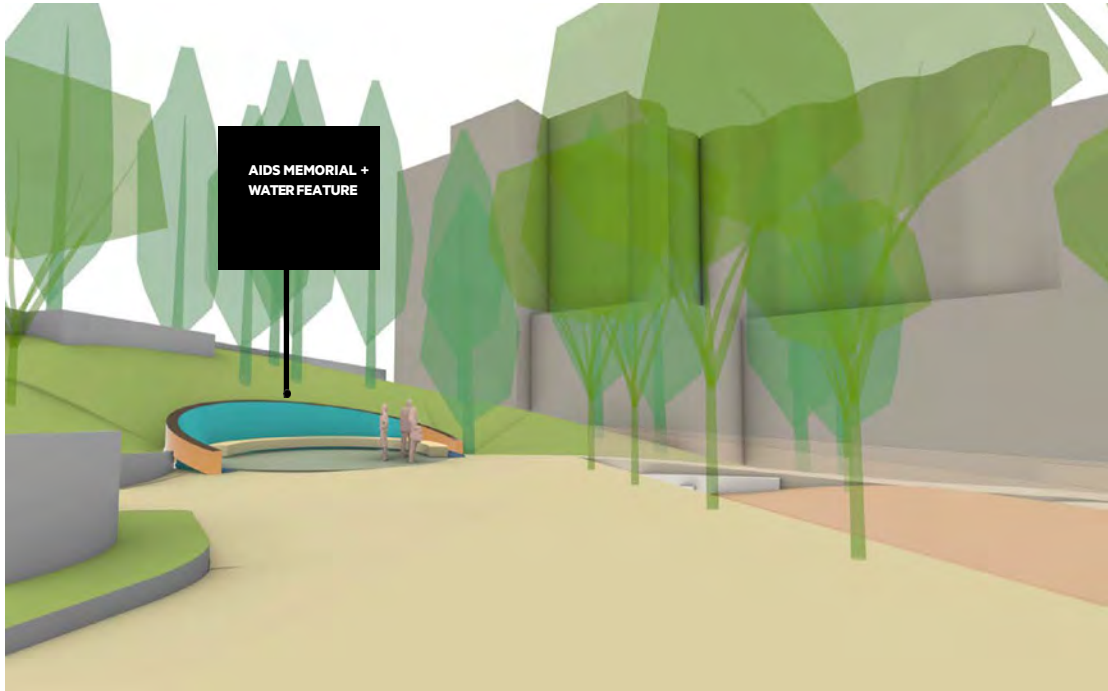
- WATER SUPPLY:** 3/4-INCH DOMESTIC COLD WATER SUPPLY LINE TO THE FILTRATION EQUIPMENT SPACE (REGULATED AT 50 PSI) FROM AN APPROVED REDUCED-PRESSURE PRINCIPLE BACKFLOW PREVENTER. INCOMING WATER SUPPLY LINE SHALL BE TYPE L COPPER TUBE.
- SEWER:** MINIMUM 3-INCH GRAVITY DRAIN CONNECTION TO SANITARY SEWER. SEWER CONNECTIONS SHALL HAVE AN AIR GAP, P-TRAP, BACKWATER VALVE, AND BE VENTED PER LOCAL CODES.
- POWER-PUMPS:** 120/240VAC, 60 AMP, 2-WIRE + GROUND, SINGLE-PHASE CIRCUIT TO THE WATER FEATURE EQUIPMENT SPACE. (PUMPS SHALL HAVE A DISCONNECT SWITCH.)
- POWER-UTILITY OUTLET:** SEPARATE 120VAC, 15 AMP, 2-WIRE + GROUND, SINGLE-PHASE CIRCUIT TO THE EQUIPMENT SPACE FOR UTILITY ELECTRICAL OUTLET.
- COORDINATION:** GENERAL CONTRACTOR SHALL COORDINATE POINTS OF CONNECTION FOR WATER SUPPLY, SANITARY SEWER, AND POWER WITH BASE BUILDING UTILITIES AND BRING UTILITIES TO EQUIPMENT SPACE AND BASIN AS NOTED ABOVE. WATER FEATURE CONTRACTOR SHALL COMPLETE REMAINING CONNECTIONS WITHIN THE EQUIPMENT SPACE AND BETWEEN THE EQUIPMENT SPACE AND BASIN, PER THE CONSTRUCTION DRAWINGS.



WATERWALL PLAN scale: 3/8" = 1'-0" | 1

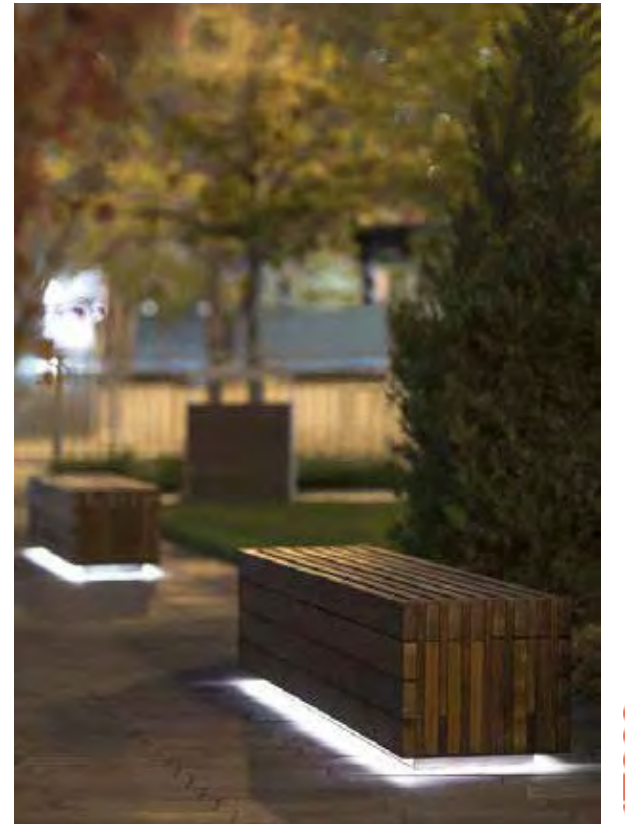
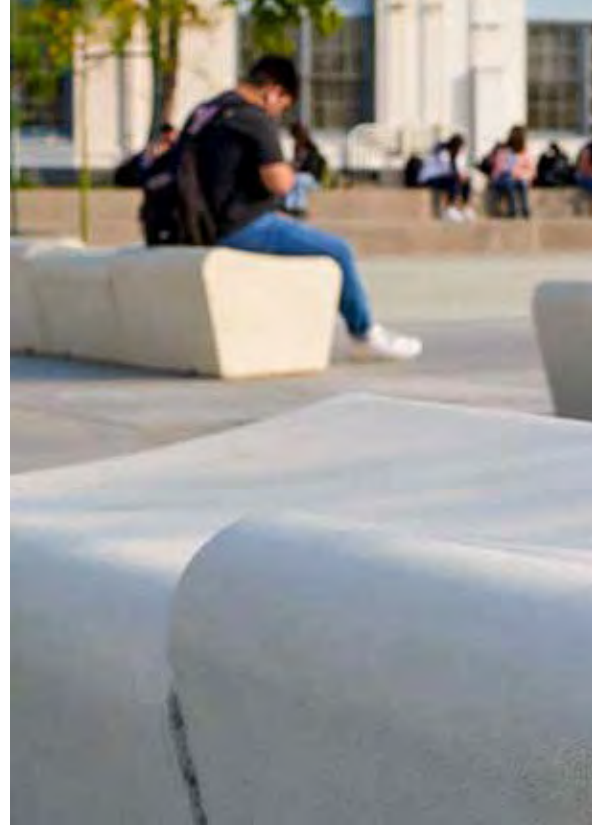
REFERENCE IMAGES- AIDS Memorial and Water Feature

Interactive, calming, an area of respite and reflection



REFERENCE IMAGES- Types of Seating

Bench arrangements, planting, and accommodating various users



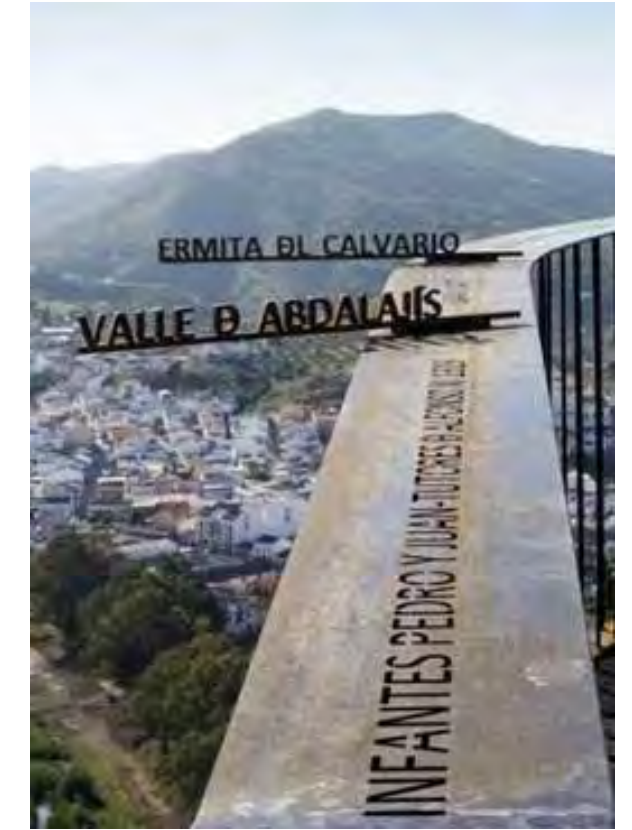
REFERENCE IMAGES- Security and Lighting

Integrated and interactive



REFERENCE IMAGES- Integrated and Inclusive Signage and Wayfinding

Informative, measured, and integrated into pathways



REFERENCE IMAGES- Sensory Aspects

Seasonal interest, sensorial, and textured



NEXT STEPS:

- The updated design, off-leash play area materials, and recommendations from Boards and Commissions and the Ad-Hoc Subcommittee will be presented to City Council in the summer of 2025 .
- Construction documents will likely be complete near the end of 2025 and ready for bidding for construction in mid-2026.

