

**Side Patio**

- Private exterior pocket off of main living space.
- Celebrate front entry while remaining private
- Porous site entry fence allow transparency and separation

**Windows**

- Curated placement for optimal privacy, light, and cross ventilation.
- Properly sized for budget.

**Materials**

- Renewable and economical materials that allow flexibility by each user.



**Key**

- 01 Entry Site Fence
- 02 Motorized Awning @ Living  
4'-0" x 4'-0"
- 03 Casement Window @ Bedroom  
3'-0" x 6'-0"
- 04 Fiber Cement Siding
- 05 Stucco Base
- 06 Porous Paver



**Front Elevation (South)**  
Exterior Development

**Key**

- 01 Entry Site Fence
- 02 Trash Enclosure
- 03 Fixed Picture Window @ Living  
6'-0" x 6'-0"
- 04 Entry Door + Screen with Exterior Light  
3'-0" x 8'-0"
- 05 Metal Brim Overhang
- 06 Fiber Cement Siding
- 07 Stucco Base
- 08 Porous Paver @ Side Patio



**Side Entry Elevation (South)**  
Exterior Development

**Key**

- 01 Casement Window @ Kitchen  
3'-0" x 5'-0"
- 02 Casement Window @ Desk  
3'-0" x 5'-0"
- 03 Fiber Cement Siding
- 04 Stucco Base
- 05 Porous Ground (DG)



**Key**

- 01 Side Door with Exterior Light
- 02 Awning Window @ Bathroom  
3'-0" x 3'-0"
- 03 Casement Window @ Bedroom  
3'-0" x 4'-0"
- 04 Metal Brim Overhang
- 05 Fiber Cement Siding
- 06 Stucco Base
- 07 Porous Ground (DG)

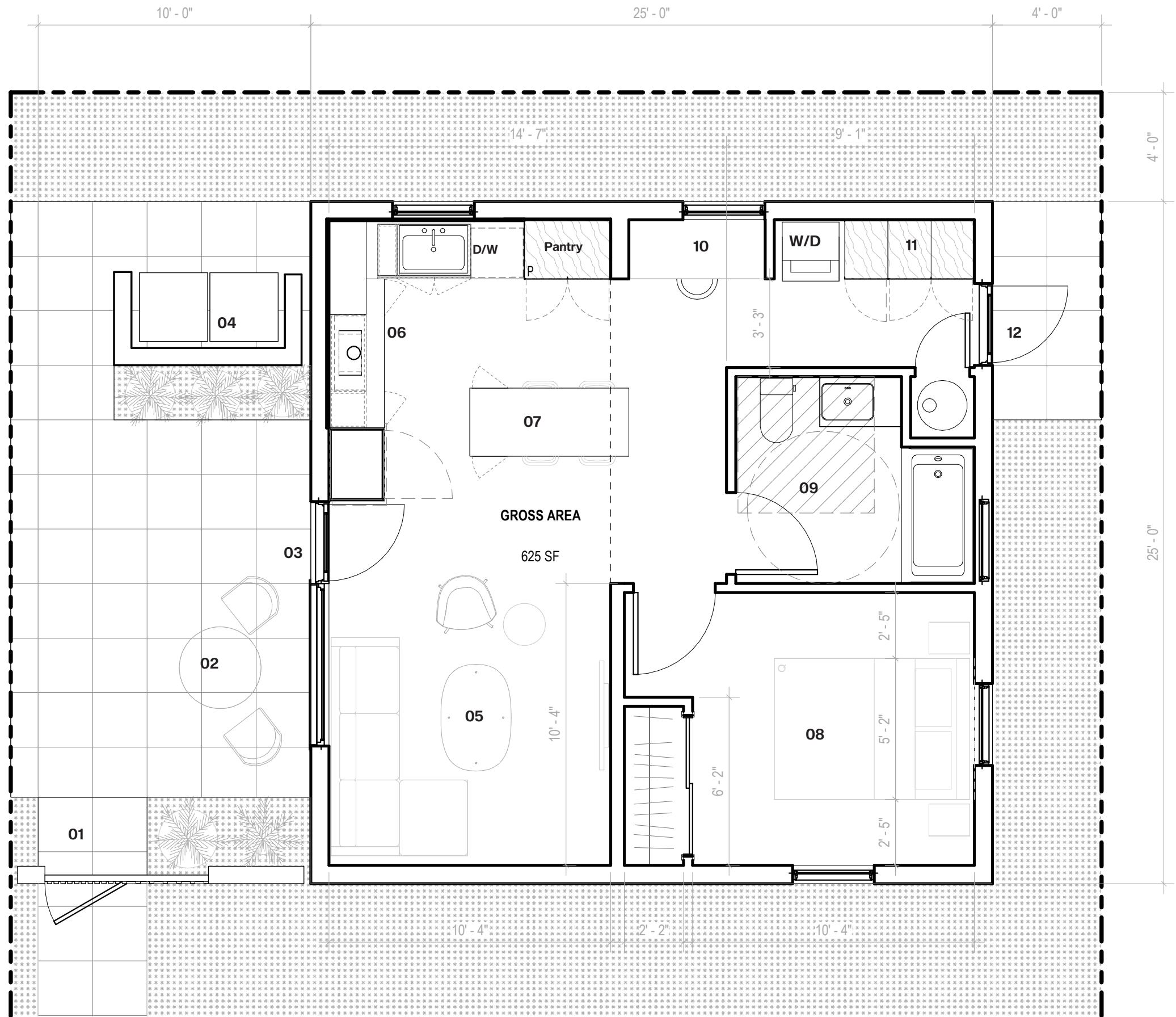


**Key**

- 01 Site Entry Fence
- 02 Private Patio
- 03 Main ADU Entrance
- 04 Trash + Outdoor Storage
- 05 Living  
Soft seating with pull-out sofa  
Storage with display casework
- 06 Kitchen  
Refrigerator  
Oven/Stove  
Sink  
Dishwasher  
Pantry  
Lower + Upper Storage
- 07 Kitchen Island + Seating  
Storage  
4-Stool Eating Area
- 08 Bedroom  
Queen bed + side tables  
Closet
- 09 Bathroom  
Accessible accommodations
- 10 Workspace
- 11 Laundry / Utility Storage
- 12 Side Entry

**Total Area**

Gross SF (includes exterior walls): 625 sf



**Siding Option 01**  
**Fiber Cement Panel + Battens**  
Hardie® Panel Vertical Siding with  
Hardie® Trim Boards Batten Strips



**Siding Option 02**  
**Fiber Cement Panel + Wood Battens**  
Hardie® Panel with  
Wood Nailers, Painted to match Panel



**Roof**  
**Recycled Asphalt Shingle**



**Siding Base**  
**Stucco**



**Permeable Pavers**  
**Natural Stone**



**Porous Pavement**  
**Decomposed Granite**



**Key**

- 01 Front Entry Door
- 02 Picture Window
- 03 Refrigerator
- 04 Kitchen Island / Dining
- 05 Skylight @ Wood Feature Ceiling



Key

- 01 Motorized Awning Window
- 02 Picture Window
- 03 Entry Door
- 04 Refrigerator
- 05 Kitchen Island / Dining
- 06 Electric Oven + Range
- 07 Ceramic Wall Tile
- 08 Upper Cabinets + Open Shelving
- 09 Casement Window @ Sink
- 10 Fixed Skylight @ Wood Feature Ceiling
- 11 Cork Flooring
- 12 Potential Ceiling Fan Location



Living + Dining Space  
Interior Development

**Plywood Feature Ceiling**



**Painted Wood Cabinet / Millwork @  
Kitchen, Bathroom, + Storage**



**Recycled Ceramic Wall Tile @  
Kitchen + Bathroom**



**Linoleum Countertops @  
Kitchen**



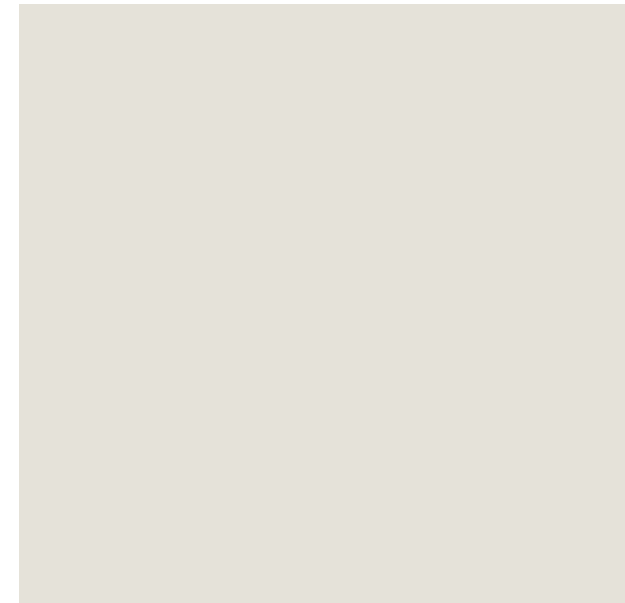
**Wood Cork Flooring  
Throughout**



**Marmoleum Flooring @  
Bathroom**



**Low VOC Paint @  
Gypsum Walls + Ceiling**



**Key**

- 01 Motorized Awning Window
- 02 Fixed Skylight @ Wood Feature Ceiling
- 03 Casement Window @ Sink
- 04 Kitchen Island / Dining
- 05 Lower Cabinets + Dishwasher
- 06 Full height Pantry
- 07 Work Station / Desk
- 08 Full height Storage with W+D
- 09 Side Entry/Exit
- 10 Bathroom Door
- 11 Cork Flooring
- 12 Potential Ceiling Fan Location

Living + kitchen rely on the chimney effect (vaccum created when cool air enters a lower window + exits through a higher window).



**Key**

- 01 Fixed Skylight @ Wood Feature Ceiling
- 02 Ceramic Tile Backsplash
- 03 Casement Window @ Sink
- 04 Lower Cabinets + Dishwasher
- 05 Full height Pantry
- 06 Casement Window @ Work Station / Desk
- 07 Full height Storage with W+D
- 08 Side Entry/Exit
- 09 Painted Gypsum Soffit
- 10 Cork Flooring

