

Welcome

City of West Hollywood Beverly Triangle Plaza

COMMUNITY MEETING

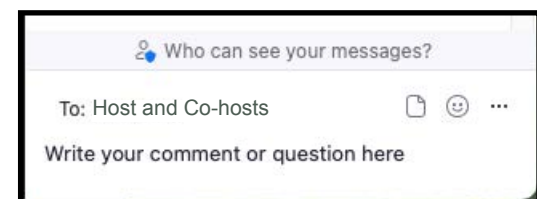
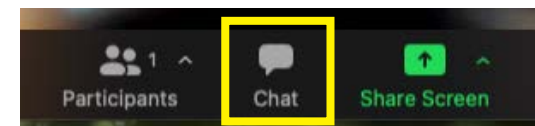
Questions to consider:

1. What are some community events that you can envision or would like to see at the plaza?
2. What are the qualities that would make you consider meeting friends for coffee or lunch at the plaza?
3. Is there something that would make it more inviting for you?
4. Do you feel there is enough variety of seating to encourage different size groups?
5. Are there other aspects of the Design District you'd like to see expressed?
6. Are there other amenities (ie. bike related, dog related) that you'd like to see?

We'll come back to these at the end of the presentation

Instructions for Questions:

1. Please submit comments or questions at anytime using the 'chat' function on zoom. See image.
2. Questions and comments will be read during the Q & A / Discussion period after the presentation.
3. If unable to use the zoom chat function (or if you are on the phone) there will be time for you to comment at the end.
4. If you would like to follow up later, contact David Fenn, DFenn@weho.org (323) 848-6336



City of West Hollywood Beverly Triangle Plaza

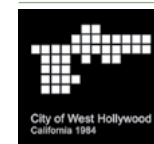
COMMUNITY MEETING

August 09, 2021

Agenda

1. Introduction / Meeting format overview
2. Concept Presentation
3. Q & A / Discussion
4. Review of Next Steps

Please submit comments
and questions in the chat!



greenmeme
LAND IMAGES
LANDSCAPE ARCHITECTURE



The Site

2014 Workshop 10% Concept Plan



BEVERLY BOULEVARD GATHERING PLACE

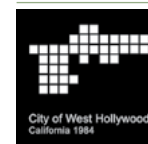
Site is currently a 5,000 sf parking lot on the NE corner of Robertson Bl. and Beverly Bl.

Program notes per the 2014 MP and community workshops:

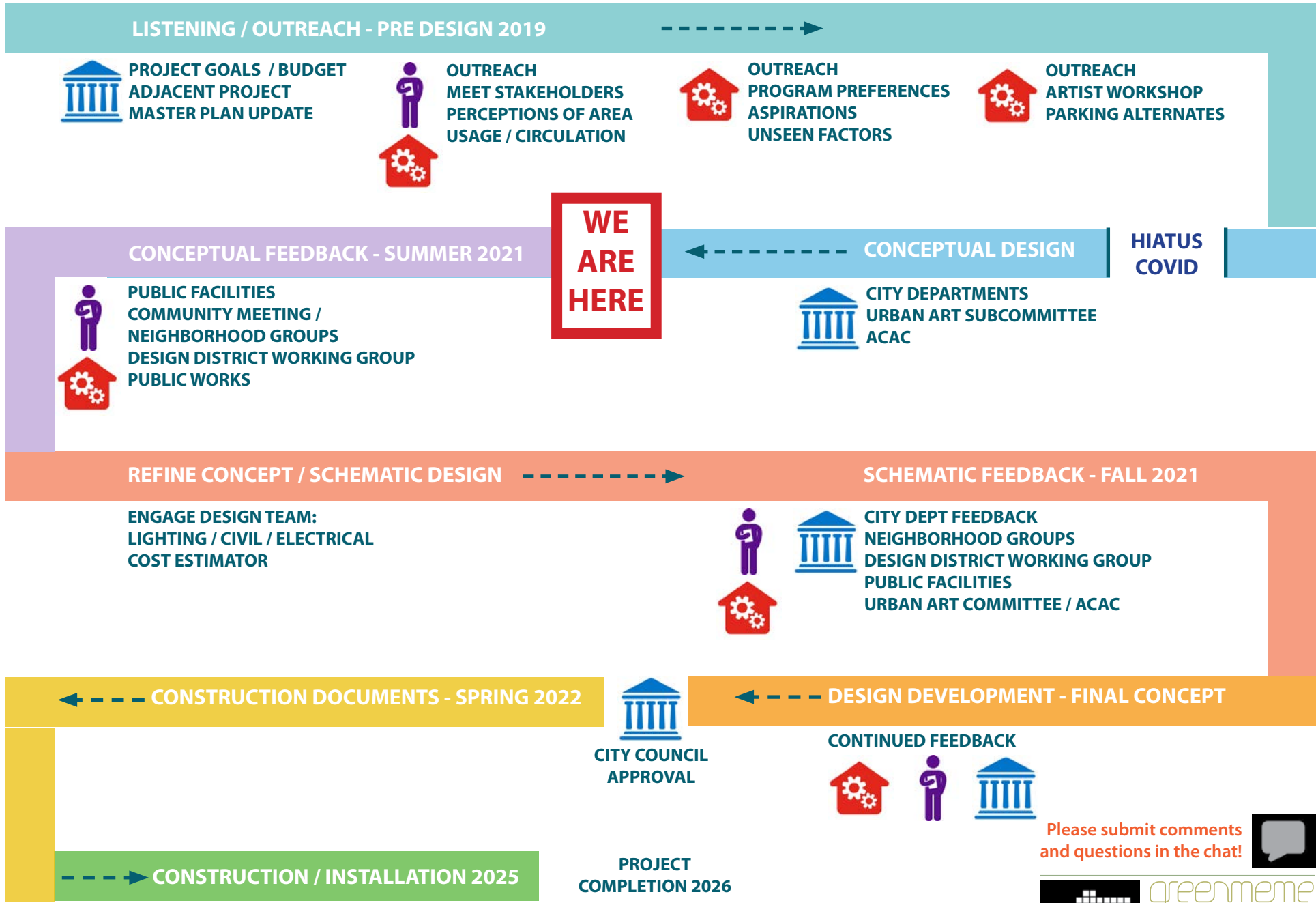
- Public art to reinforce District identity
- Maintain visibility and access for businesses
- Need to buffer traffic and noise
- Movable tables/chairs near Coffee Bean
- Shade trees, landscaping and permeable surfaces
- Activate space on the east side
- Bike amenities, including repair station
- Creative lighting



Please submit comments and questions in the chat!



Timeline



Please submit comments and questions in the chat!



Concept Feedback so far....

URBAN ART SUBCOMMITTEE (UAS)

Would like the artwork to be larger

Less contrast between paving and sculpture

More green / planting areas

ARTS AND CULTURAL AFFAIRS COMMISSION (ACAC)

Approval with flexibility to address community concerns

COMMUNITY (AT ACAC MEETING)

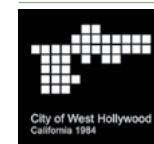
Many neighbors expressed concerns about safety and felt the semi-enclosed nature of the sculpture could create hidden areas that would allow for unwanted activity: drug use, criminal activity, places for the unhoused to camp or sleep

Need for clear visibility, no potential hiding places for safety, preserve business presence

Great oasis in busy urban environment

Concerns about resilience of materials, maintenance and budget

Please submit comments
and questions in the chat!



West Hollywood Homeless Initiative

HOMELESS CONCERN LINE: (323) 848-6590

Leave a detailed voicemail to request homeless outreach services.

FUTURE RESOURCES:

'A Place to Go' - Service center in WeHo

More regional help and housing through LA County Homeless Initiative
<https://homeless.lacounty.gov/>

STAY UP TO DATE:

www.weho.org/homeless

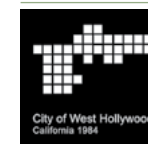
@WehoCares on FB, Twitter

ATTEND TOWN HALL:

On West Hollywood Homeless Initiative to be scheduled in September or October



Please submit comments and questions in the chat!



greenmeme
LAND IMAGES
LANDSCAPE ARCHITECTURE

Outreach

Several outreach events were held in late 2019/ early 2020.

Results are documented in Engagement Results booklet which is available at

<https://www.weho.org/home/showpublisheddocument/49076/637479510575570000>



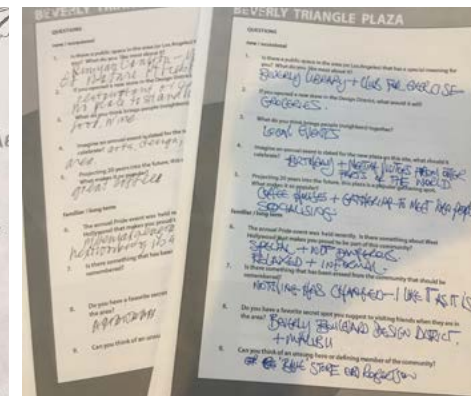
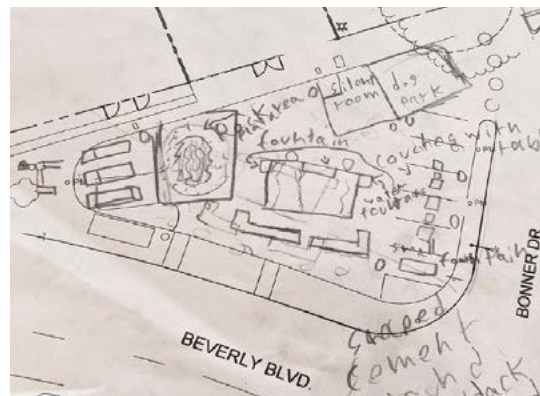
POP-UP ON-SITE SURVEYS



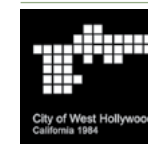
FULL SITE ENGAGEMENT



ROSEWOOD SCHOOL



Please submit comments and questions in the chat!



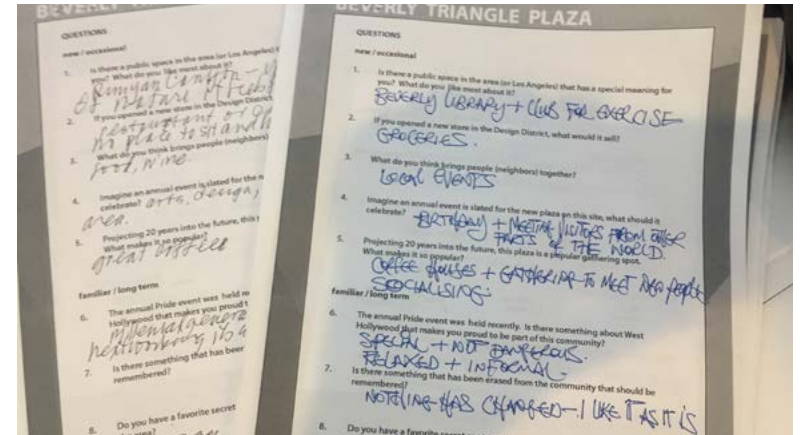
greenmeme
LAND IMAGES
LANDSCAPE ARCHITECTURE

Engagement 1 / 2 / 3 Community Survey Mapping

Engage 1 Event held Saturday / Sunday Pride weekend June 8-9, 2019

Preliminary surveys and mapping
Gathered 150 surveys

Engagement 2 Event held August 3 and 8th
Gathered 75 surveys



BEVERLY TRIANGLE PLAZA

We are Landscape Architects working with the City of West Hollywood to implement part of the Design District Master Plan, a vibrant new place at the existing (Hollywood) parking lot at Beverly and Wilshire. We are conducting outreach to better understand the site and surrounding area. We are also gathering contact information for an upcoming series of public engagement workshops. Your input is welcome and appreciated.

How do you get here? (check all that apply)

Drive Public transit Ride share Bike/scooter Walk Other

What brings you here?

Are there a few words that best describe this area?

What are some challenges you face in this area?

Is something missing from the area?

SEND Work in Visit Program

Resident LAND USER Neighbor

If you would like receive updates and/or invitations to participate in design workshops for the plaza, please add your email below:

Email: _____
 Name (Optional): _____

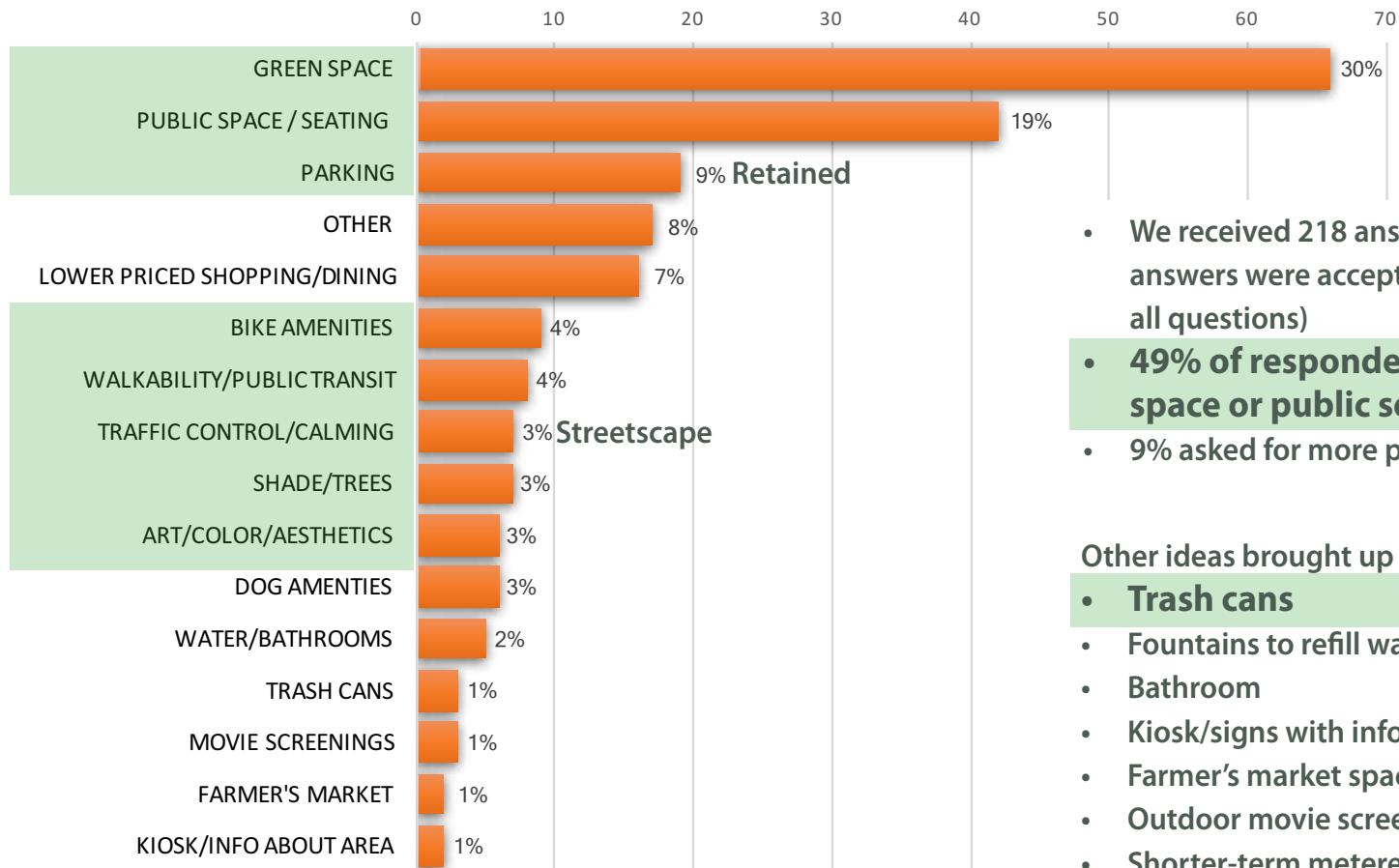
* All information will be kept confidential

Please submit comments and questions in the chat!



What we heard....

WHAT IS THE AREA MISSING?

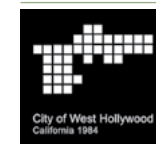


- We received 218 answers to this question (multiple answers were accepted, not all respondents answered all questions)
- **49% of respondents requested more green space or public seating areas**
- 9% asked for more parking

Other ideas brought up by the survey respondents:

- **Trash cans**
- Fountains to refill water bottles
- Bathroom
- Kiosk/signs with information about the area
- Farmer's market space
- Outdoor movie screenings
- Shorter-term metered parking
- **Topography to block traffic**
- Adult swings
- Dog-friendly area

Please submit comments and questions in the chat!



Engagement 4 - Closed Site Event Saturday December 7, 2019

Activities:

Artist-led workshop

Survey result update

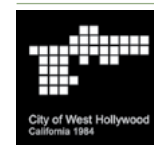
Parking / Circulation layout Options

City Representative Unhoused neighbors

Activity - Seating comfort



Please submit comments
and questions in the chat!



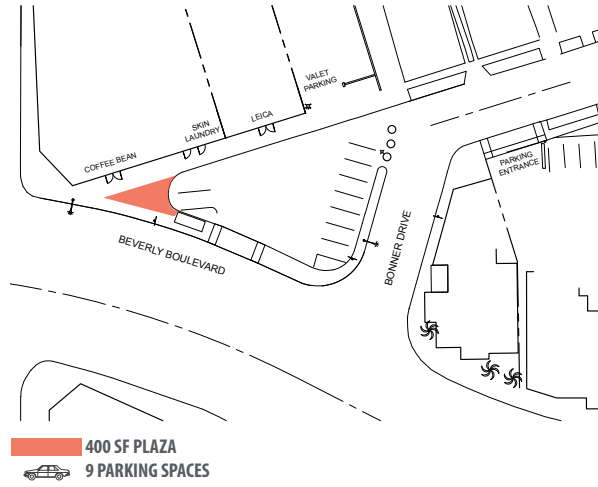
greenmeme
LAND IMAGES
LANDSCAPE ARCHITECTURE

Circulation Study

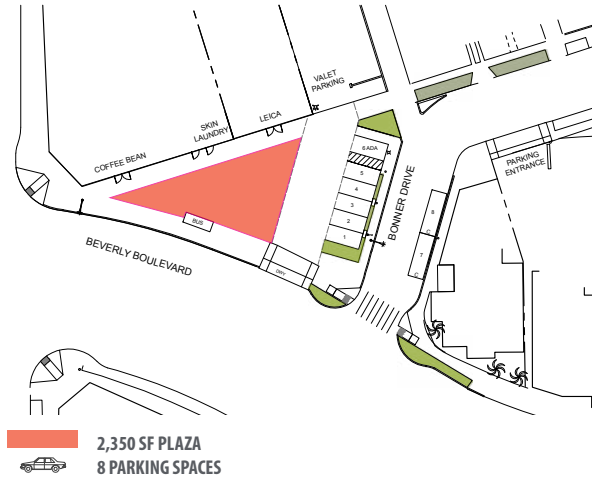
Given four options, stakeholders were asked to select their preferred parking and circulation configuration.

EXISTING - REFERENCE

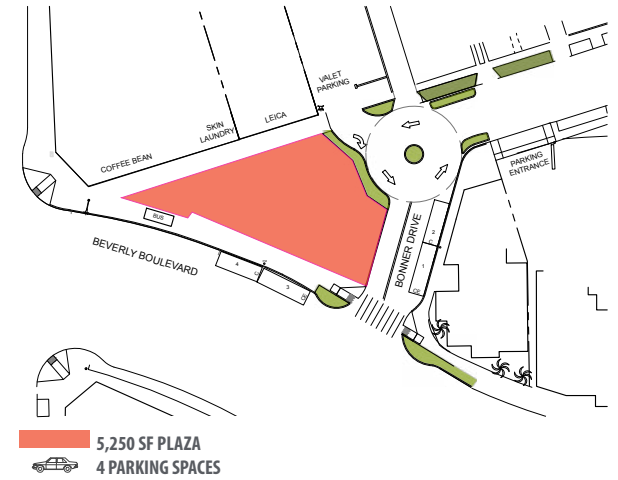
Vehicle access to site parking and valet from Beverly Blvd.



OPTION A From 2014 Workshop



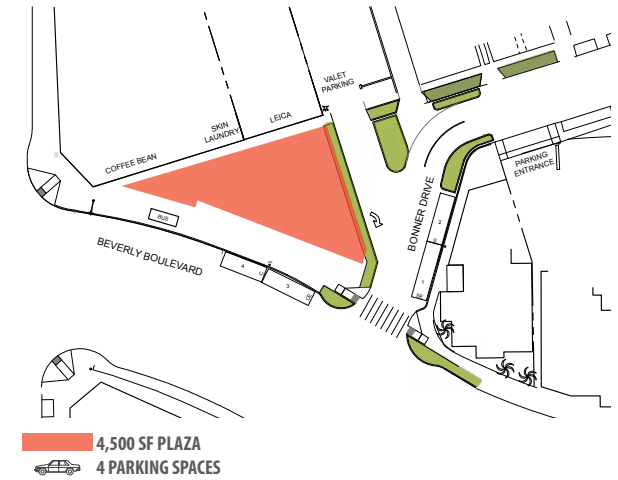
OPTION C Roundabout



OPTION B Bonner Parallel Parking



OPTION D Bonner Fork



Please submit comments and questions in the chat!

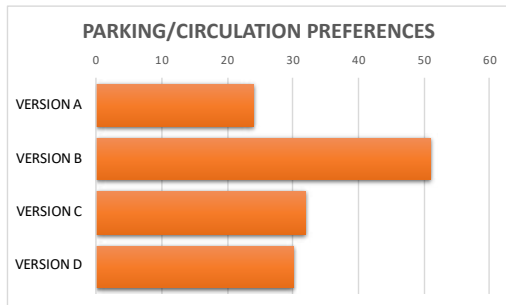
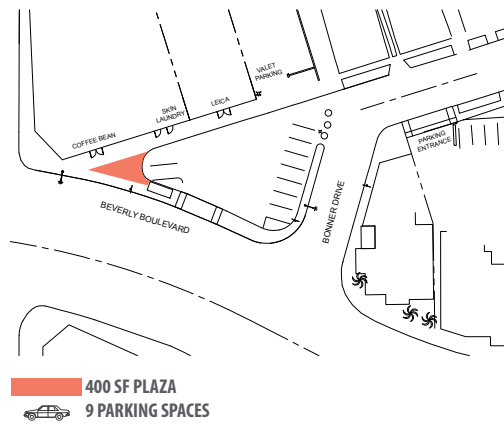


Circulation Study Results

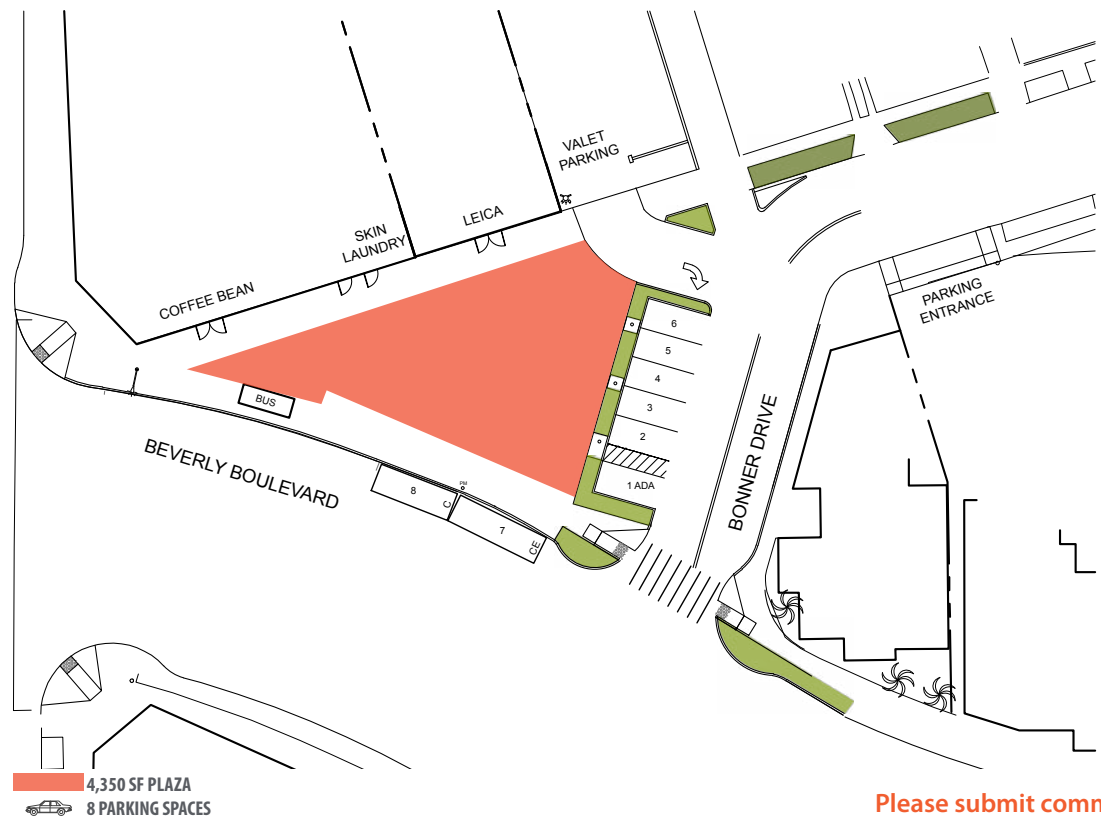
Option B was the overwhelming favorite, in part because it adds 3950 square feet of plaza while only losing one parking space

EXISTING - REFERENCE

Vehicle access to site parking and valet from Beverly Blvd.



OPTION B (Preferred Option)



Please submit comments and questions in the chat!



Artist-Led 'Game'

Artist-Led Workshop

Artist team, Greenmeme was part of all the outreach, especially the hands on site design 'game'

Players drew cards to determine the order and a Point of View of from which to approach to the site.

The role-playing element of the game encouraged people to be more imaginative with their ideas for the future plaza.

Zone Cards

01  The Gardener The Gardener creates space for plants and habitat for wildlife. Place the green objects (or draw your own) with the green marker where you garden areas should be.	05  The Traveller The Traveller likes to take journeys and make paths. With the red marker draw paths across the site, connecting the zones of other players.	02  The Contemplator The Contemplator likes to take a break, enjoy the weather and ponder life. Both alone and with friends. Using the blue marker, draw a place for an outdoor living room.	04  The Guardian The Guardian is a protector of people, making a place safe. Create spaces for bringing people together. Use the orange marker to draw areas that need protection.	06  The Astronomer You like to look up at the sky. Using the black marker, draw the areas that provide views that should be protected or obscured.	03  The Performer You like to provide a spectacle for others. Whether playing music or dancing the day away, the performer likes spaces to entertain. With the pink marker draw a performance space.
---	---	--	--	--	--

Activity Cards

Seating Choose items from the seating assets and place on site. 	Shade Beat the heat! Add shade structures to the board. 	Activity What would you do here and where? Add activities to the park. You may draw or select a pre-made activity card. 	Nature Pull assets from the Nature Box and arrange them in the plaza. 	Magic Add some magical elements to the plaza. You may draw or choose from any asset in the Magic Box. 	Change Change something or everything on the board. Be ready to tell team about your decision. 
--	--	--	--	--	---



Please submit comments and questions in the chat!



Artist-Led 'Game'



Please submit comments and questions in the chat!



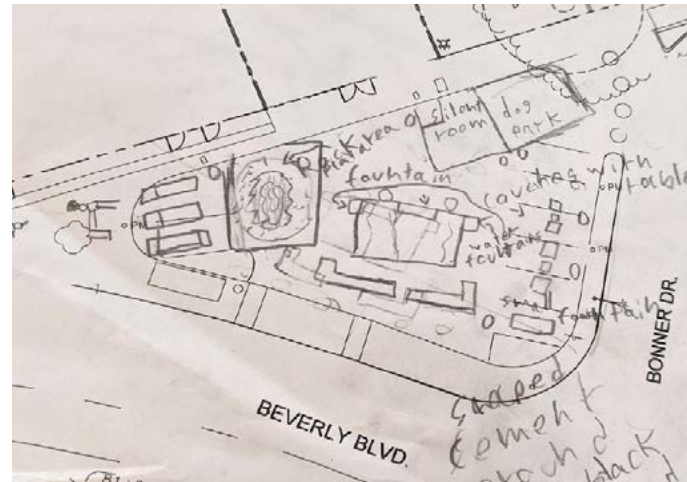
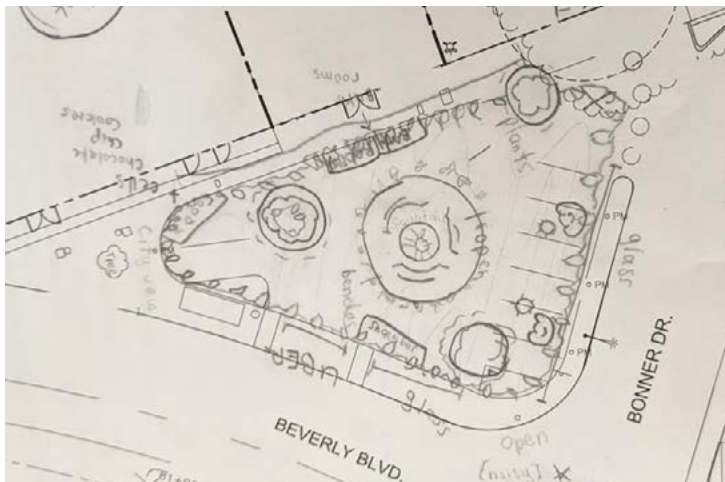
greenmeme
LAND IMAGES
LANDSCAPE ARCHITECTURE

Engagement - Rosewood Elementary School

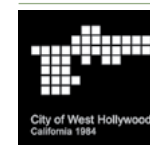
The City and design team introduced the site and 'Game' to 4th and 5th grade students at Rosewood Elementary School - an urban planning focused magnet school.

Students were encouraged to use their senses and experience the site from the character point of view. Their teachers followed up with lesson plans and each student produced a site plan.

Our hope is that students feel a connection to the plaza after participating in early design studies.



Please submit comments and questions in the chat!



Game Results

A number of participants' designs and contributions were fantastical and unconstrained, whereas others took a very real and practical approach.

We found similar results and patterns across multiple rounds of the game.

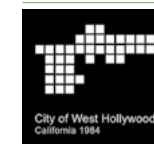
In every round, participants constructed landscape buffers or berms around the perimeter of the plaza to protect it from traffic. Also in every game, the center of the plaza became a focal point with "gardens," "seating," "shade," and often "art/magic". Two of the teams included raised platforms, as viewing spaces.

All games had dense seating and shade next to the Coffee Bean with additional seating located at the NE corner. In general participants only cited passive activities. Performance and events were not strongly supported but some low volume activities were encouraged.

Additional Feedback / Ideas

- **Buffers from traffic**
- **Berms along Beverly Blvd.**
- **Planters and buffers along Bonner Dr.**
- **Vegetation**
- **Shade**
- **Seating**
- Raised walkways
- **Art in center**
- **Gathering focused around the Coffee Bean and the NE corner near the big tree**
- As the game was "fantasy", parking was not considered
- A glass bridge that acted as a buffer
- **Center of the plaza was a focal point in all games**
- Acoustic performances facing towards Coffee Bean
- Move noisier activities to the Design Center
- No amplified music, etc
- Passive recreation encouraged
- Permeable pavers
- **Highlight views of Pacific Theater, Businesses and "The Big Tree"**

Please submit comments
and questions in the chat!



Site Plan



Please submit comments and questions in the chat!



greenmeme
LAND IMAGES
LANDSCAPE ARCHITECTURE

Game Results Mapped on Site

01



The Gardener
The Gardener creates space for plants and habitat for wildlife. Place the green objects for draw your own with the green marker (where your garden areas should be).



THE GARDENER

Best location for planted areas

01



The Gardener
The Gardener creates space for plants and habitat for wildlife. Place the green objects for draw your own with the green marker (where your garden areas should be).



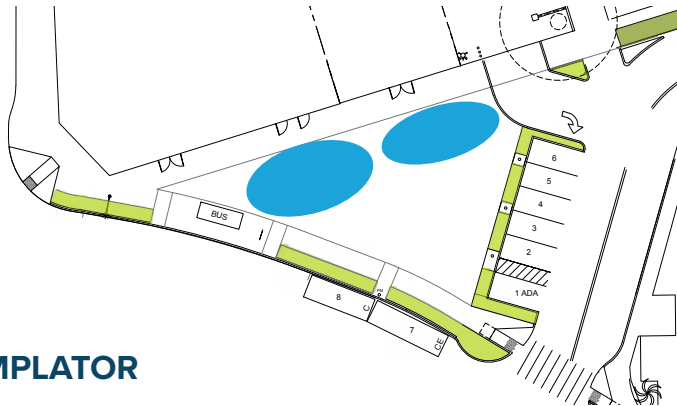
THE GARDENER

Best location for planted areas

02



The Contemplator
The Contemplator likes to take a break, enjoy the weather and ponder life. Soothe alone and with friends. Using the Blue marker, draw a place for an outdoor living room.



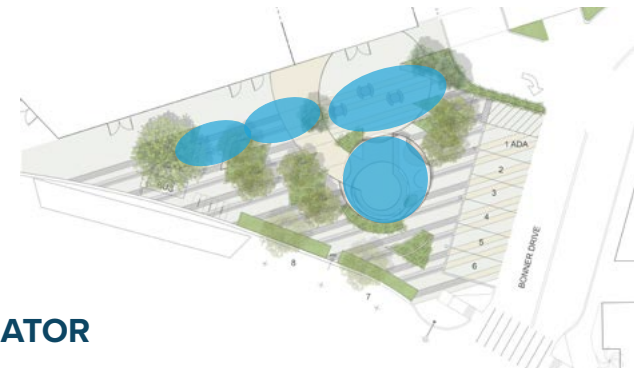
THE CONTEMPLATOR

Best places to sit

02



The Contemplator
The Contemplator likes to take a break, enjoy the weather and ponder life. Soothe alone and with friends. Using the Blue marker, draw a place for an outdoor living room.



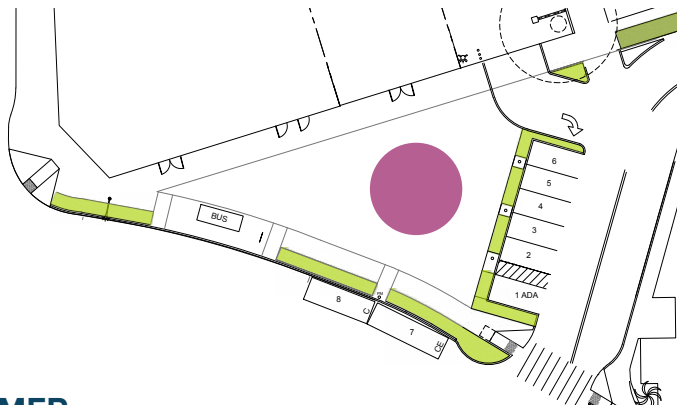
THE CONTEMPLATOR

Best places to sit

03



The Performer
You like to provide a spectacle for others. Whether playing music or dancing the day away, the performer finds space for entertainment. With the Pink Marker draw a performance spaces.



THE PERFORMER

Best area for a event / magic / shade

03



The Performer
You like to provide a spectacle for others. Whether playing music or dancing the day away, the performer finds space for entertainment. With the Pink Marker draw a performance spaces.



THE PERFORMER

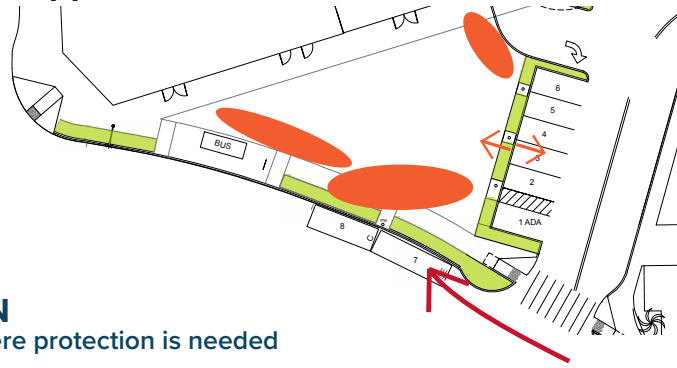
Best area for a event / magic / shade

Game Results Mapped on Site



THE GUARDIAN

Places where protection is needed



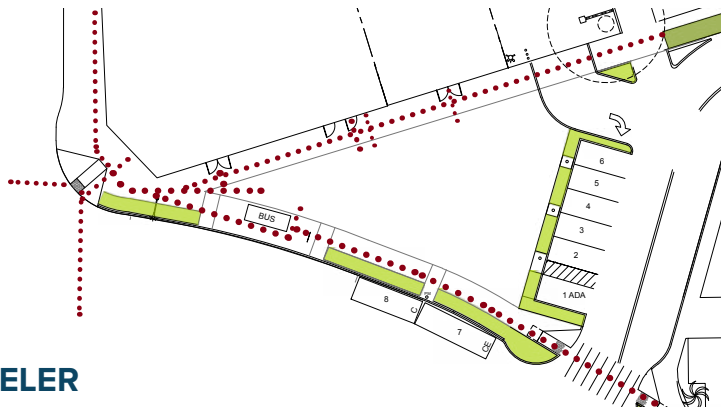
THE GUARDIAN

Places where protection is needed



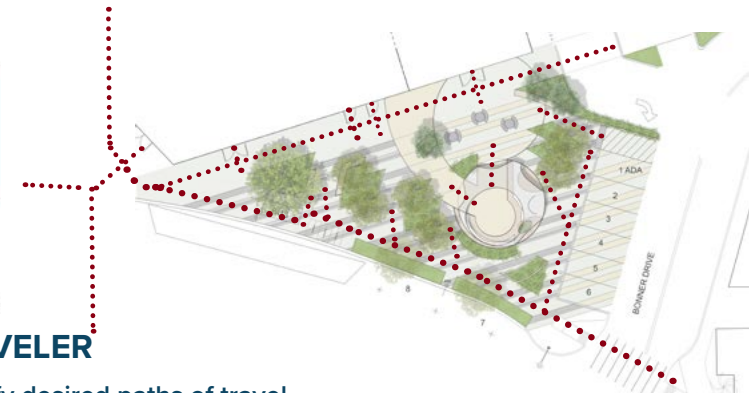
THE TRAVELER

Identify desired paths of travel



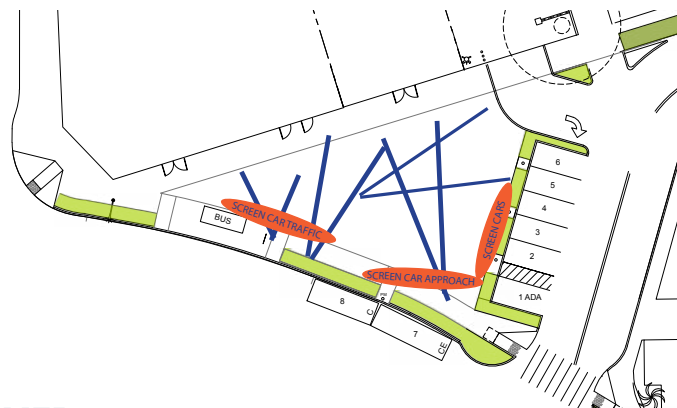
THE TRAVELER

Identify desired paths of travel



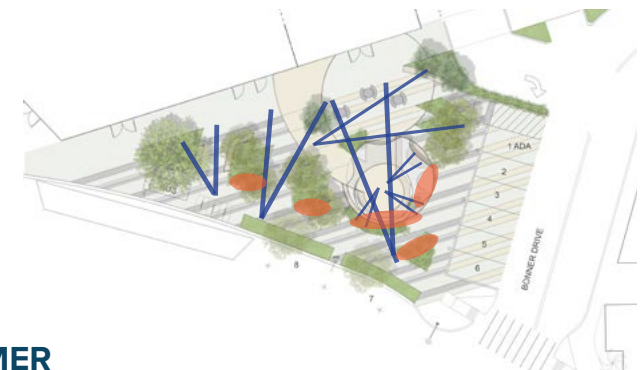
THE ASTRONOMER

Preserve Views / Screen views

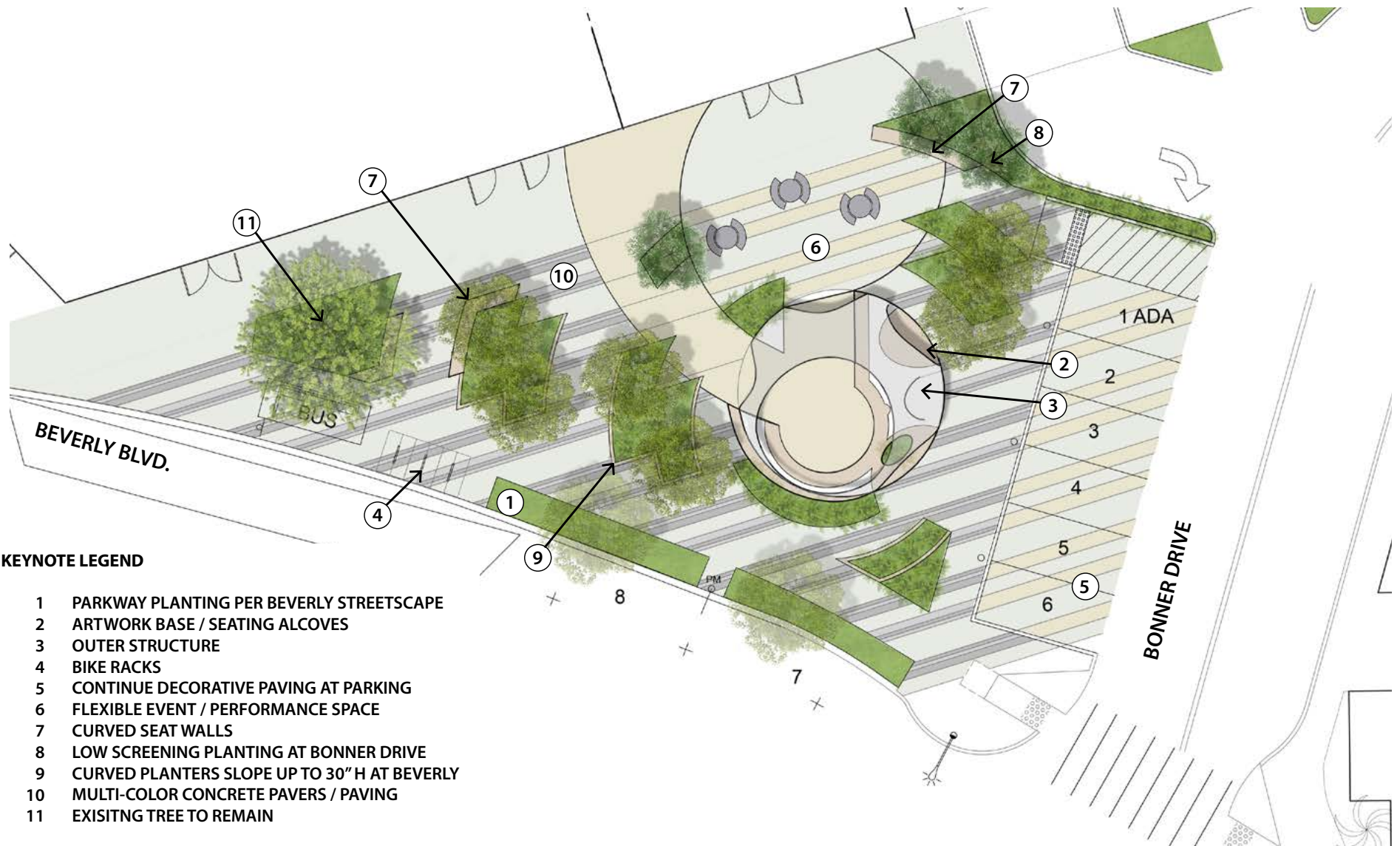


THE ASTRONOMER

Preserve Views / Screen views



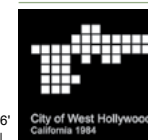
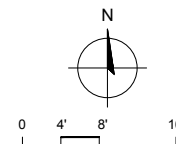
Site Plan



KEYNOTE LEGEND

- 1 PARKWAY PLANTING PER BEVERLY STREETSCAPE
- 2 ARTWORK BASE / SEATING ALCOVES
- 3 OUTER STRUCTURE
- 4 BIKE RACKS
- 5 CONTINUE DECORATIVE PAVING AT PARKING
- 6 FLEXIBLE EVENT / PERFORMANCE SPACE
- 7 CURVED SEAT WALLS
- 8 LOW SCREENING PLANTING AT BONNER DRIVE
- 9 CURVED PLANTERS SLOPE UP TO 30" H AT BEVERLY
- 10 MULTI-COLOR CONCRETE PAVERS / PAVING
- 11 EXISTING TREE TO REMAIN

Please submit comments and questions in the chat!



Plaza Rendering



Please submit comments
and questions in the chat!



greenmeme
LAND IMAGES
LANDSCAPE ARCHITECTURE

Plaza Rendering



Please submit comments and questions in the chat!



Plaza Rendering



Please submit comments
and questions in the chat!



Artist Statement: Schematic Design Phase

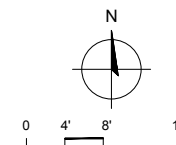
... The impulse to inscribe a central circle within the geometry of the triangular site appeared nearly universal ... the central, rounded form appeared again and again as an essential feature of the plaza.

... The sculpture is intended as a complex, human scaled distillation of all these uncovered values: welcome, centrality, permeability, and openness. Portals and carved interior / exterior seating areas express the permeability of the form. Low, curved walls and landscaped buffers offer protection from traffic. Portals frame views to highlight connections to nature, trees and sky, allowing visitors to both feel connected to the city and the broader environment.

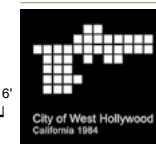


Artwork

Sculpture is 30' diameter / 16% of the plaza



Please submit comments
and questions in the chat!



greenmeme
LAND IMAGES
LANDSCAPE ARCHITECTURE

Artwork - Materials

The Contemplator + The Performer

Smooth Coat Finish: Sculpture interior walls "Performer" and "Contemplator" view portals (colored)
 The finishing coat is a smooth and leveled surface. The mortar used is made from cement and fine sand 1:3. Mortar is applied with the help of a wooden float.

02



The Contemplator

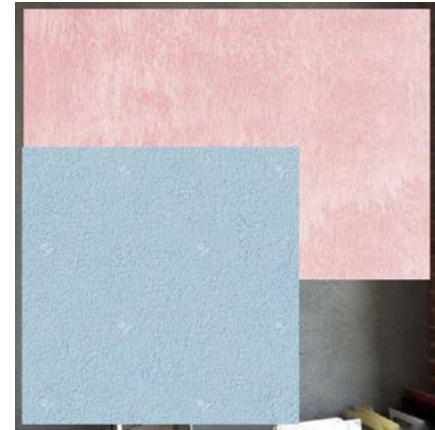
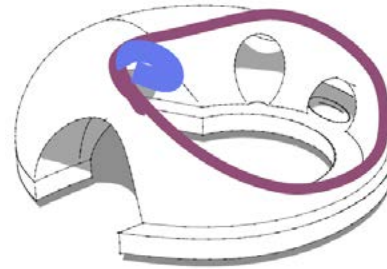
The Contemplator likes to take a break, enjoy the weather and ponder life (both alone and with friends). Using the Blue marker, draw a place for an outdoor living room.

03



The Performer

You like to provide a spectacle for others. Whether playing music or dancing the day away, the performer likes spaces to entertain. With the Pink Marker draw a performance space(s).



The Gardener

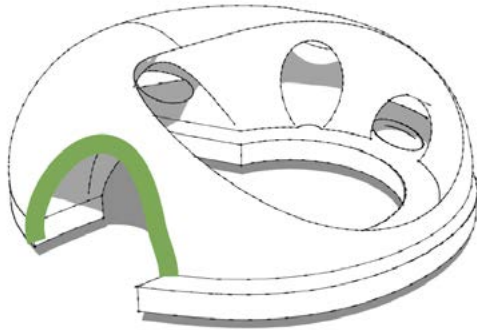
Trellis: "Gardener" View Portal (Vine Species TBD)

01



The Gardener

The Gardener creates space for plants and habitat for wildlife. Place the green objects (or draw your own with the green marker) where you garden areas should be.



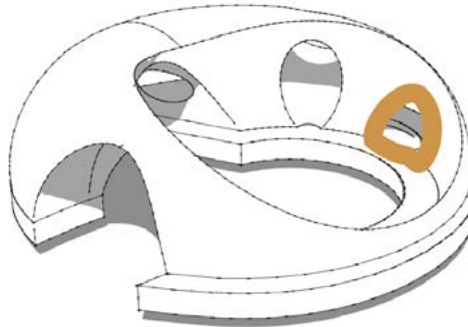
Please submit comments and questions in the chat!



Artwork - Materials

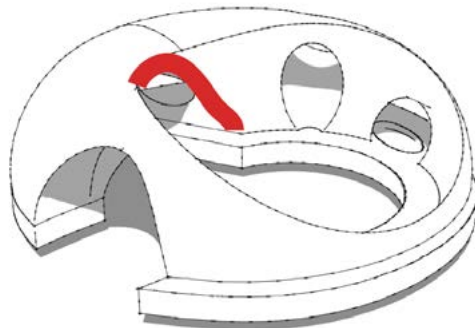
The Guardian

Rolled or tiled brass sheet: Interior treatment for seat pocket at corner of Beverly and Bonner, "Guardian" view portal
Laser cut brass sheet will be rolled (or tiled if needed) to be smoothly installed within the portal

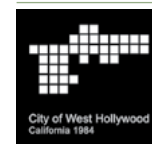


The Traveler

T&G Cedar 1" x 4" : Archway interior treatment "Traveler" View Portal
Tongue and groove cedar planks will be scored to back to allow for a smooth arch. Potential lighting embed.



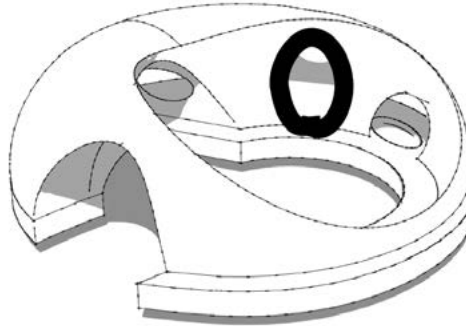
Please submit comments and questions in the chat!



Artwork - Materials

The Astronomer

Black Slate Tile Finish: Sculpture interior walls and "Astronomer" View Portal
1" Tile hexagonal pattern smoothly installed within the portal. Light grey grout



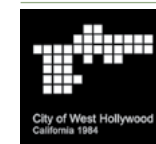
Scraped Finish: Sculpture Exterior and Paving Treatment

The final coat of plaster is applied, approximately 6-12mm.
Then the material will stiffen over a few hours.
The surface is scraped in a pattern to a dept of 3mm.

Steel straight edge old saw blade or other such tools are used to scrape.
Such a scraped surface is less liable to cracks.



Please submit comments
and questions in the chat!



Artwork - Rendering



Please submit comments
and questions in the chat!



Plaza at Night

Lighting Designer to join team for next version

Lighting design to emphasize safety / visibility

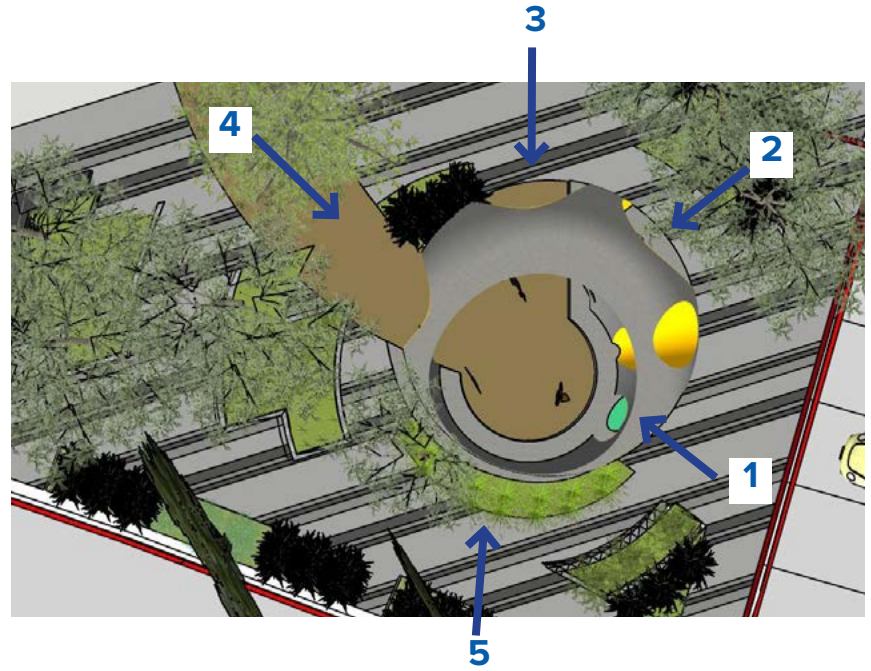
Sculpture lighting to enhance form

Sculpture lighting can shift to symbolic / community expression for holidays or special events
(ie. green St. Patrick's Day, rainbow - pride)

Expressively lit sculpture at edge of West Hollywood can serve as gateway, identifiable marker



Sculpture Sightline Study

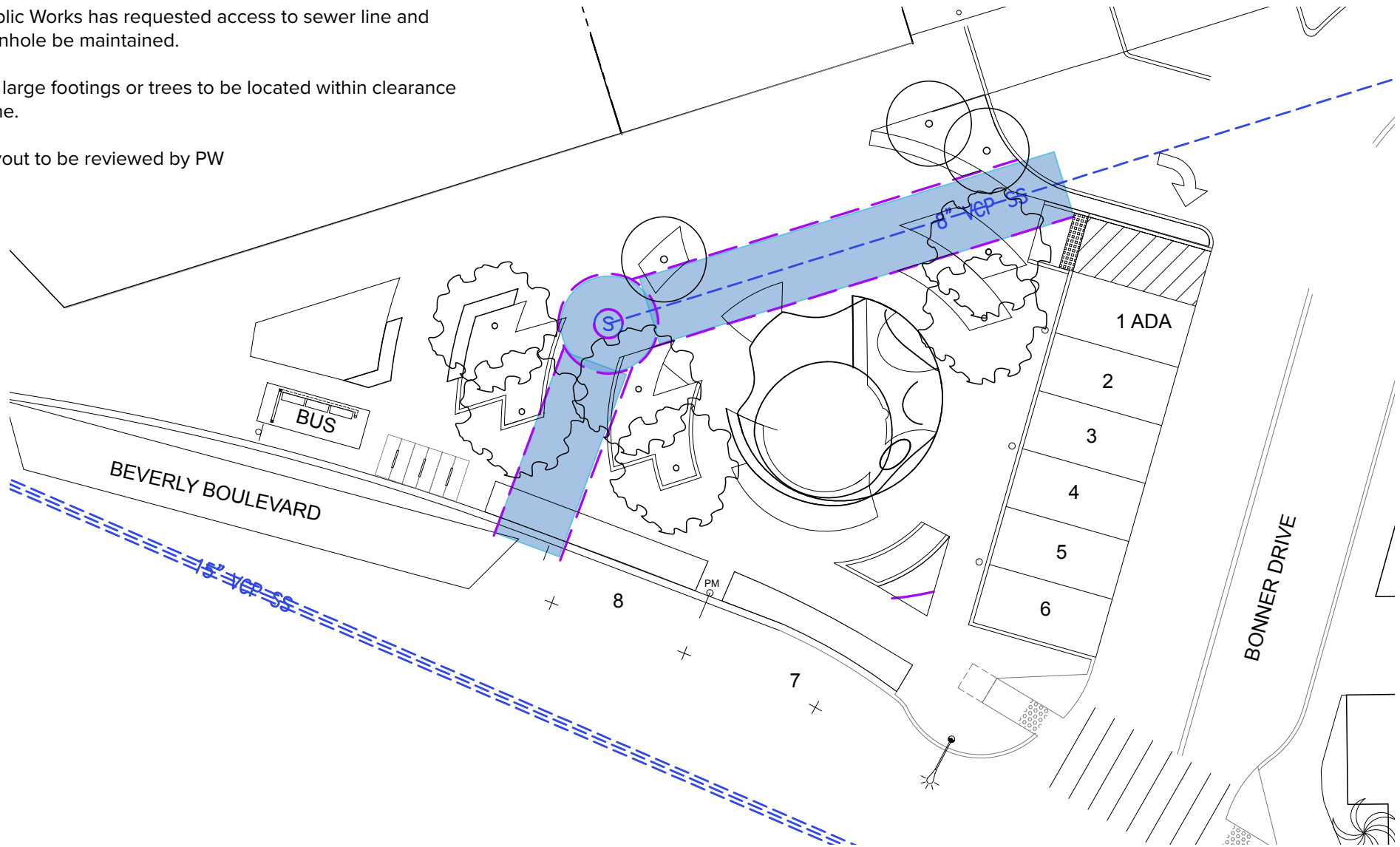


Utility Clearance

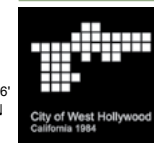
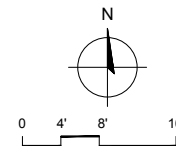
Public Works has requested access to sewer line and manhole be maintained.

No large footings or trees to be located within clearance zone.

Layout to be reviewed by PW



Please submit comments and questions in the chat!



Materials - Constructed



Inspiration - Curved seating with striped paving



Inspiration - Cabana pattern upholstery textile

Curved concrete planters ramp to 30" H at Beverly
Concrete texture to match sculpture



Concrete seatwalls near bus /
Robertston corner
Smooth concrete texture /
Occasional seat toppers for arms
and backrest

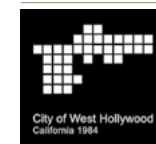


Paving - Integral color concrete and concrete pavers



Stepstone - Narrow Modular Pavers - Accent Paving

Please submit comments
and questions in the chat!



Materials - Furnishings



Victor Stanley - Steelsites
Curved bench topper



Landscape Forms - Charlie Table
Surface Mount / ADA Accessible



Anova - Airi Leaf Trash Can
Design District Standard



Bike WeHo U-Shaped Bike Racks
City Standard



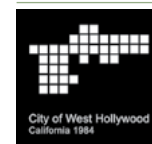
Mmcite - Pixel 2 surface mounted side table



Landscape Forms - Bravo Bistro
Moveable furnishing option



Please submit comments
and questions in the chat!



greenmeme
LAND IMAGES
LANDSCAPE ARCHITECTURE

Plant Palette

Street Scape Planting - Proposed

(per City of West Hollywood)

Tree Species



Platanus acerifolium 'Columbia'
Columbia London Plane Tree



Lagerstroemia indica x fauriei 'Tuscarora'
Tuscarora Crape Myrtle

Plaza Planting Concept

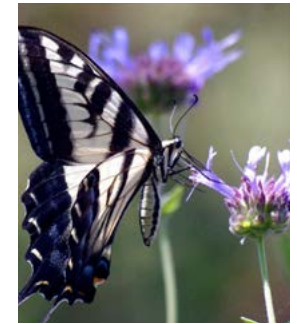
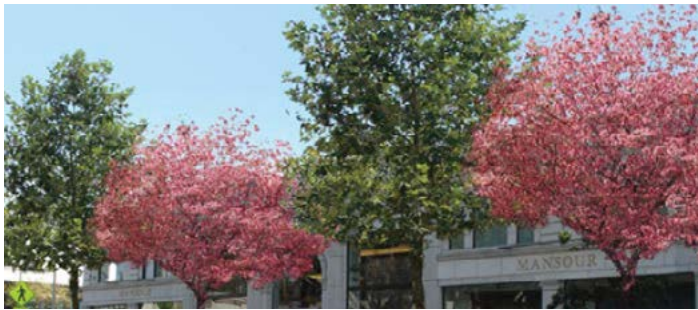
- Sense of welcome, respite, sanctuary
- More intimate scale
- Native plants to provide habitat
- Mix of deciduous and evergreen
- Softer, natural free-flowing form
- Low water use, low maintenance

Habitat

- Water source
- Cover
- Mulch
- Nectar
- Food (fruit, seeds)



Tree Pattern



Parkway Shrubs

BEVERLY:



CALLISTEMON 'BETTER JOHN'



CARISSA 'GREEN CARPET'



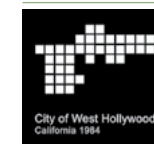
DIANELLA 'CASSA BLUE'



LIGUSTRUM 'SUNSHINE'

-Order, District-scale Pattern, Structured

Please submit comments and questions in the chat!



Plant Palette

Trees
Large Shrubs



Grevillea 'Moonlight' Moonlight Grevillea
Evergreen 8' H x 6' W Cream year round



Chilopsis linearis Desert Willow
Deciduous 15-30' H x 10-20' W Rose spring



Lyonothamnus floribundus 'Asplendiifolius'
Catalina Ironwood Evergreen 35' H x 15-20' W

Shrubs
Native habitat



Muhlenbergia rigens
Deer Grass



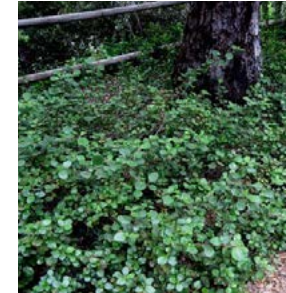
Achillea millifolium 'Paprika'
Paprika Yarrow



Dudleya caespitosa
Coast Dudleya



Salvia 'Poza Blue'
Poza Blue Salvia



Ribes viburnifolium
Evergreen Current

Shrubs
Structure



Hardenbergia violacea
'Happy Wanderer'
Purple Lilac Vine



Westringia 'Morning Light'
Coast Rosemary



Olea europaea 'Montra'
Little Ollie Dwarf Olive



Callistemon 'Little John'
Compact Bottlebrush



Dianella 'Cassa Blue'
Cassa Blue Flax Lily

Shade Study



March / Sept 21 9:30 am



June 21 9:30 am



December 21 9:30 am



March / Sept 21 12:30 pm



June 21 12:30 pm



December 21 12:30 pm



March / Sept 21 3:30 pm

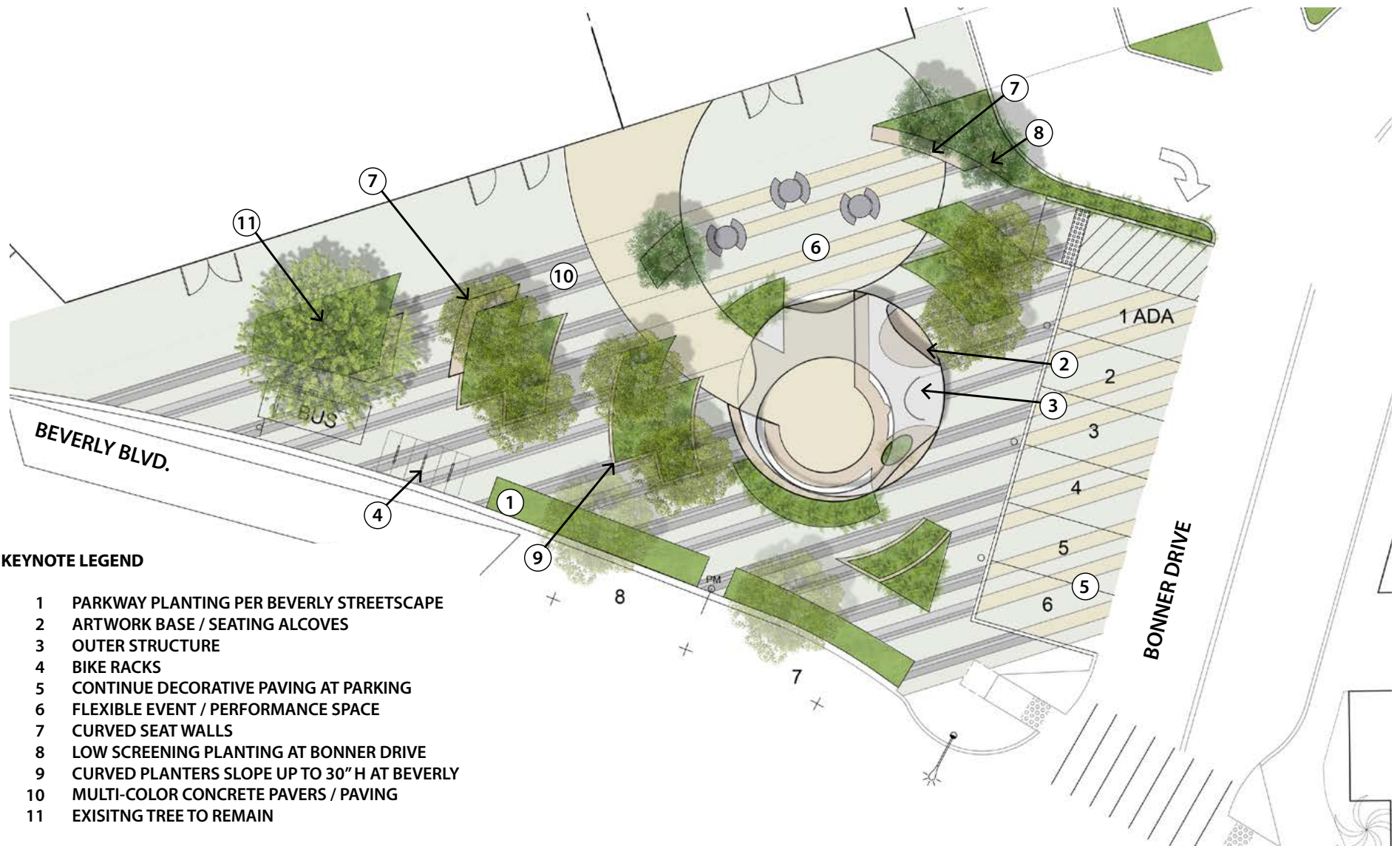


June 21 3:30 pm



December 21 3:30 pm

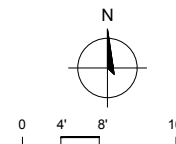
Site Plan



KEYNOTE LEGEND

- 1 PARKWAY PLANTING PER BEVERLY STREETSCAPE
- 2 ARTWORK BASE / SEATING ALCOVES
- 3 OUTER STRUCTURE
- 4 BIKE RACKS
- 5 CONTINUE DECORATIVE PAVING AT PARKING
- 6 FLEXIBLE EVENT / PERFORMANCE SPACE
- 7 CURVED SEAT WALLS
- 8 LOW SCREENING PLANTING AT BONNER DRIVE
- 9 CURVED PLANTERS SLOPE UP TO 30" H AT BEVERLY
- 10 MULTI-COLOR CONCRETE PAVERS / PAVING
- 11 EXISTING TREE TO REMAIN

Please submit comments and questions in the chat!





Discussion Questions:

1. What are some community events that you can envision or would like to see at the plaza?
2. What are the qualities that would make you consider meeting friends for coffee or lunch at the plaza?
3. Is there something that would make it more inviting for you?
4. Do you feel there is enough variety of seating to encourage different size groups?
5. Are there other aspects of the Design District you'd like to see expressed?
6. Are there other amenities (ie. bike related, dog related) that you'd like to see?

Thank You

Instructions for Questions / comments:

1. Please submit comments or questions at anytime using the 'chat' function on zoom.
2. Questions and comments will be read during the Q & A / Discussion period.
3. To comment by phone, dial 9 to let the host know you want to speak and dial 6 to unmute yourself.
4. Please limit your comments to 3 minutes per speaker.
5. If you would like to follow up later, contact David Fenn, DFenn@weho.org (323) 848-6336

Please submit comments
and questions in the chat!

