

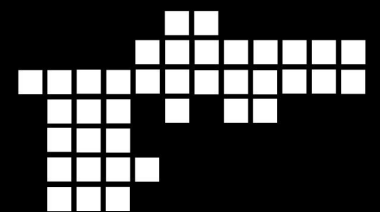


DESIGN DISTRICT

STREETSCAPE & UNDERGROUNDING PROJECT

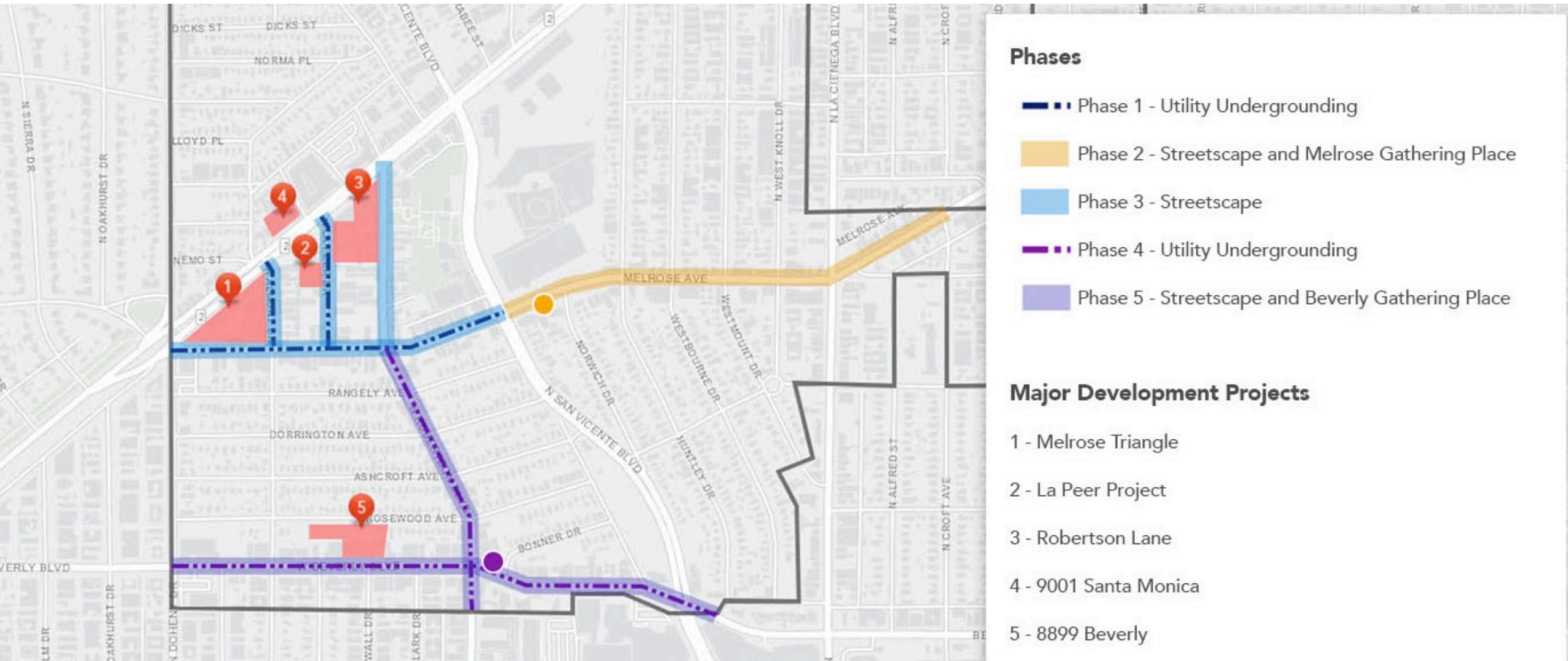
Melrose Gathering Place

Community Meeting 6/30/2021



City of West Hollywood
California 1984

Design District Streetscape Project, Gathering Spaces & Utility Undergrounding



Design District Streetscape & Undergrounding Project

Districtwide Benches & Trash Receptacles Selected

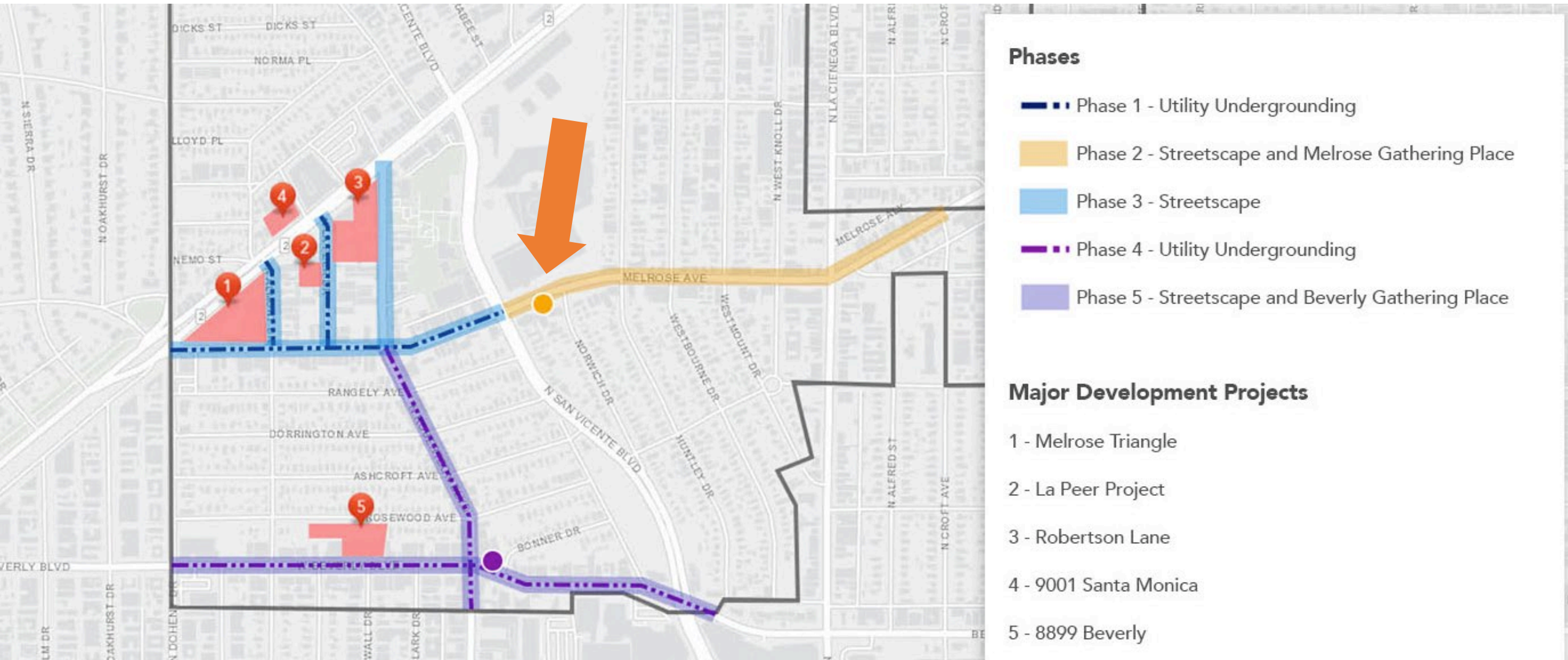
- Design District Working Group Online Survey
- City staff presented top scoring options to the Public Facilities Commission (PFC) on 6/9/21
- PFC recommended the Lily Bench & Airi Leaf Trash Receptacle in Gray or Silver
- City Council Approved the selection 6/21/21



Phase	Project	Construction Dates
1	Utility Undergrounding - Melrose west of San Vicente	August 2021 to March 2022
	Utility Undergrounding - La Peer & Almont	
2	Streetscape Improvements - Melrose from San Vicente Blvd to Croft Ave.	All of 2022
	Gathering Space - Melrose Ave. at Norwich Dr.	
3	Streetscape Improvements Melrose Ave (San Vicente Blvd. to Doheny), La Peer Dr. (from Santa Monica Blvd. to Melrose Ave.), Almont Dr. (Santa Monica Blvd. to Melrose Ave.) & Robertson from (Melrose Ave to Santa Monica Blvd.)	All of 2023
4	Utility Undergrounding - Beverly Blvd E. to W. City Limit & Robertson south of Melrose	All of 2024
5	Streetscape Improvements - Beverly Blvd & Robertson south of Melrose	All of 2025
	Gathering Space - Beverly Blvd. at Bonner Dr.	

Design District Streetscape & Undergrounding Project

Melrose Gathering Space



Design District Streetscape & Undergrounding Project

History of the Design District Streetscape Master Plan

- Avenues Working Group convened in 2012
- Master Plan adopted in 2013
- Addendum adopted in 2014 for gathering spaces
 - Community based process
 - 10+ meetings with community



Gathering Places in the Design District

- City identified three spaces having room to create “gathering places” for community
- Bonner Gathering Place (at Beverly and Robertson) is currently a City parking lot
- Melrose at Norwich is currently sidewalk and diagonal parking near the PDC
- Robertson North could utilize street itself as public space



Norwich Gathering Space Characteristics in Adopted Streetscape Master Plan

- Accommodate passive uses such as reading, relaxing, conversing
- Do not accommodate public events
- Visibility and access for businesses
- Pathways east-west to access businesses
- Seating – sculptural and natural, ie boulders
- Water – a minimal stream element
- Paving – natural and permeable
- Lighting
- A double row of trees for shade
- Drought tolerant planting
- Sculpture or other public art
- A directory or wayfinding element
- No restaurant dining



Melrose Gathering Space Meetings

- July 2019: ACAC approved artist selection
- 2019: Working Group convened to select details and select key items to maintain from plan
- January 2020: ACAC approved Concept Art Plan
- January 2020: Community Meeting to get input on project
- July 2020: ACAC approved Final Art Plan
- June 2021: Design District Working Group Meeting



Norwich Gathering Space





© 2021 Google

© 2021 Google

SAGE'S

© 2021 Google

Google



Norwich Gathering Space





Norwich Gathering Space





Norwich Gathering Space



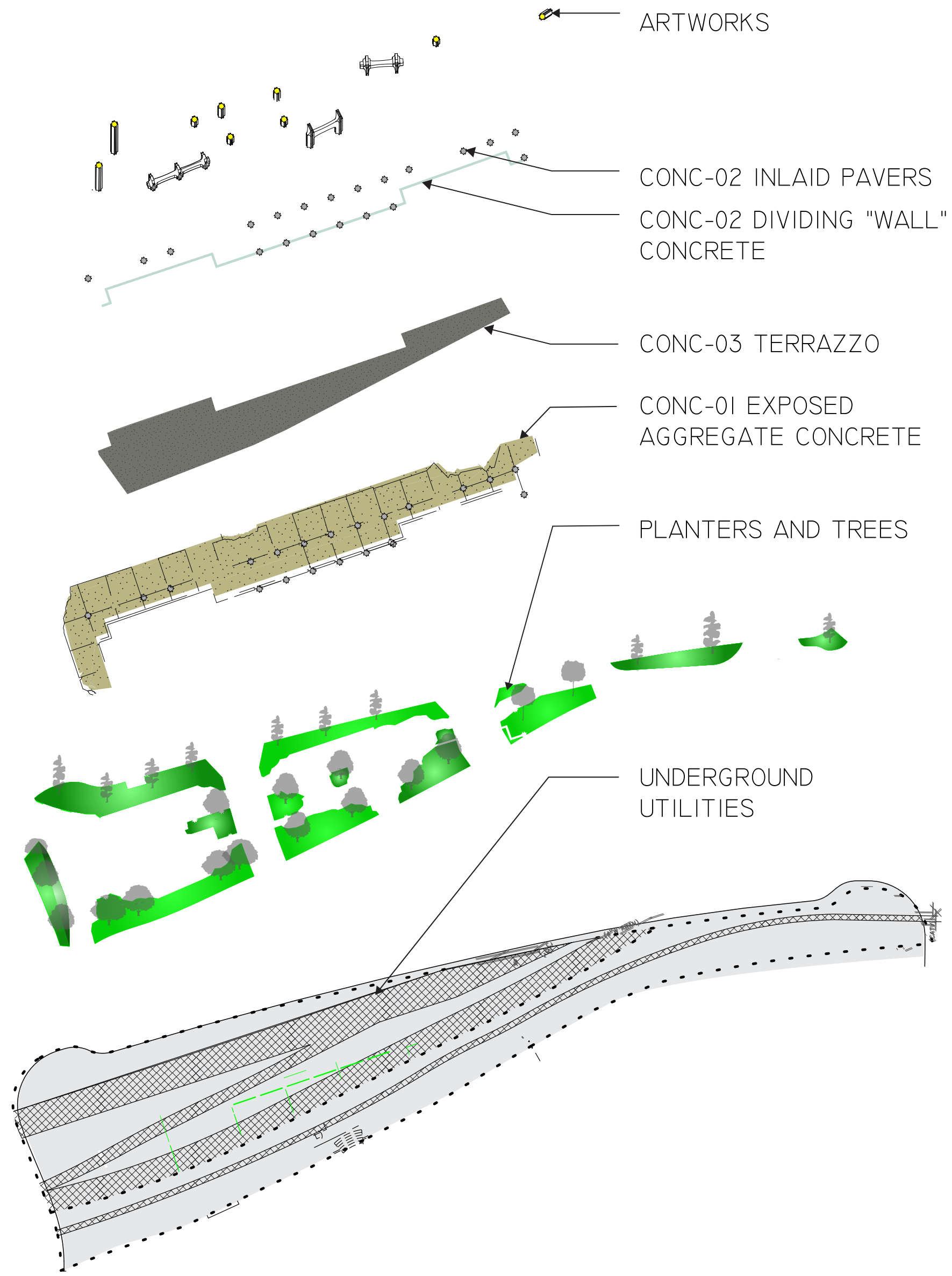


Norwich Gathering Space



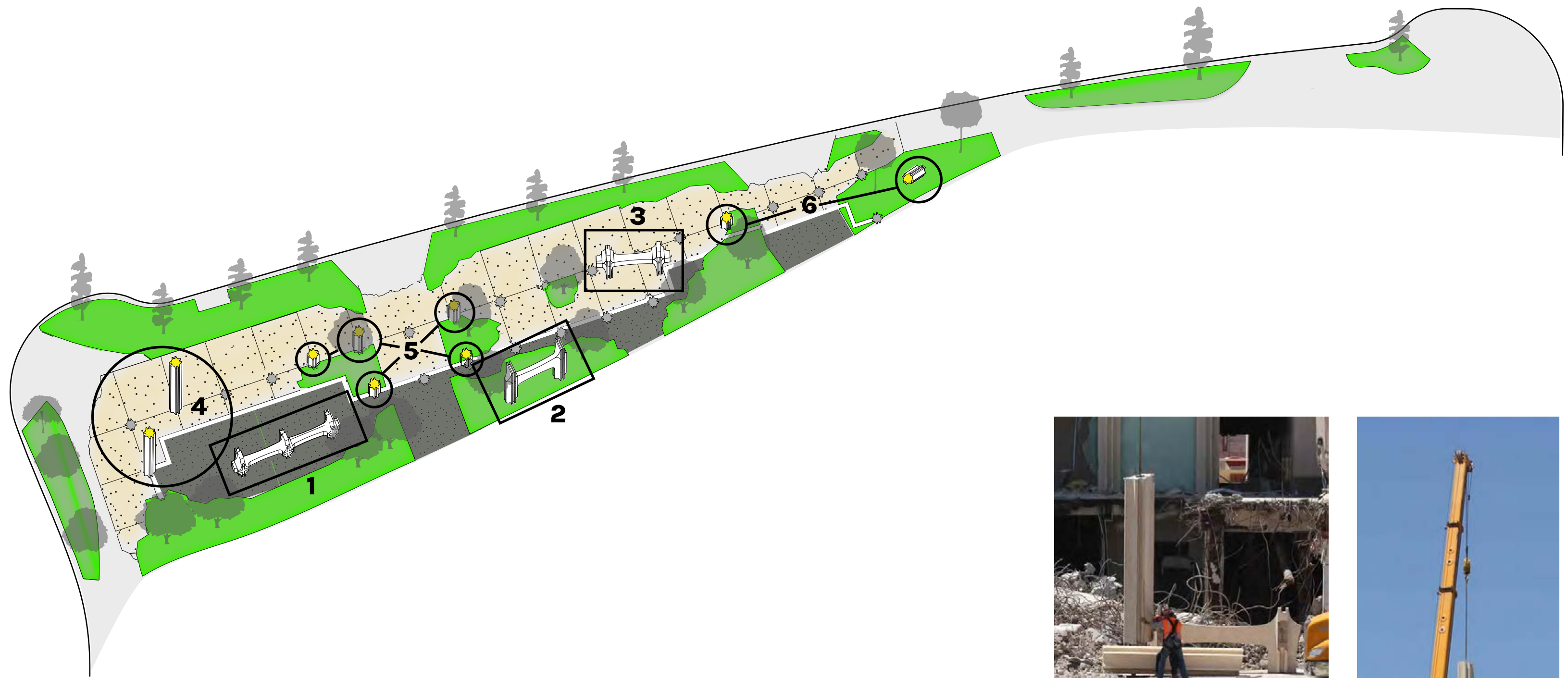
EXTRACTION

EXPLODED SITE VIEW

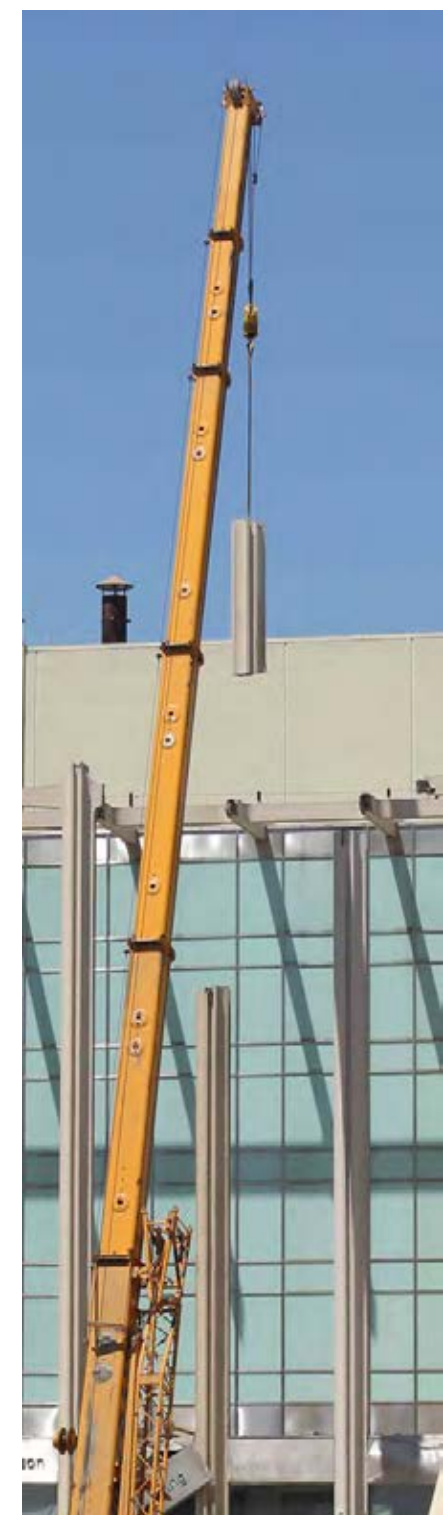


EXTRACTION

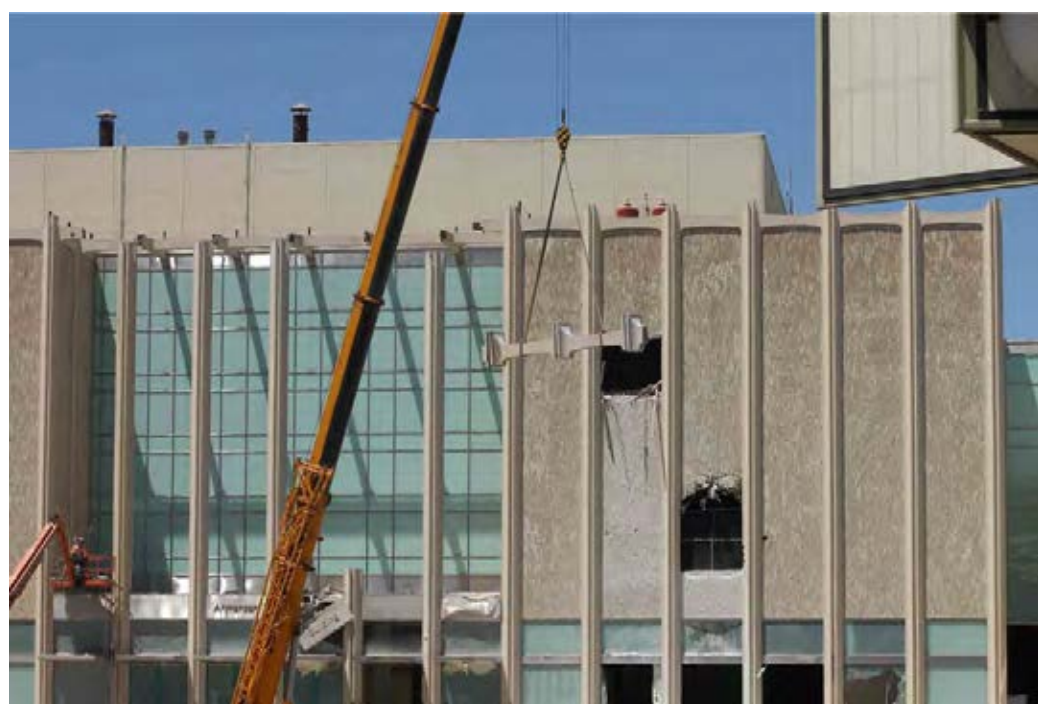
ARTWORK LOCATIONS AND SOURCE MATERIAL



4



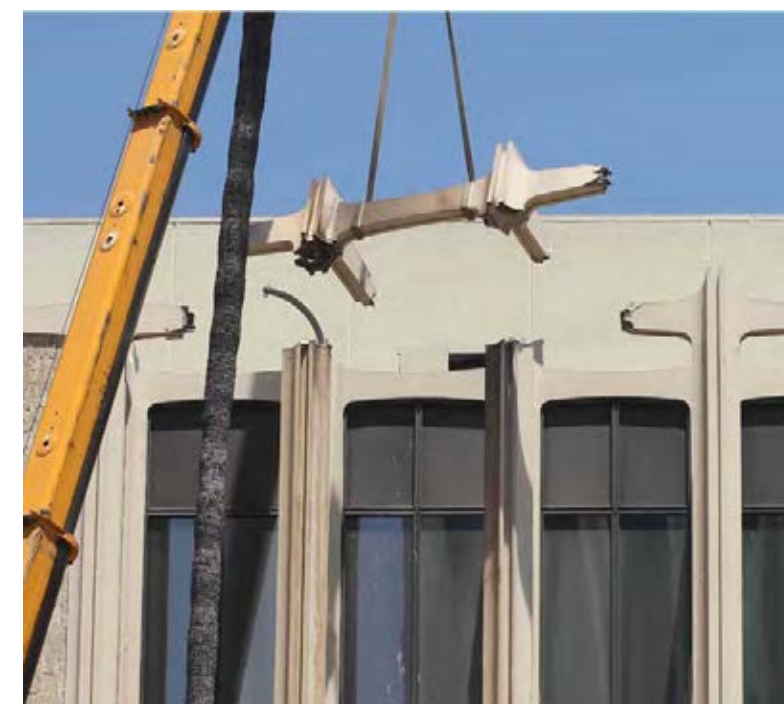
5-6



1



2

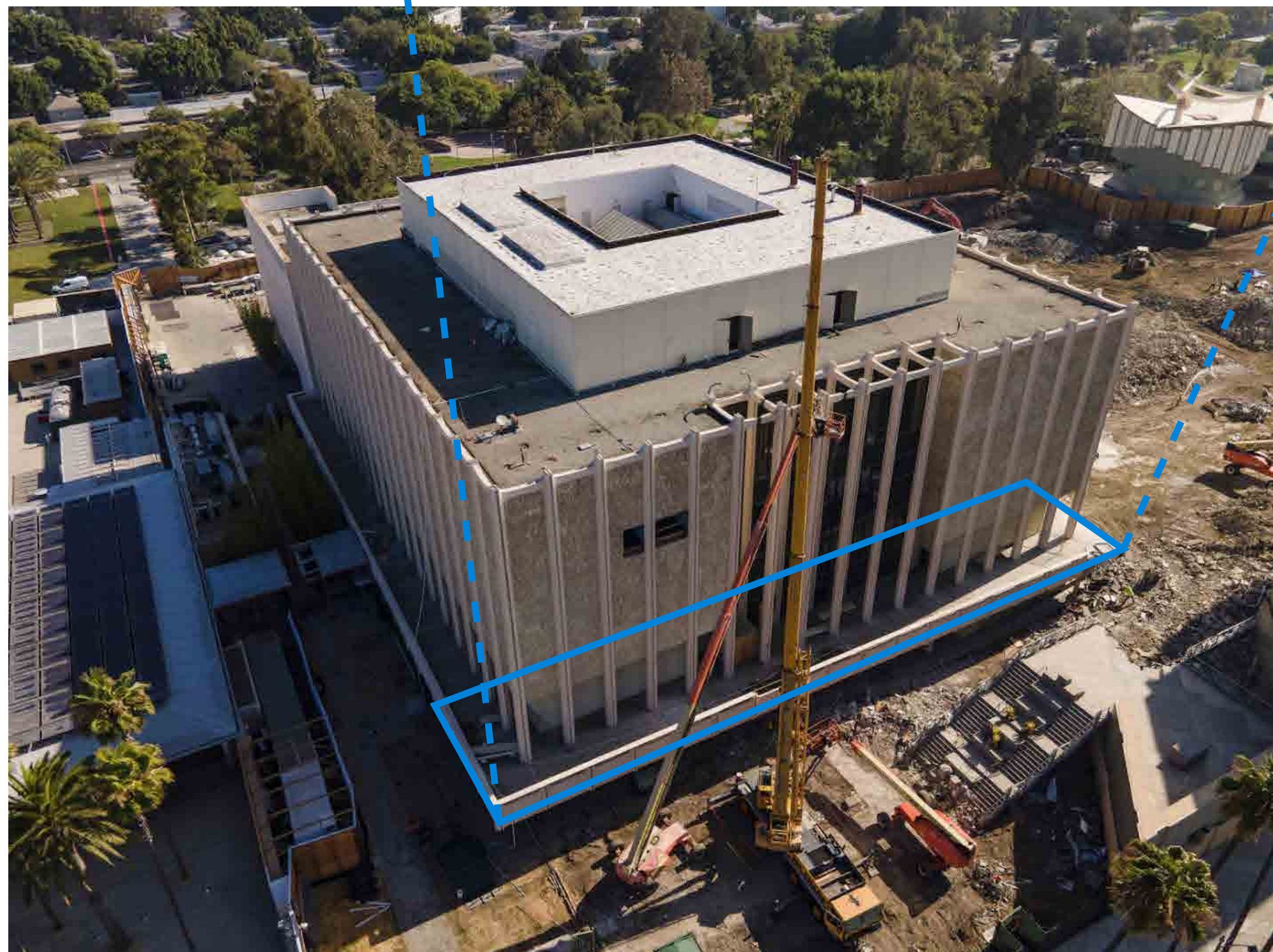
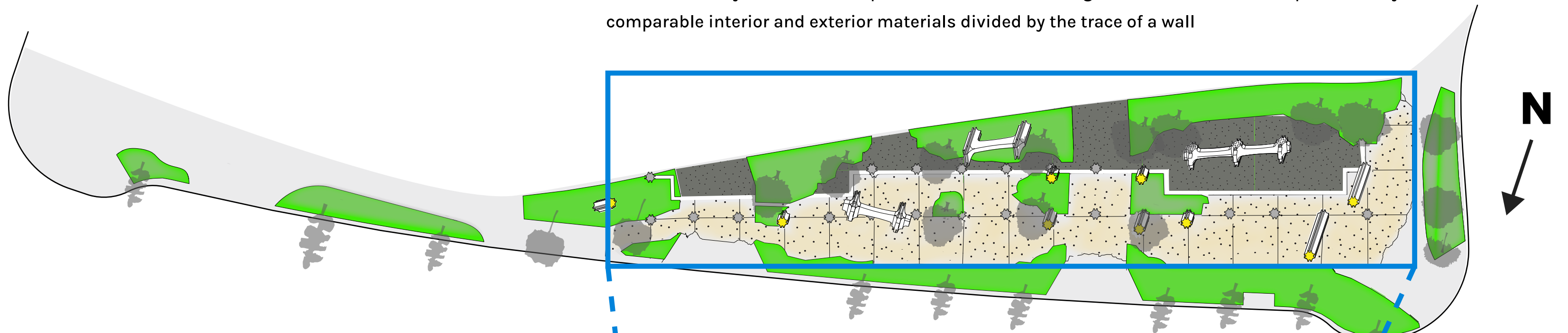


3

EXTRACTION

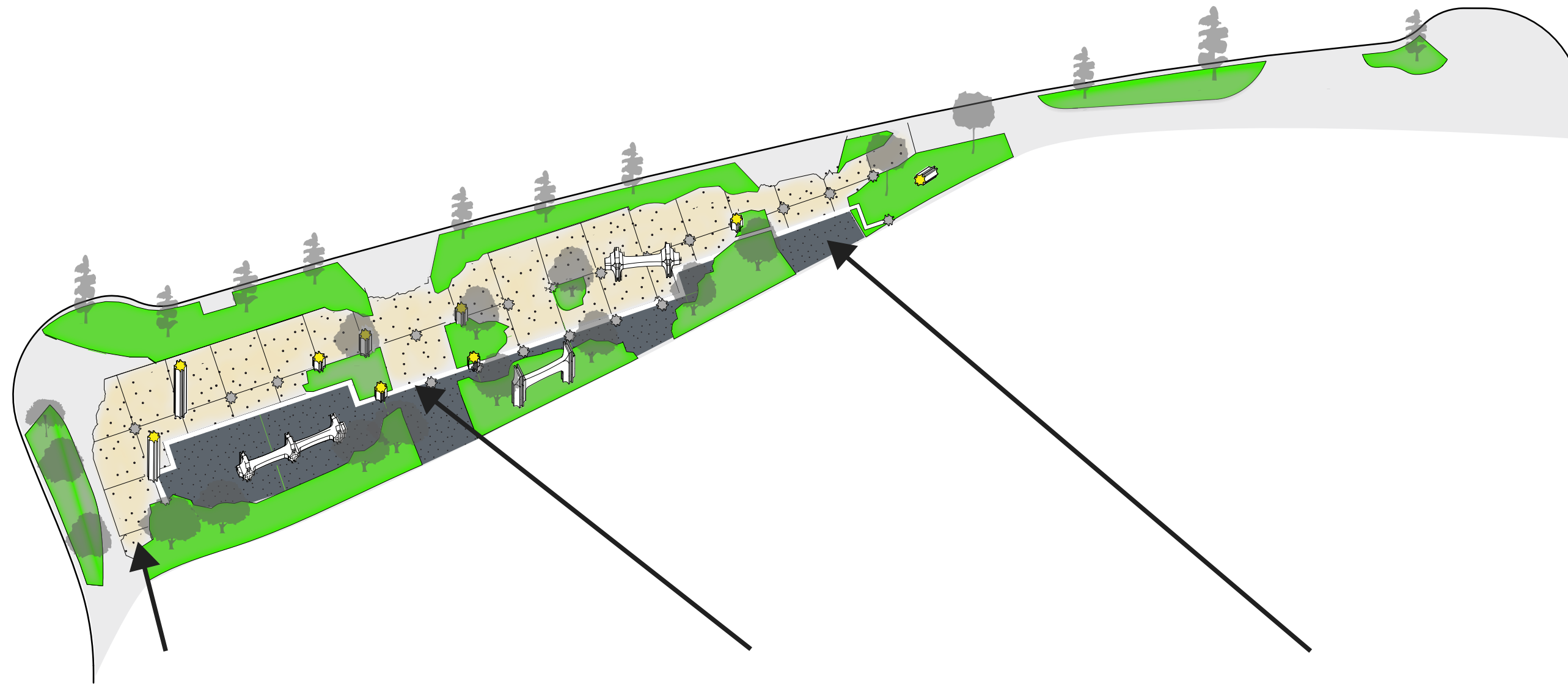
GROUND MATERIAL CONCEPT AND SOURCE REFERENCE

Cement work layout is a scale replica of location where fragments were extracted, represented by comparable interior and exterior materials divided by the trace of a wall



EXTRACTION

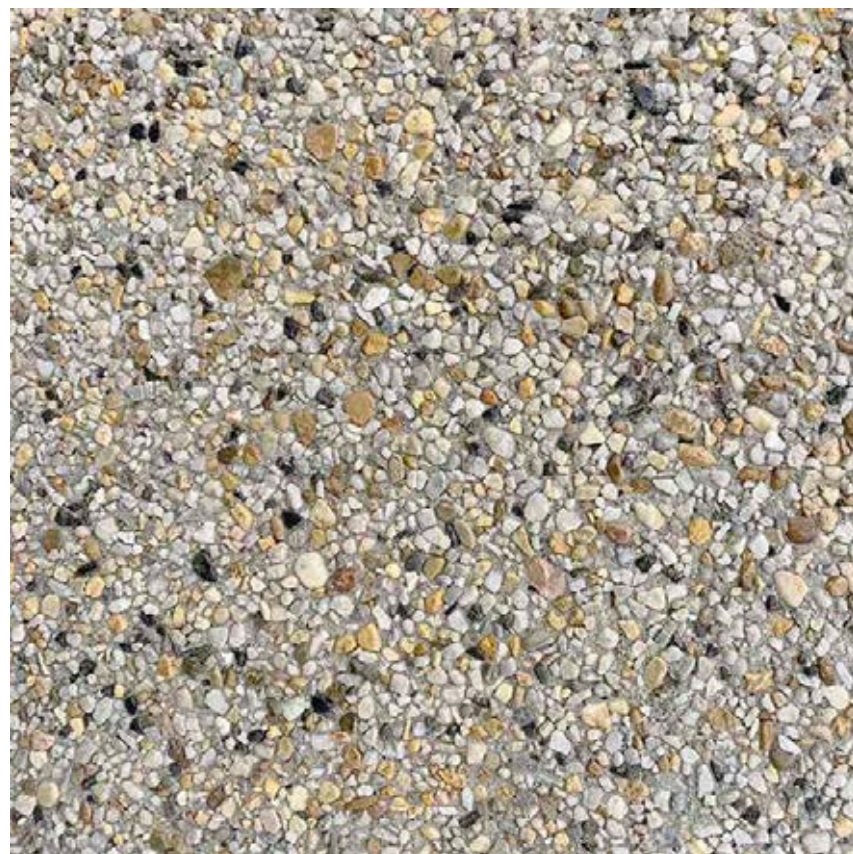
GROUND MATERIALS (OPTION A: PREMIUM)



EXTERIOR PLAZA (CONC-01)

TRACE OF A WALL (CONC-02)

MUSEUM INTERIOR (CONC-03)



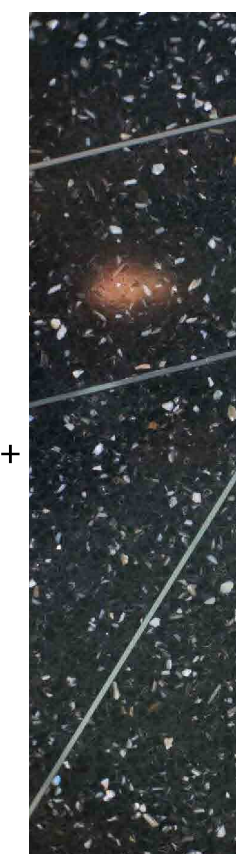
WARM BROWN CONCRETE
EXPOSED AGGREGATE FINISH



WHITE/GREY CONCRETE
WITH STAMPED TEXTURE FINISH



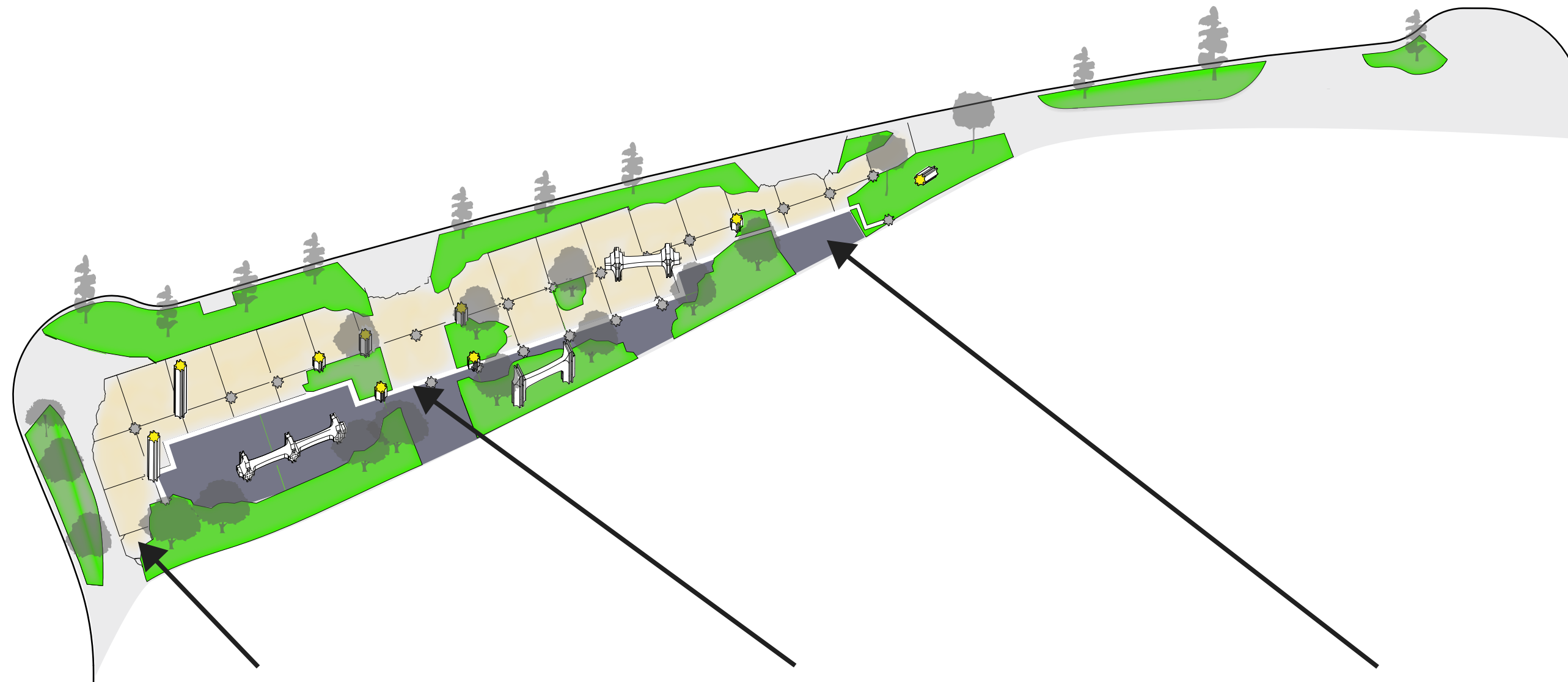
COOL TERRAZZO
SLATE-COLORED MATRIX (PANTONE 4139 C)
PEARLESCENT AND RED/BROWN MARBLE AGGREGATE



ZINC STRIPS

EXTRACTION

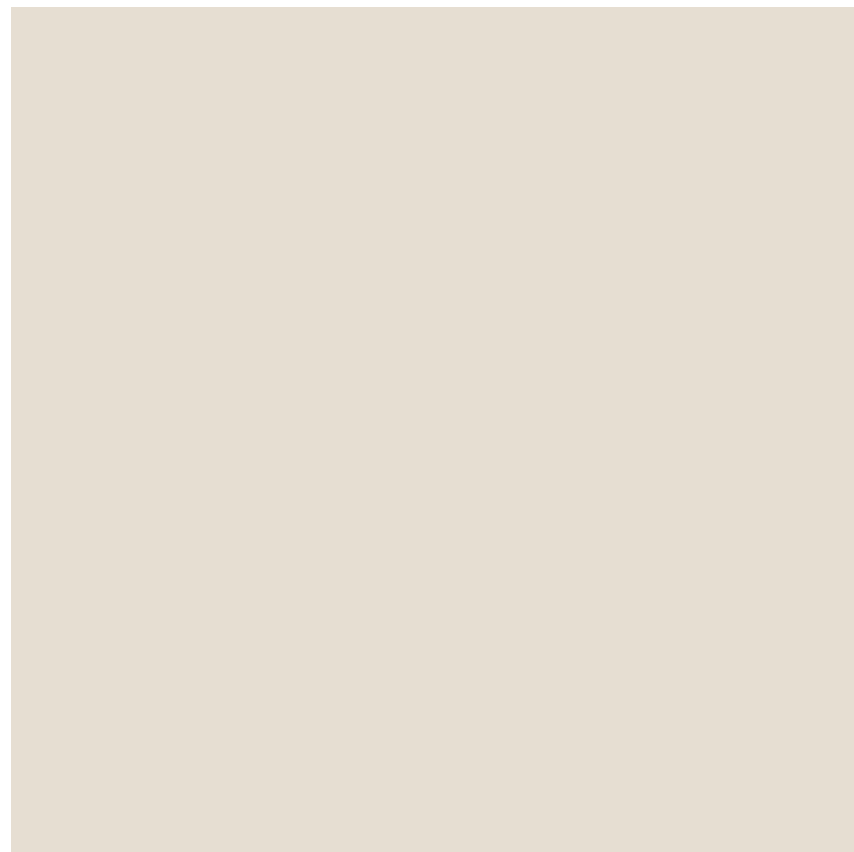
GROUND MATERIALS (OPTION B: BUDGET)



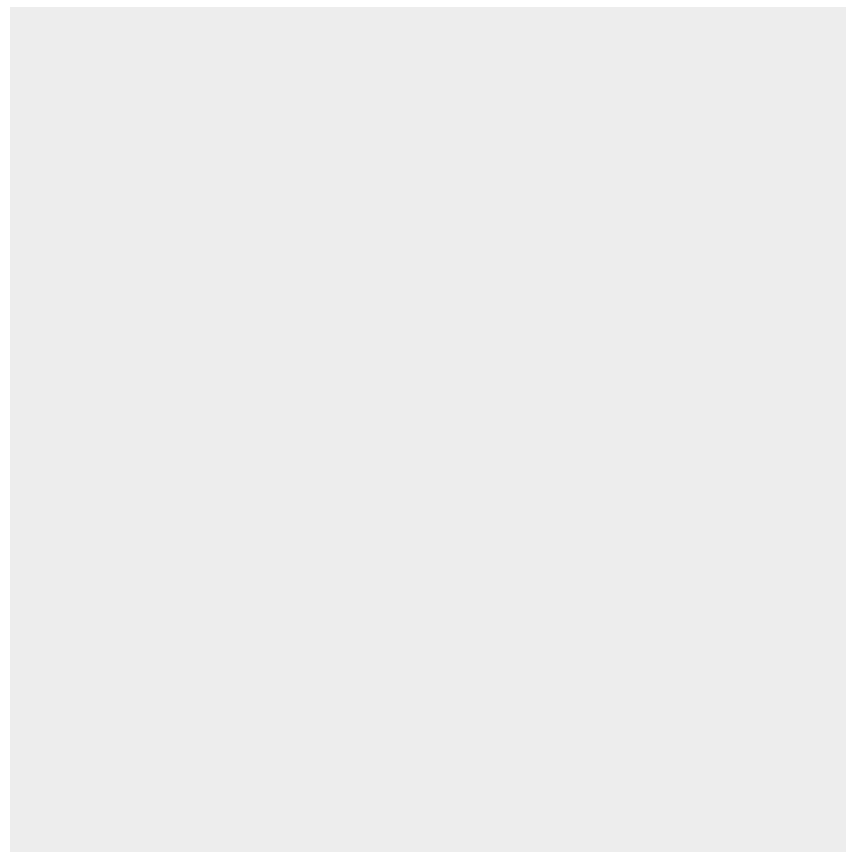
EXTERIOR PLAZA (CONC-01)

TRACE OF A WALL (CONC-02)

MUSEUM INTERIOR (CONC-03)



WARM BEIGE CONCRETE
(C=9%, M=10%, Y=15%, K=0%)
SANDPAPER FINISH



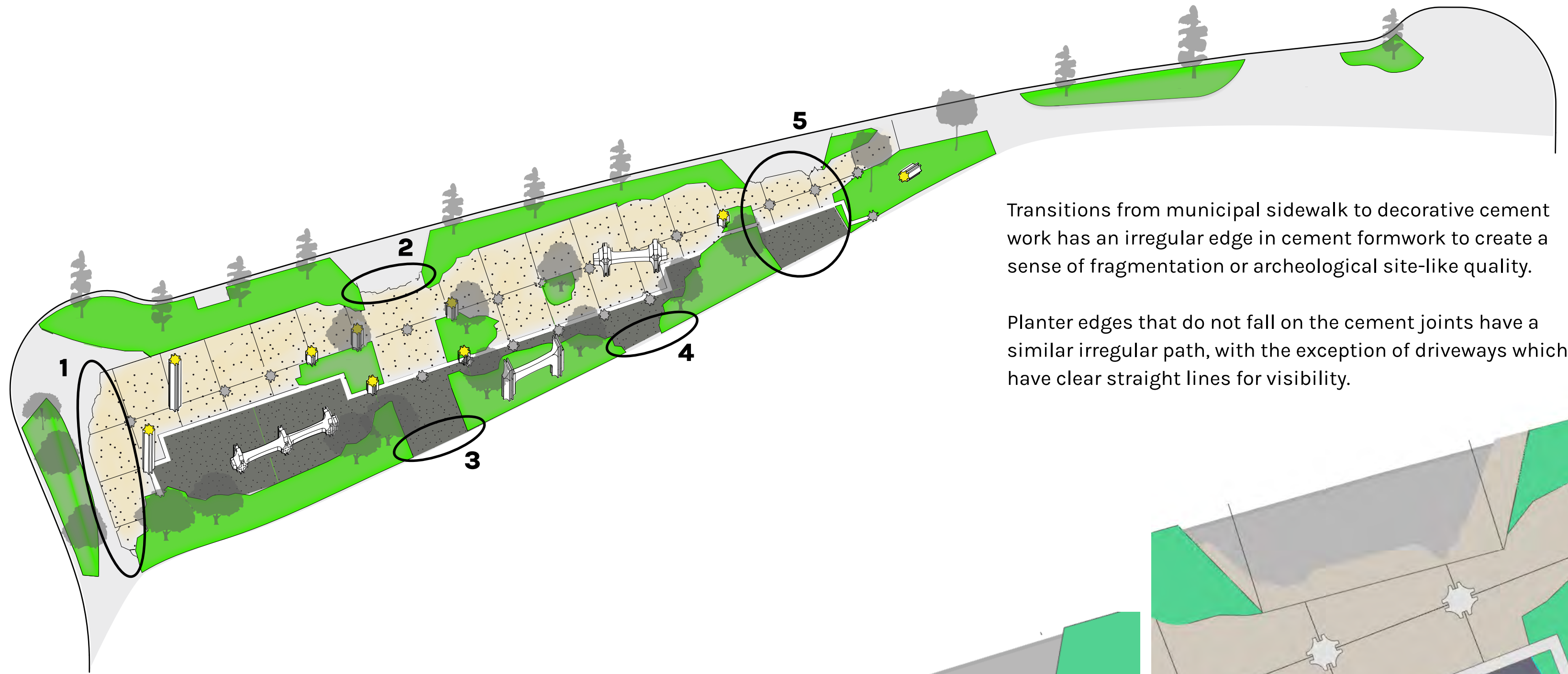
WHITE/GREY CONCRETE
(C=6%, M=4%, Y=4%, K=0%)
SANDPAPER FINISH



SLATE-COLORED CONCRETE
(C=58%, M=50%, Y=35%, K=7%)
SANDPAPER FINISH

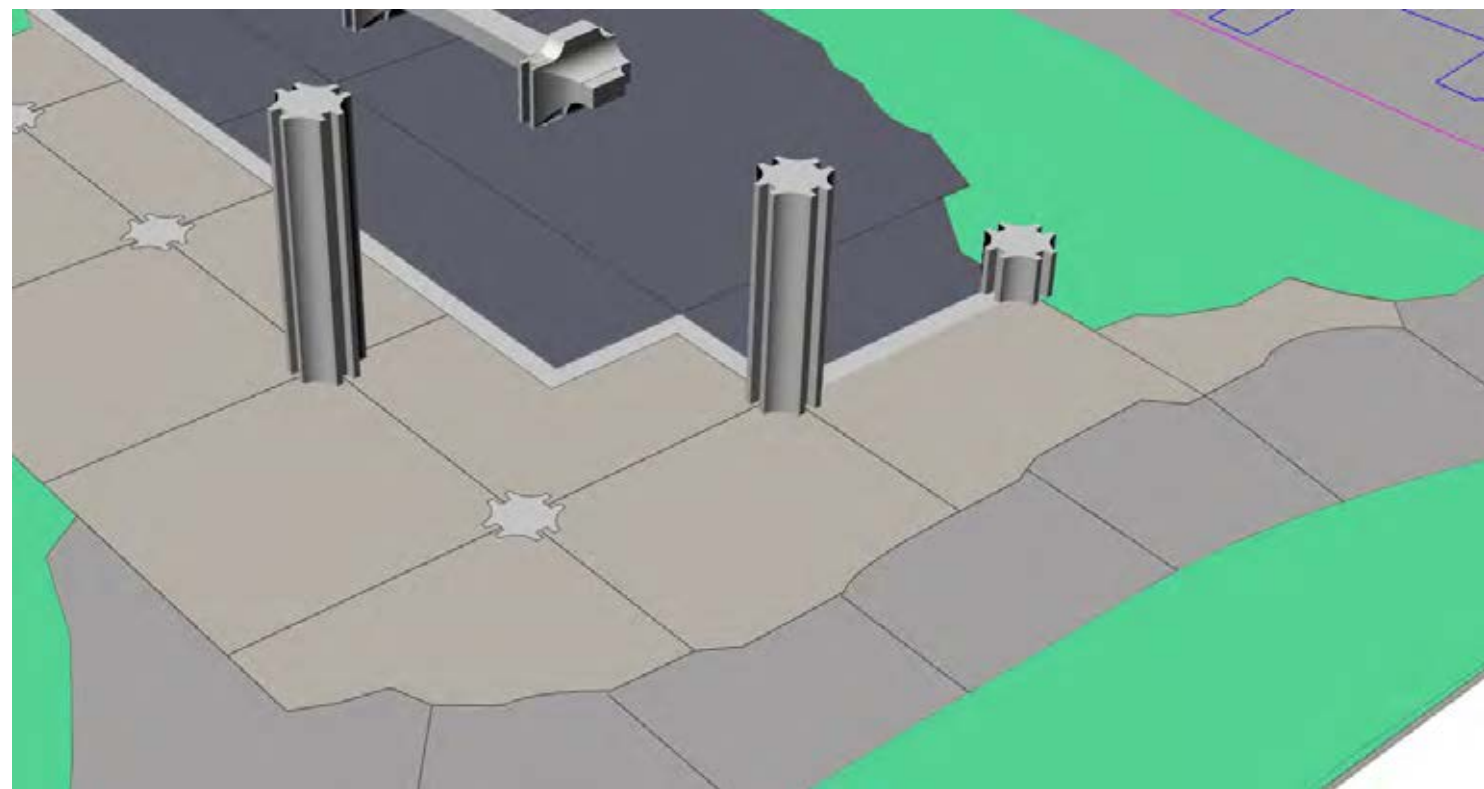
EXTRACTION

CONCRETE EDGE DETAILS



Transitions from municipal sidewalk to decorative cement work has an irregular edge in cement formwork to create a sense of fragmentation or archeological site-like quality.

Planter edges that do not fall on the cement joints have a similar irregular path, with the exception of driveways which have clear straight lines for visibility.



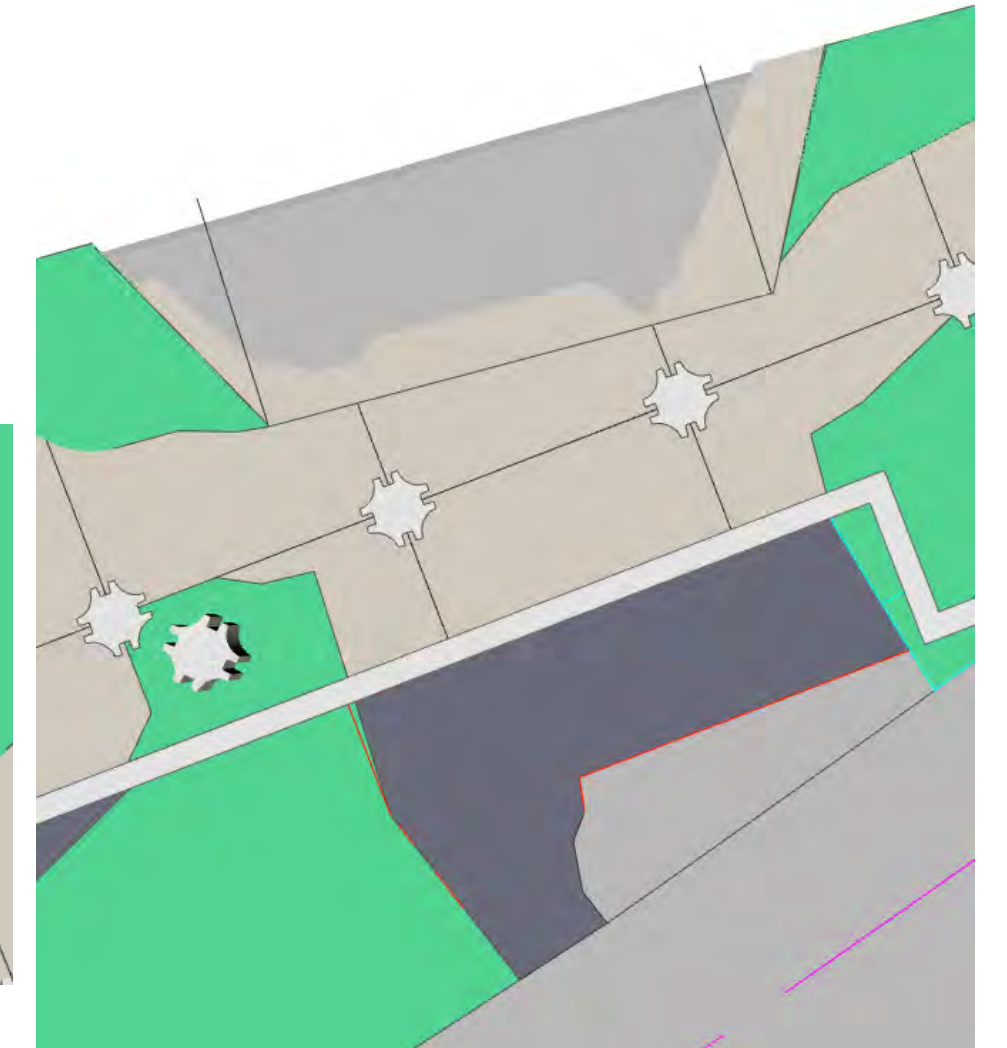
1



2



3



5



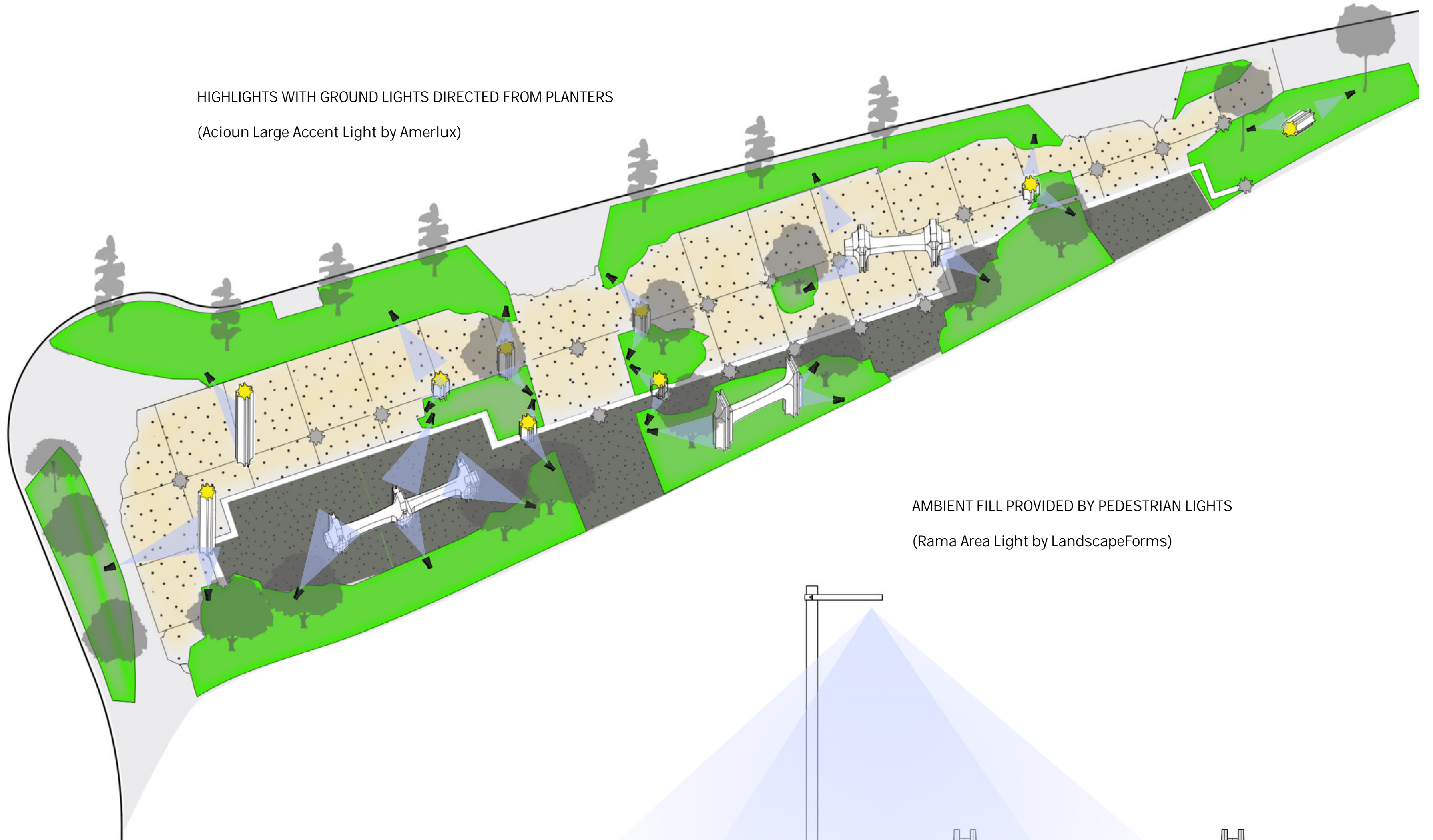
4

EXTRACTION

ART LIGHTING

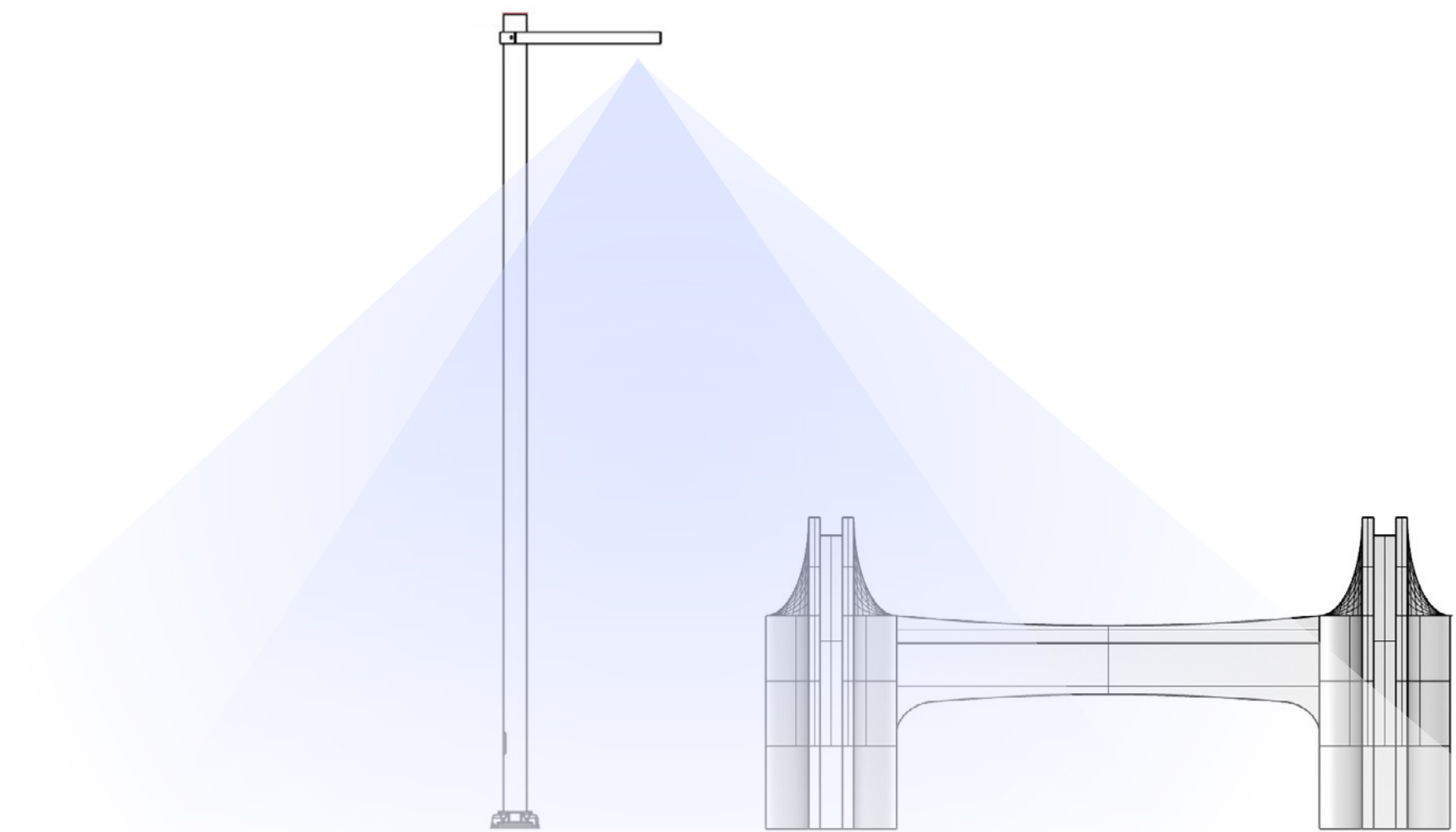
HIGHLIGHTS WITH GROUND LIGHTS DIRECTED FROM PLANTERS

(Acioun Large Accent Light by Amerlux)



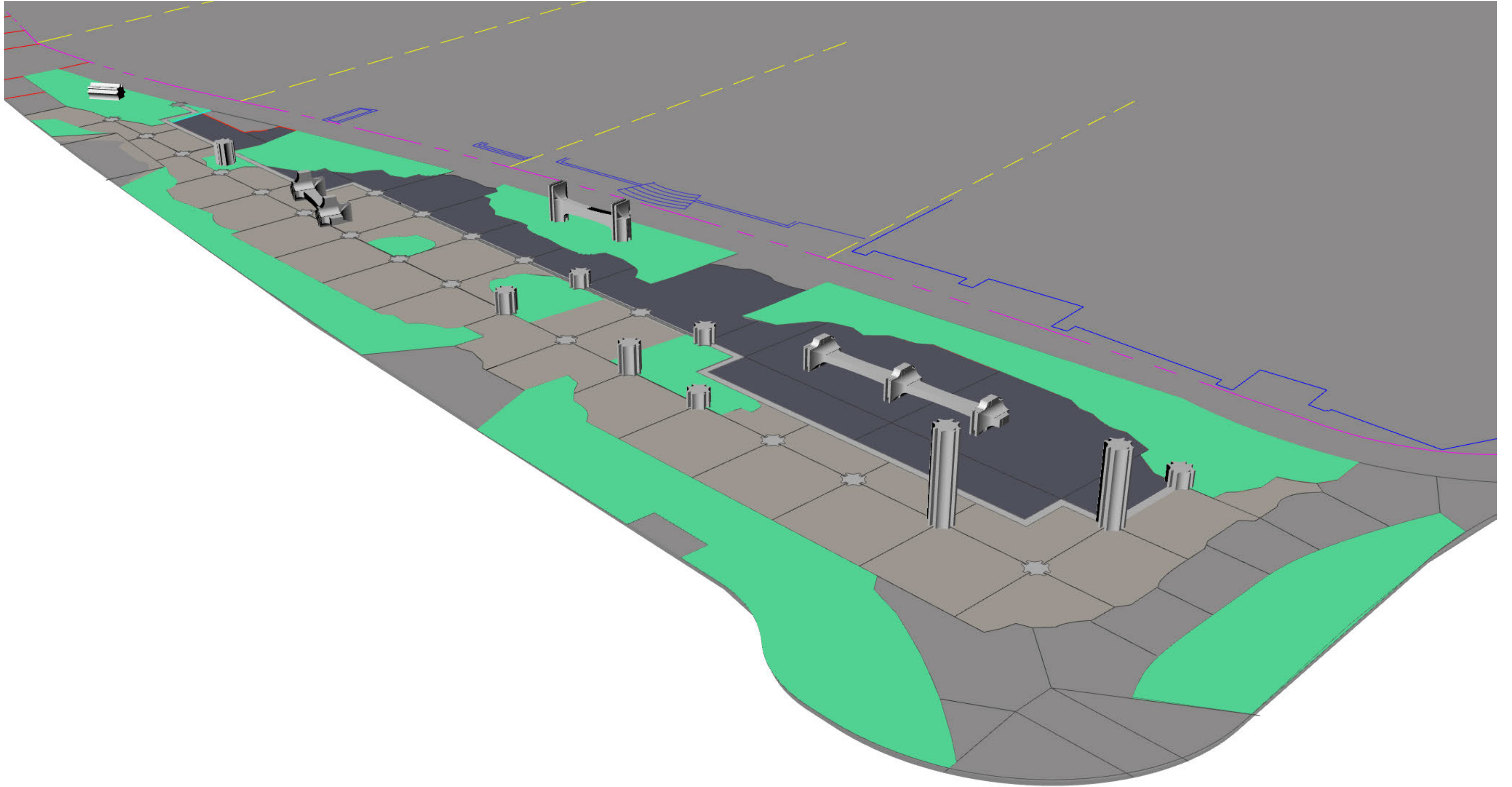
AMBIENT FILL PROVIDED BY PEDESTRIAN LIGHTS

(Rama Area Light by LandscapeForms)



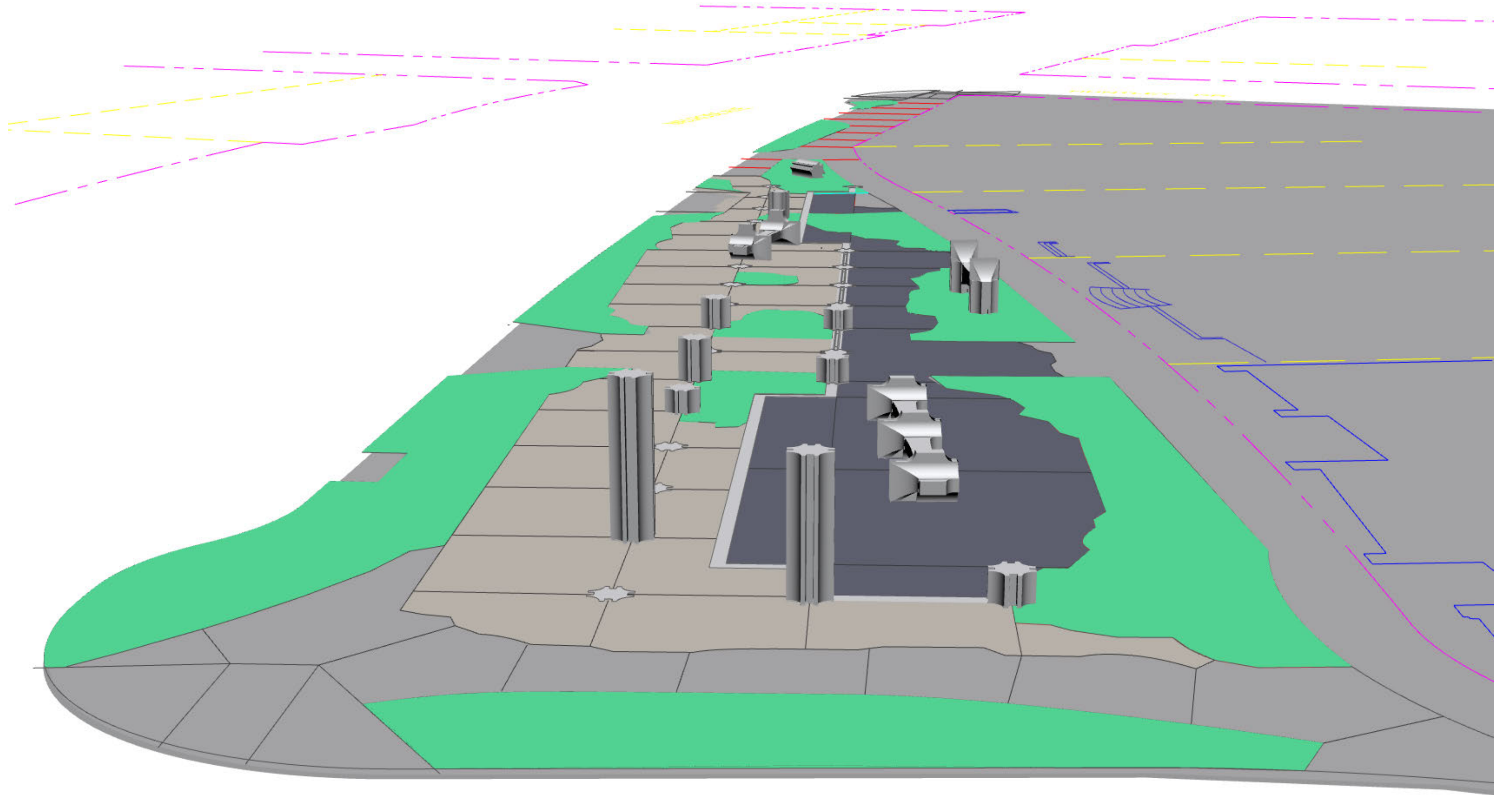
EXTRACTION

PERSPECTIVES



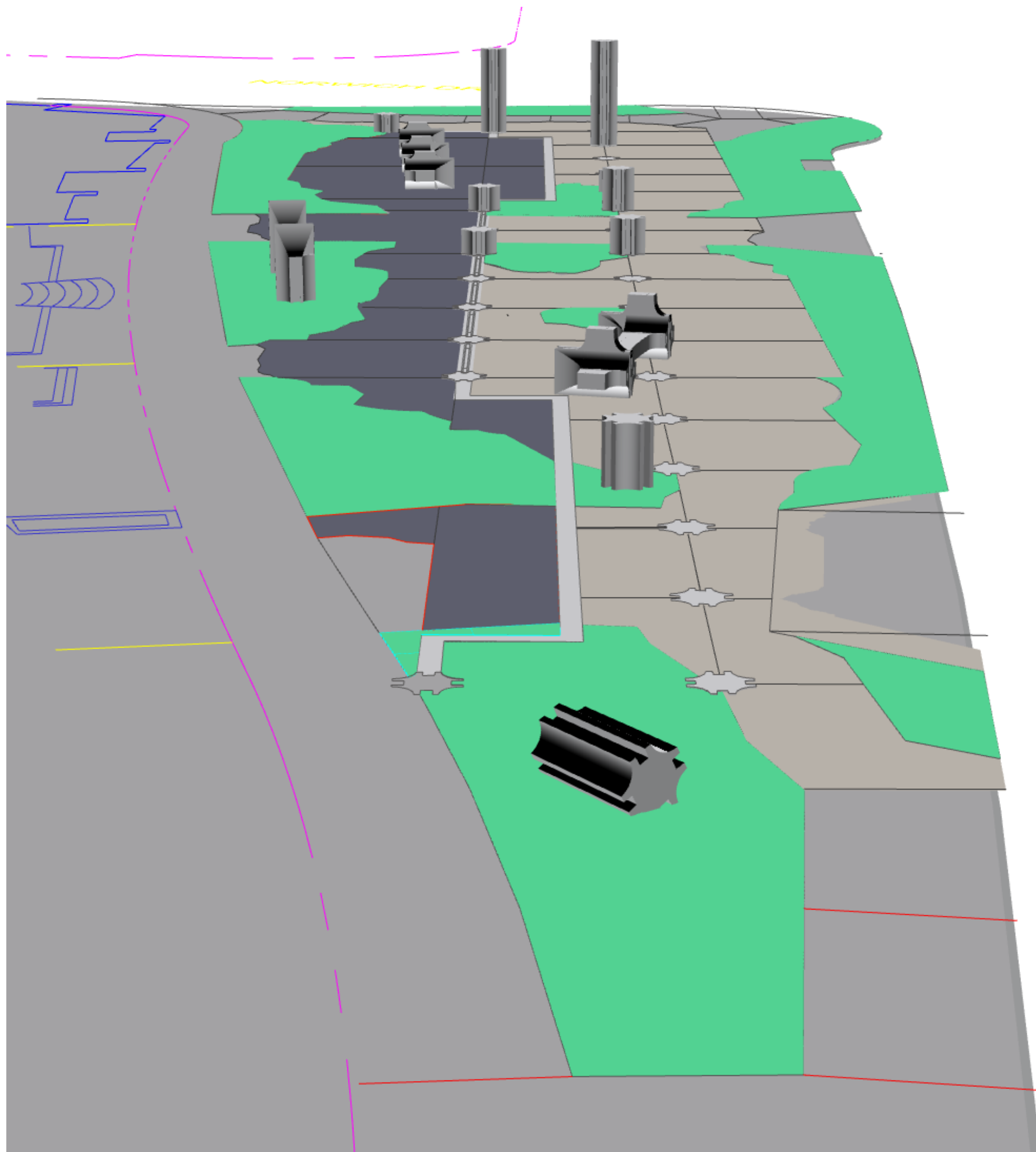
EXTRACTION

PERSPECTIVES



EXTRACTION

PERSPECTIVES





Norwich Gathering Space





Norwich Gathering Space





Norwich Gathering Space





Norwich Gathering Space





Norwich Gathering Space





Norwich Gathering Space





Norwich Gathering Space



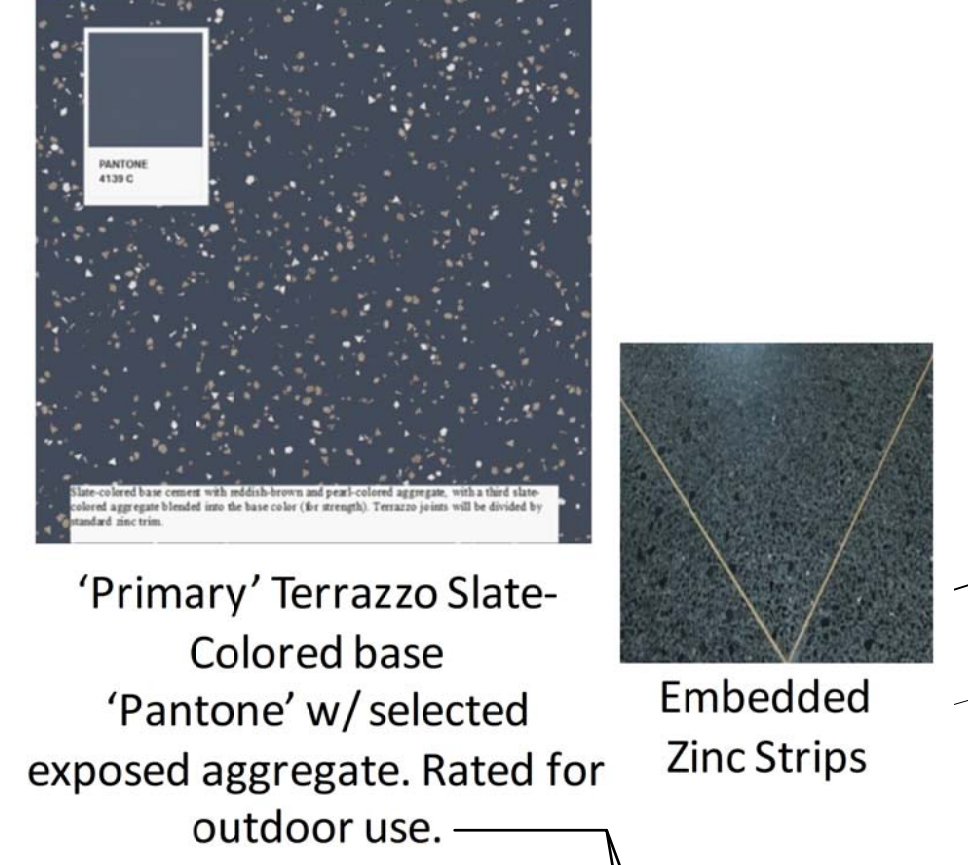


Norwich Gathering Space



INNER DECORATIVE TERRAZZO FINISH

OUTER DECORATIVE CONCRETE

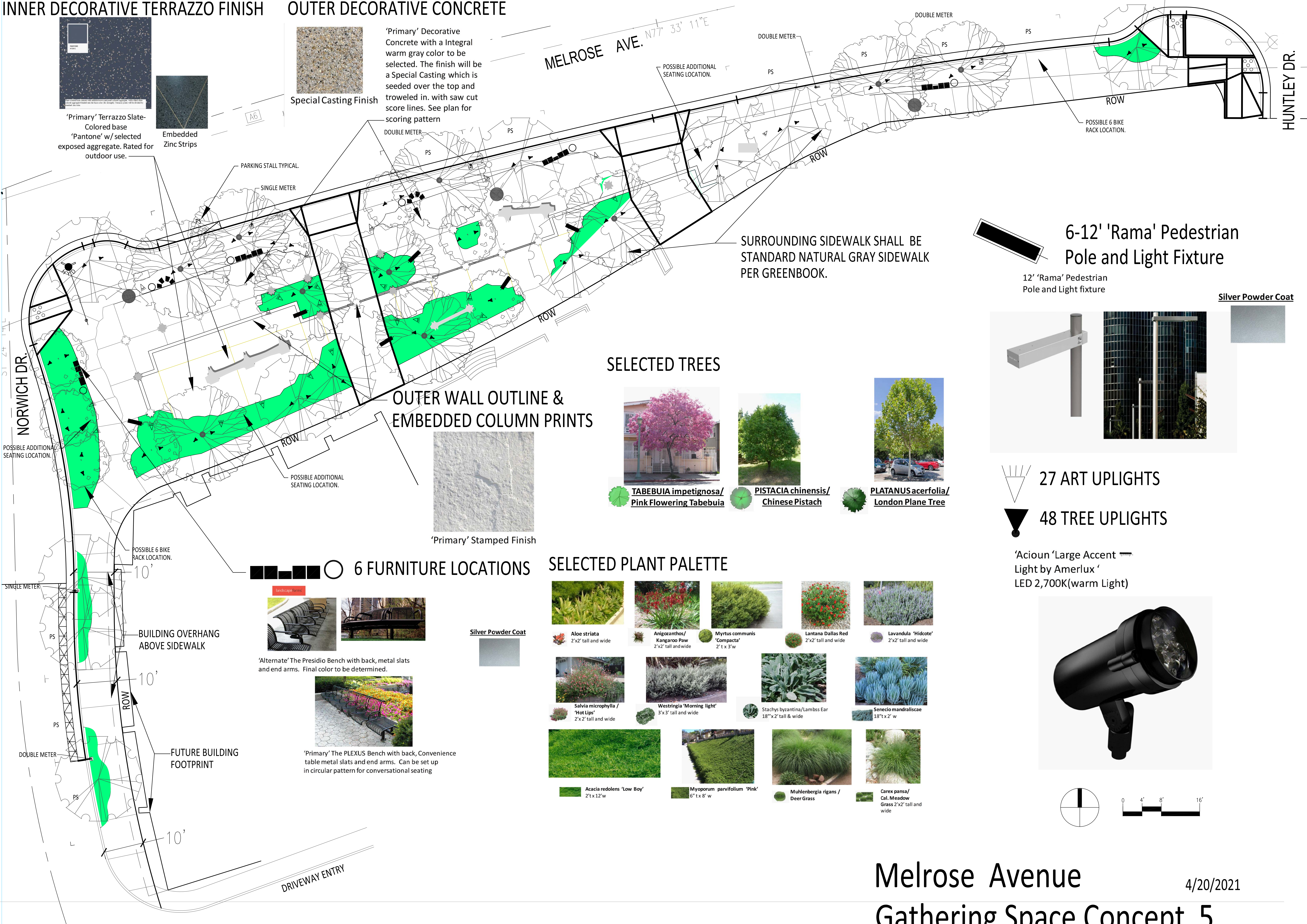


'Primary' Terrazzo Slate-Colored base 'Pantone' w/ selected exposed aggregate. Rated for outdoor use.



Special Casting Finish

'Primary' Decorative Concrete with an Integral warm gray color to be selected. The finish will be a Special Casting which is seeded over the top and troweled in, with saw cut score lines. See plan for scoring pattern



PARKING STALL TYPICAL

SINGLE METER

DOUBLE METER

DOUBLE METER

DOUBLE METER

ROW

HUNTLEY DR.

NORWICH DR.

MELROSE AVE. N77° 33' 11"E

POSSIBLE ADDITIONAL SEATING LOCATION.

POSSIBLE 6 BIKE RACK LOCATION.

POSSIBLE ADDITIONAL SEATING LOCATION.

POSSIBLE ADDITIONAL SEATING LOCATION.

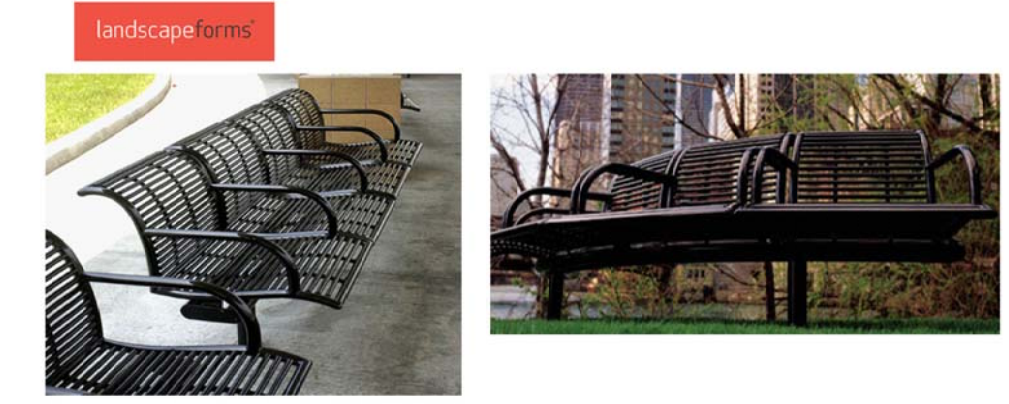
POSSIBLE 6 BIKE RACK LOCATION.

BUILDING OVERHANG ABOVE SIDEWALK

FUTURE BUILDING FOOTPRINT

DRIVEWAY ENTRY

6 FURNITURE LOCATIONS



'Alternate' The Presidio Bench with back, metal slats and end arms. Final color to be determined.



'Primary' The PLEXUS Bench with back, Convenience table metal slats and end arms. Can be set up in circular pattern for conversational seating

OUTER WALL OUTLINE & EMBEDDED COLUMN PRINTS



'Primary' Stamped Finish

SELECTED TREES



TABEBUIA impetiginosa/ Pink Flowering Tabebuia



PISTACIA chinensis/ Chinese Pistach



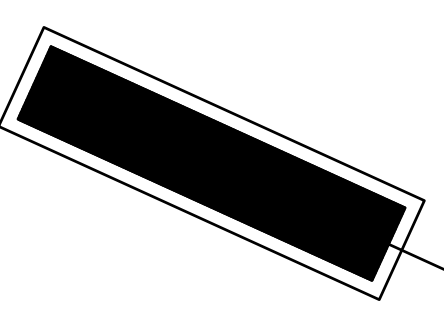
PLATANUS acerfolia/ London Plane Tree

SELECTED PLANT PALETTE

Aloe striata 2'x2' tall and wide	Anigozanthos/ Kangaroo Paw 2'x2' tall and wide	Myrtus communis 'Compacta' 2' x 3'w	Lantana Dallas Red 2'x2' tall and wide	Lavandula 'Hidcote' 2'x2' tall and wide
Salvia microphylla / 'Hot Lips' 2'x2' tall and wide	Westringia 'Morning light' 3'x3' tall and wide	Stachys byzantina/Lamb's Ear 18" x 2' tall & wide	Senecio mandraliscae 18" x 2' w	
Acacia redolens 'Low Boy' 2' x 12' w	Myoporum parvifolium 'Pink' 6" x 8' w	Muhlenbergia rigans / Deer Grass	Carex pansa / Cal. Meadow Grass 2'x2' tall and wide	

SURROUNDING SIDEWALK SHALL BE STANDARD NATURAL GRAY SIDEWALK PER GREENBOOK.

6-12' 'Rama' Pedestrian Pole and Light Fixture



12' 'Rama' Pedestrian Pole and Light fixture

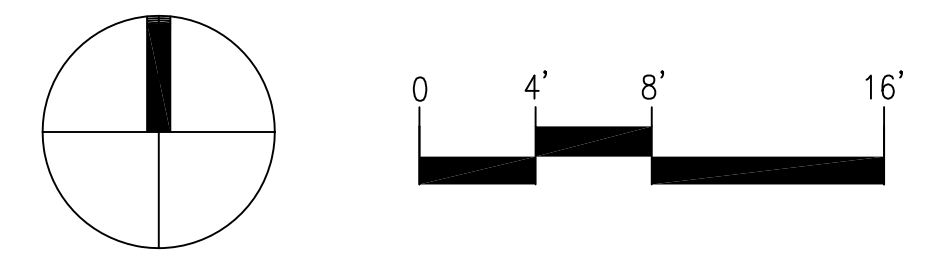
Silver Powder Coat



27 ART UPLIGHTS

48 TREE UPLIGHTS

'Acion 'Large Accent' Light by Amerlux ' LED 2,700K(warm Light)



SITE AMENITIES

landscapeforms®

Furniture



‘Alternate’ The Presidio Bench with back, metal slats and end arms. Final color to be determined.



PLEXUS

Product Data Sheet



Silver Powder Coat

There's a reason some award-winning design inventors. Please with imagination of designs.

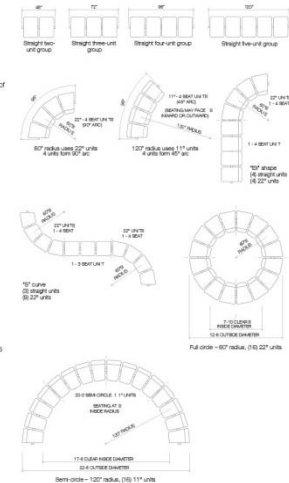


Plexus

- Plexus wire grid panel is constructed of 5/16" perimeter and reinforcement wires (on 2-1/2" centers), with 1/8" cross wires on 1/2" centers.
- Wire grid is welded into a frame formed of tubular steel that is 7/8" o.d., and has .120" wall thickness.
- Arms are constructed of tubular steel 7/8" o.d., .120" wall thickness.
- Tables have the same basic wire grid panel and are offset to align with front of backed seat.
- Receptacles are constructed with 7/8" diameter tubular steel rings at top and bottom of the grid panels.
- Litter receptacle lids are formed of spun metal, liners of polyethylene.
- 40% um interior panels are formed of fiberglass.
- Hardware for seats, tables, arms and horizontal tube sections is shipped with each order.
- Gaskets for freestanding supports are included.
- Hardware for anchoring supports is NOT included.
- Surfaces and wall mounted supports are drilled to accept up to 1/2" anchor bolt of non-combustible material.

Suggested Groupings

- Basic groupings can be arranged in nearly unlimited configurations.
- A few examples are shown on this page.
- Seats (with or without back) and tables may be interchanged in any combination in most of these examples.
- Standard curved shapes are 60° radius or 120° radius.
- For special applications, custom radius configurations are available. (Seats with backs not available for 60° radius; not available with radius smaller than 60°.



page 1 of 4

Landscape Forms, Inc. | 800.521.2548 | F. 260.381.3455 | 7800 E. Michigan Ave., Kalamazoo, MI 49004



‘Primary’ The PLEXUS Bench with back, Convenience table metal slats and end arms. Can be set up in circular pattern for conversational seating

NORWICH GATHERING SPACE

Date 11/19/2020



SITE AMENITIES

landscapeforms®

Pedestrian Lighting

12' 'Rama' Pedestrian Pole and Light fixture



Silver Powder Coat



City of West Hollywood
California 1984

NORWICH GATHERING SPACE



KABBARA
ENGINEERING



LRM
ASSOCIATES INC.

SITE AMENITIES

landscapeforms

Up Lighting Tree Canopies

'Acioun 'Large Accent
Light by Amerlux '
LED 2,700K(warm Light)

Satin Black Powder Coat

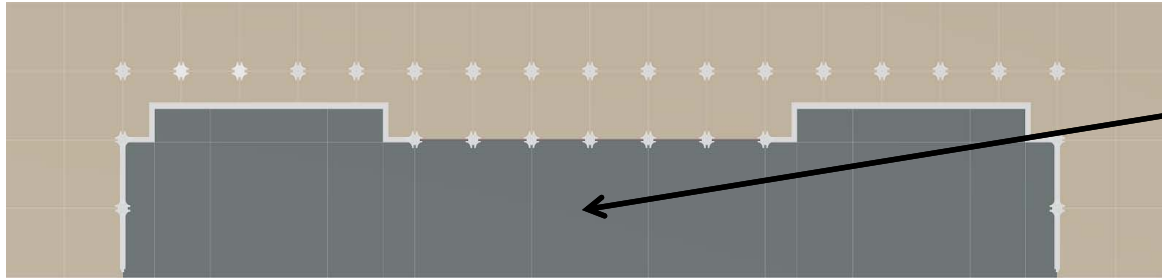


NORWICH GATHERING SPACE



SITE AMENITIES

Decorative Terrazzo Finish Concrete



Decorative Terrazzo Finish Concrete which is rated for out door use. See below for Score lines options. See plan for scoring pattern. 1,631 SQ. FT



'Primary' Terrazzo Slate-Colored base 'Pantone' w/ selected exposed aggregate. Rated for outdoor use.



Embedded Zinc Strips



'Alternate' Decorative Concrete with a integral cool gray color & sandpaper finish



Saw Cut Control Joints

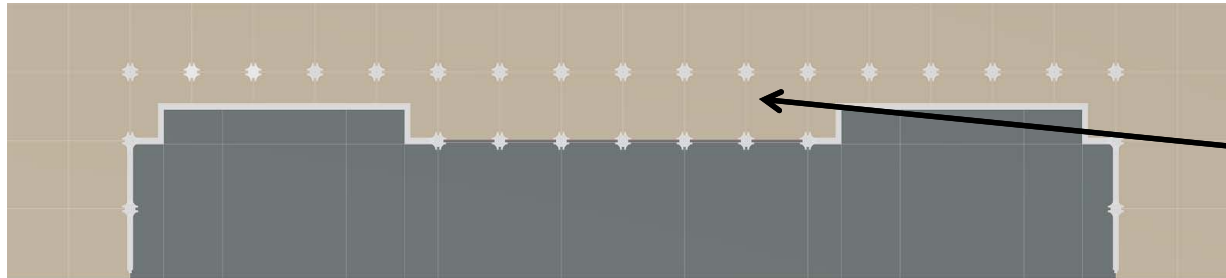


NORWICH GATHERING SPACE

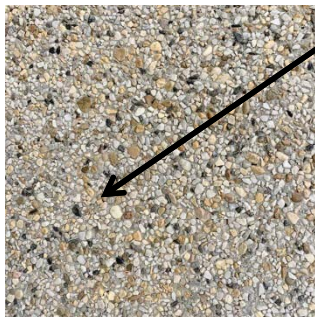


SITE AMENITIES

Outer Decorative Concrete



Outer Decorative Concrete Area
2,533 SQ. FT



Special Casting Finish

'Primary' Decorative Concrete with a Integral warm gray color to be selected. The finish will be a Special Casting which is seeded over the top and troweled in. with saw cut score lines. See plan for scoring pattern



Sandpaper finish

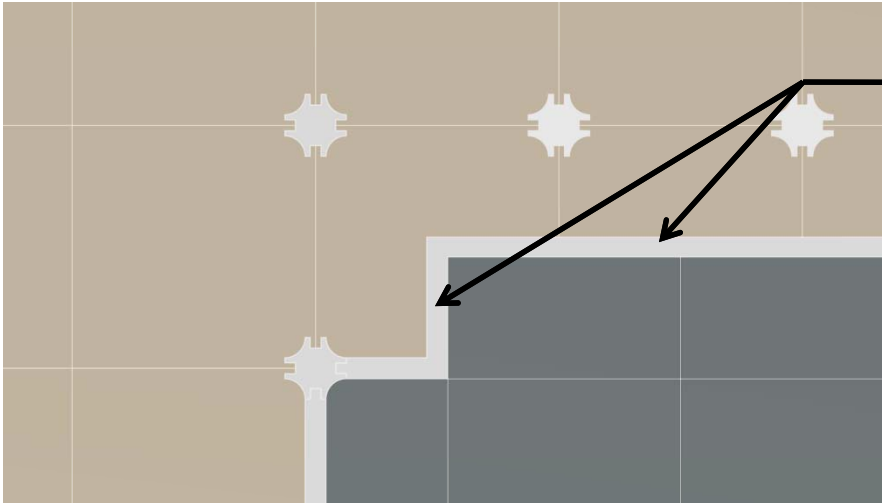
'Alternate' Decorative Concrete with a Integral warm gray color to be selected. The finish will be a Sandpaper finish and with saw cut score lines. See plan for scoring pattern.



NORWICH GATHERING SPACE

SITE AMENITIES

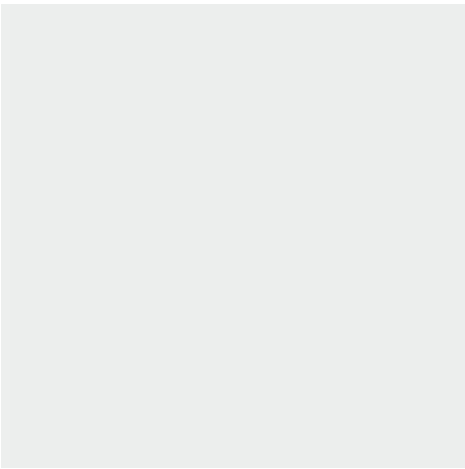
Outer Wall Outline



- “Wall” outline
- Neutral tone
 - (Natural gray
 - Concrete)



‘Primary’ Stamped Finish



‘Alternate’ Sand paper Finish

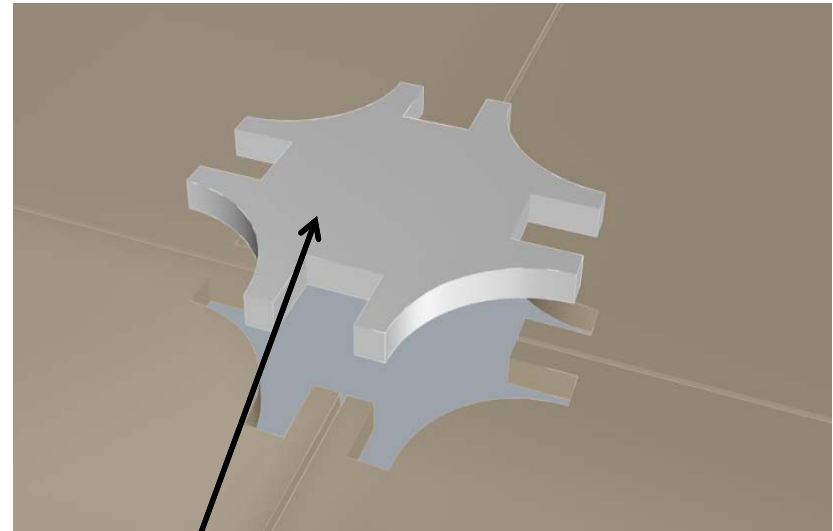
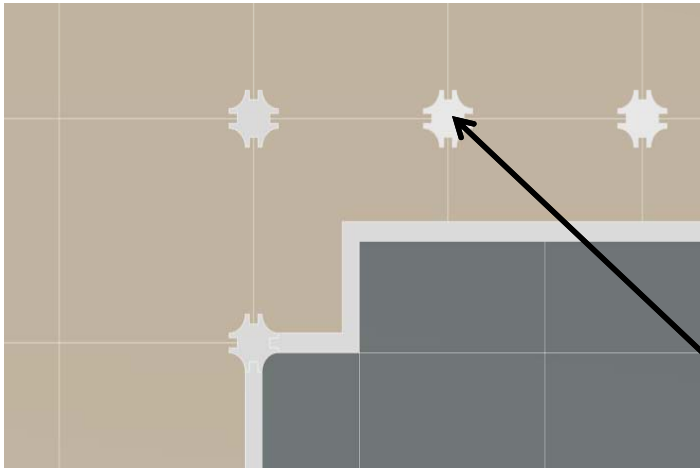


NORWICH GATHERING SPACE



SITE AMENITIES

Embedded Casted Concrete Column Footprints



Column footprint in cast concrete

- Neutral tone, Match wall ruin
- Stamped or sandpaper finish (See Wall Outline Slide)



NORWICH GATHERING SPACE



PR DECORATIVE TERRAZZO FINISH

OUTER DECORATIVE CONCRETE



'Primary' Terrazzo Slate-Colored base 'Pantone' w/ selected exposed aggregate. Rated for outdoor use.



Embedded Zinc Strips



Special Casting Finish

'Primary' Decorative Concrete with an Integral warm gray color to be selected. The finish will be a Special Casting which is seeded over the top and troweled in, with saw cut score lines. See plan for scoring pattern

MELROSE AVE. N77° 33' 11"E

METERS TYP.



SURROUNDING SIDEWALK SHALL BE STANDARD NATURAL GRAY SIDEWALK PER GREENBOOK.

6-12' 'Rama' Pedestrian Pole and Light Fixture

12' 'Rama' Pedestrian Pole and Light fixture

Silver Powder C



SELECTED TREES



TABEBUIA impetiginosa/
Pink Flowering Tabebuia



PISTACIA chinensis/
Chinese Pistach



PLATANUS acerfolia/
London Plane Tree

OUTER WALL OUTLINE & EMBEDDED COLUMN PRINTS



27 ART UPLIGHTS

Mediterranean Plant Palette



Aloe striata
2'x2' tall and wide



**Anigozanthos/
Kangaroo Paw**
2'x2' tall and wide



**Myrtus communis
'Compacta'**
2' t x 3'w



Lantana Dallas Red
2'x2' tall and wide



Lavandula 'Hidcote'
2'x2' tall and wide



**Salvia microphylla /
'Hot Lips'**
2'x 2' tall and wide



Westringia 'Morning light'
3'x 3' tall and wide



Stachys byzantina/Lamb's Ear
18" x 2' tall & wide



Senecio mandraliscae
18"t x 2' w



Acacia redolens 'Low Boy'
2't x 12'w



Myoporum parvifolium 'Pink'
6" t x 8' w



**Muhlenbergia rigans /
Deer Grass**



**Carex pansa/
Cal. Meadow
Grass**
2'x2' tall and wide



NORWICH GATHERING SPACE

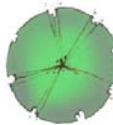


SITE AMENITIES

Selected Trees



TABEBUIA impetignosa/
Pink Flowering Tabebuia



PISTACIA chinensis/
Chinese Pistach

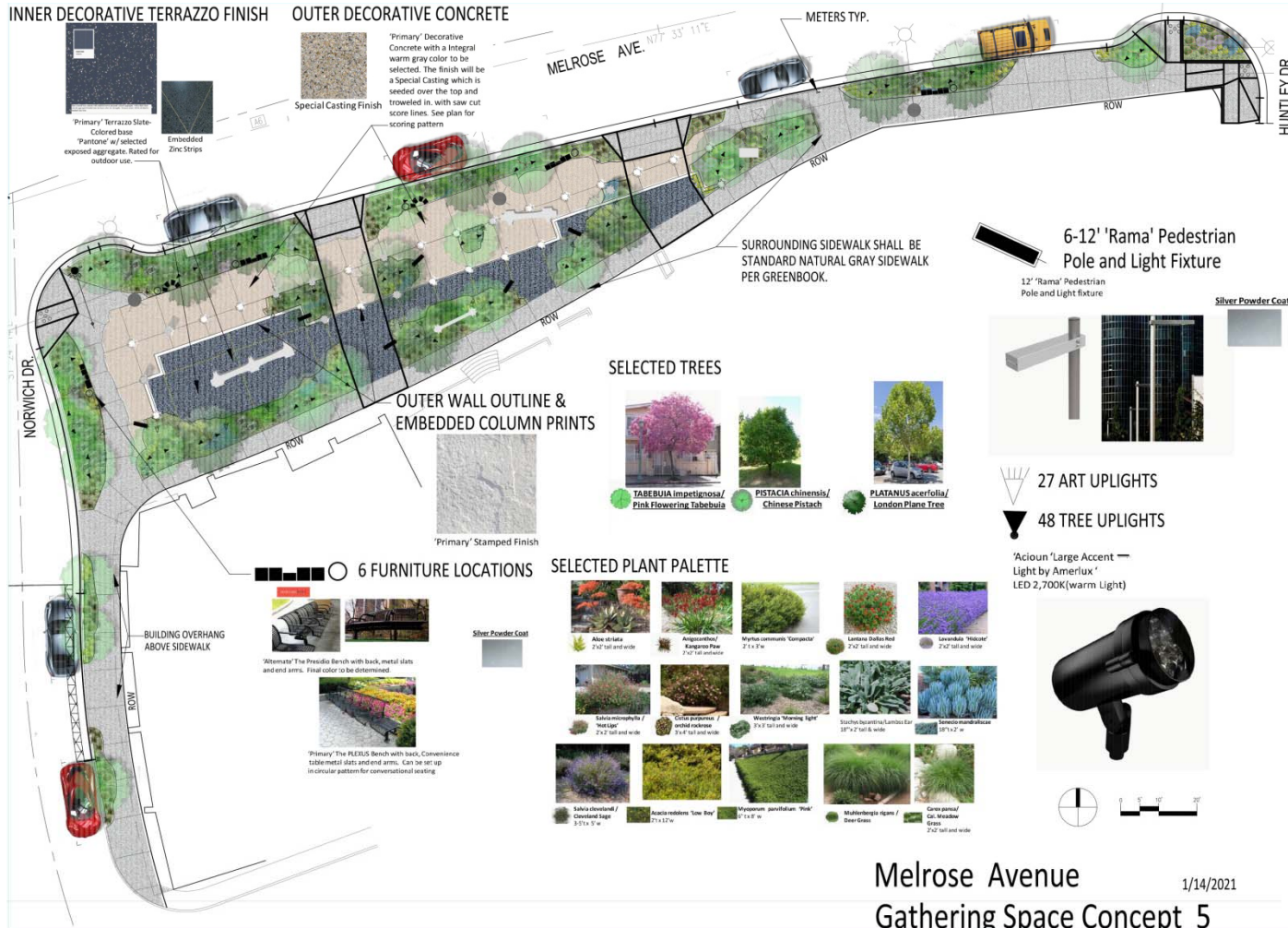


PLATANUS acerfolia/
London Plane Tree



Norwich Gathering Space





Norwich Gathering Space



Next Steps

- Summer 2021
 - Melrose Gathering Place Additional Outreach
 - Melrose Gathering Place Art Purchase
 - Beverly/Bonner Gathering Place Concept Outreach
- August 2021 Utility Undergrounding Construction Begins
 - (Melrose, Almont, & La Peer)
- Early 2022
 - Melrose Streetscape Construction Begins
 - Beverly/Bonner Gathering Place Final Design



DESIGN DISTRICT

STREETSCAPE & UNDERGROUNDING PROJECT

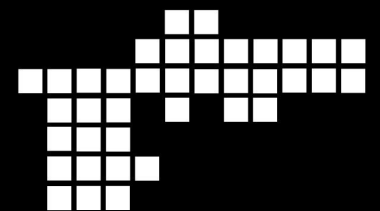
Rachel Dimond

Senior Planner

rdimond@weho.org

323.848.6486

www.weho.org/designdistrict



City of West Hollywood
California 1984