

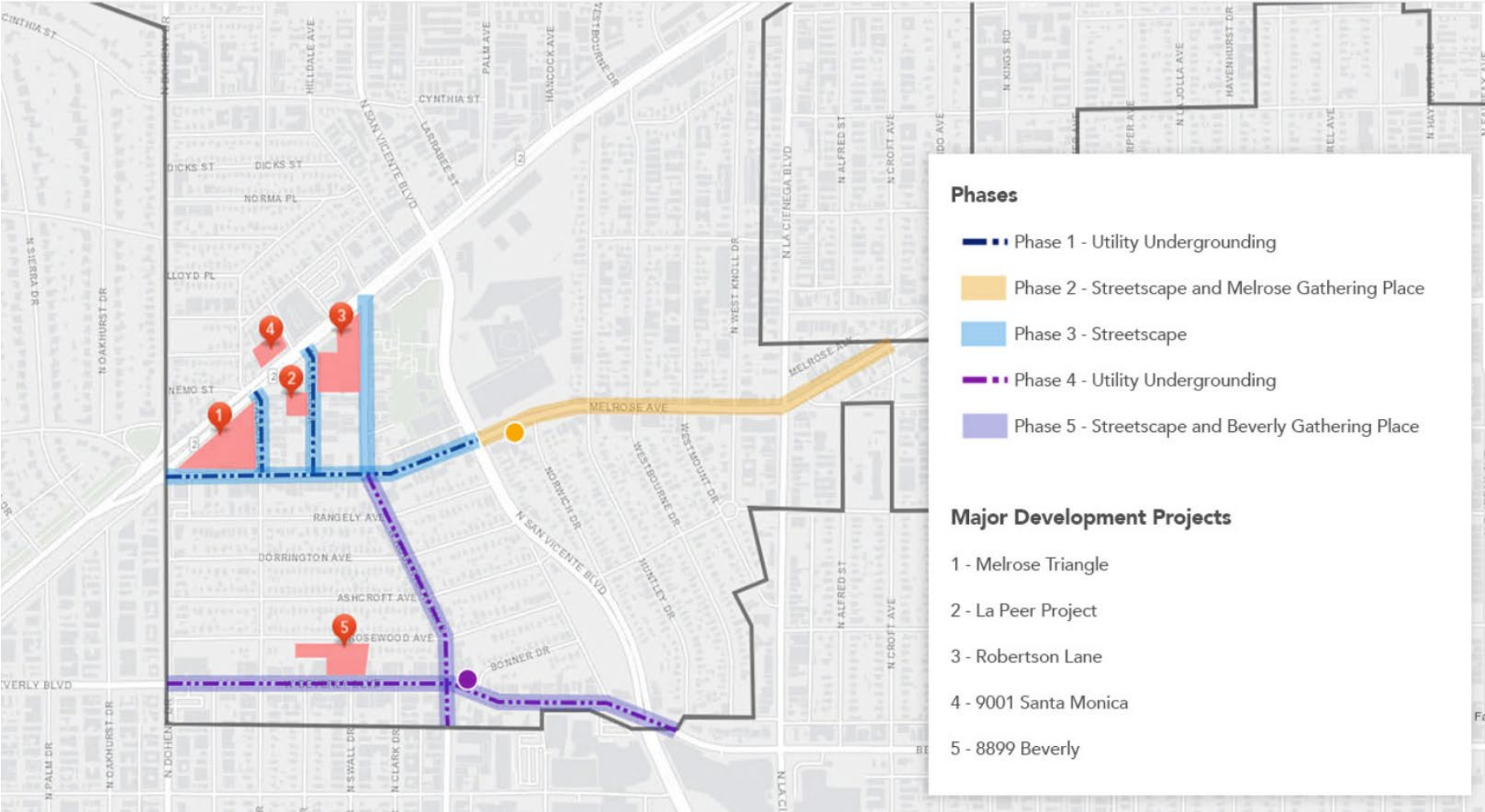


## Norwich Gathering Space



# Design District Phases

Design District Streetscape Project, Gathering Spaces & Utility Undergrounding



# Streetscape Project Timeline

Phase	Project	Construction Dates
1	Utility Undergrounding - Melrose west of San Vicente	May 2021 to December 2021
	Utility Undergrounding - La Peer & Almont	
2	Streetscape Improvements - Melrose from San Vicente Blvd to Croft Ave.	All of 2022
	Gathering Space - Melrose Ave. at Norwich Dr.	
3	Streetscape Improvements Melrose Ave (San Vicente Blvd. to Doheny), La Peer Dr. (from Santa Monica Blvd. to Melrose Ave.), Almont Dr. (Santa Monica Blvd. to Melrose Ave.) & Robertson from (Melrose Ave to Santa Monica Blvd.)	All of 2023
4	Utility Undergrounding - Beverly Blvd E. to W. City Limit & Robertson south of Melrose	All of 2024
5	Streetscape Improvements - Beverly Blvd & Robertson south of Melrose	All of 2025
	Gathering Space - Beverly Blvd. at Bonner Dr.	

Estimated Cost \$35 Million

## Gathering Places in the Design District

- City identified three spaces having room to create “gathering places” for community
- Bonner Gathering Place (at Beverly and Robertson) is currently parking lot
- Melrose at Norwich is currently sidewalk and diagonal parking
- Robertson North could utilize street itself as public space





© 2021 Google

© 2021 Google

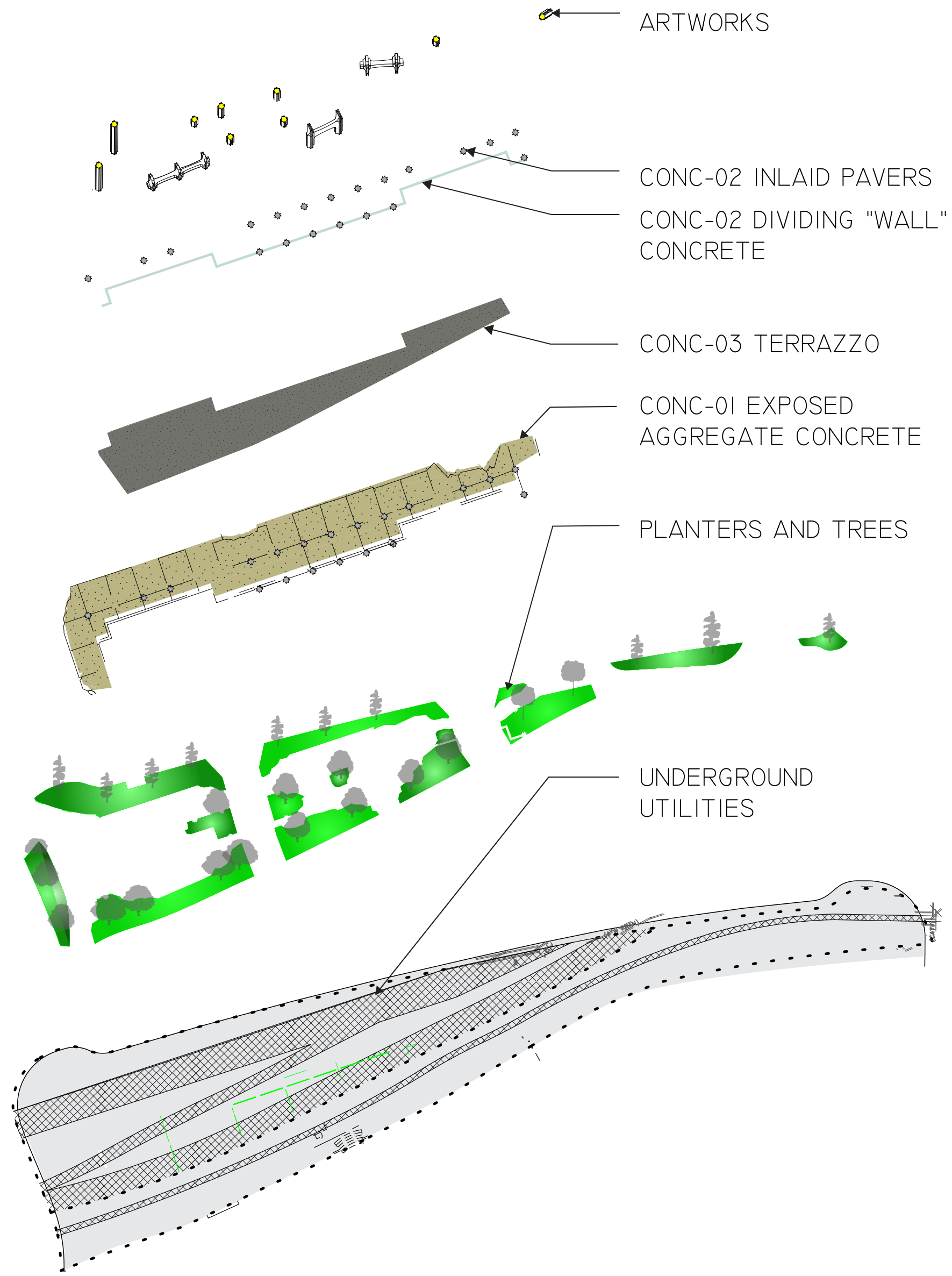
SAGE'S

© 2021 Google

Google

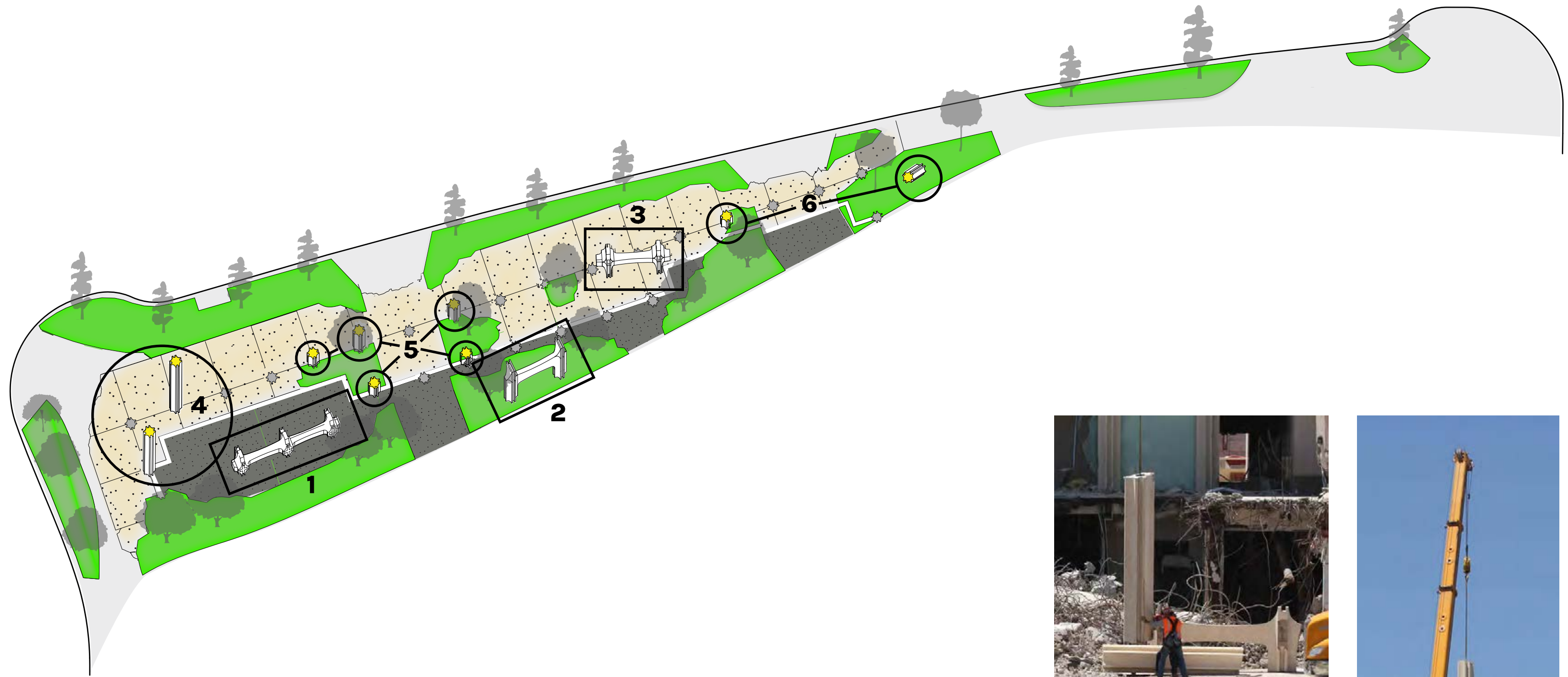
# EXTRACTION

EXPLODED SITE VIEW

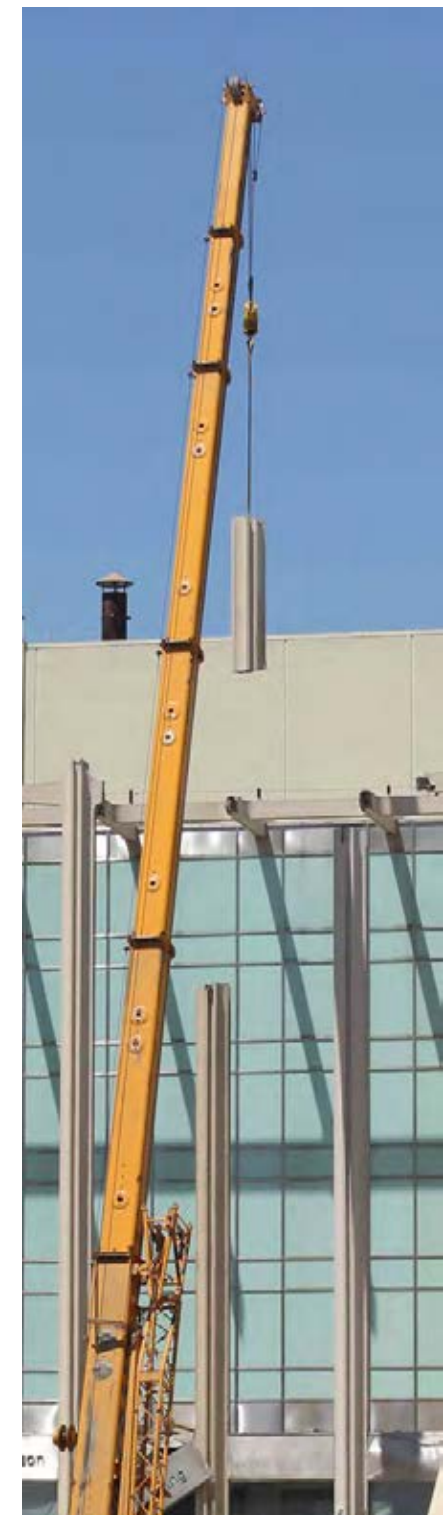


# EXTRACTION

ARTWORK LOCATIONS AND SOURCE MATERIAL



4



5-6



1



2

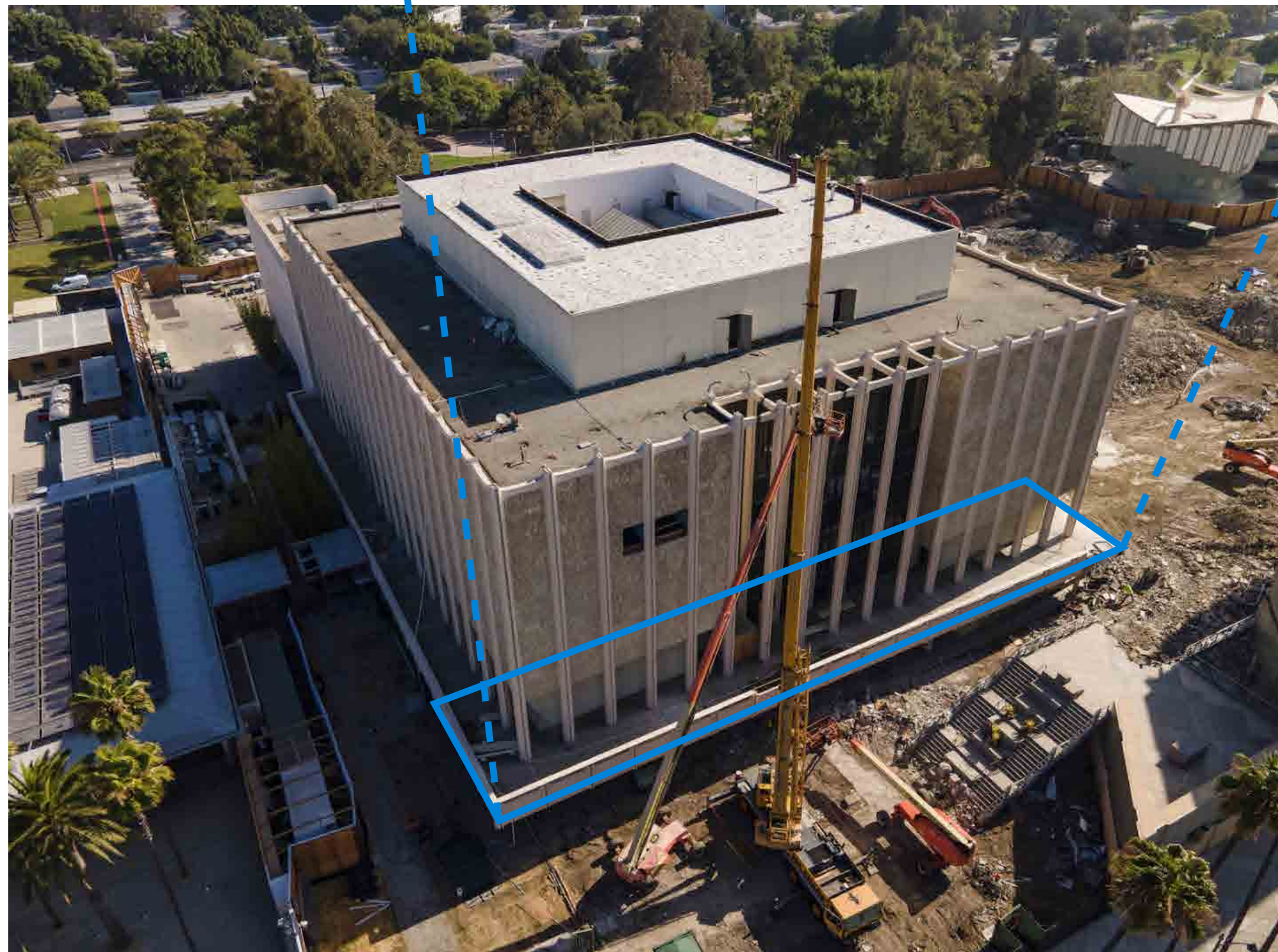
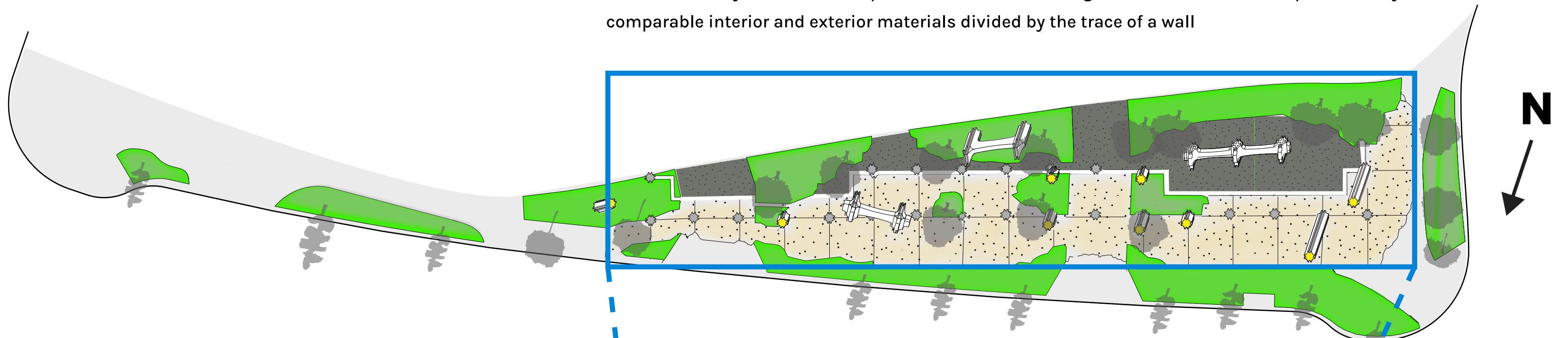


3

# EXTRACTION

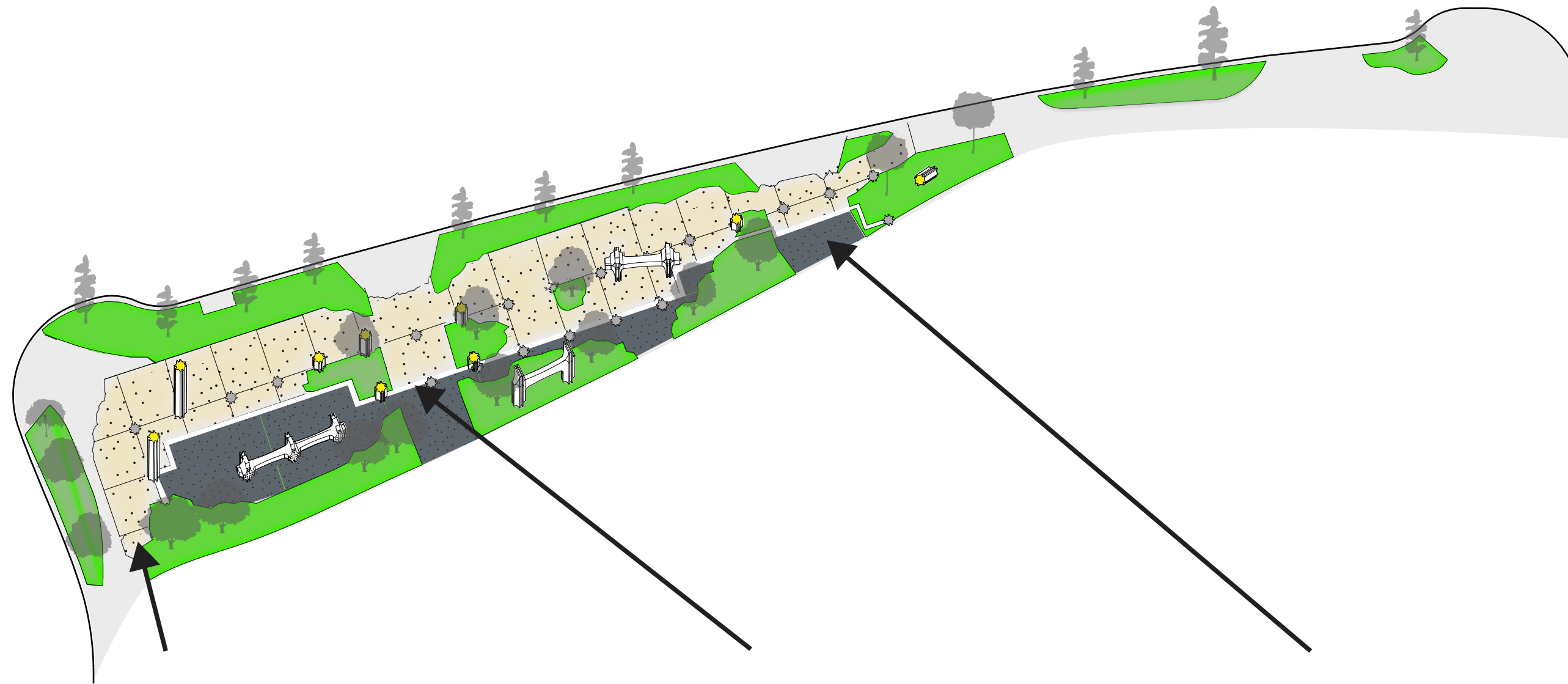
GROUND MATERIAL CONCEPT AND SOURCE REFERENCE

Cement work layout is a scale replica of location where fragments were extracted, represented by comparable interior and exterior materials divided by the trace of a wall



# EXTRACTION

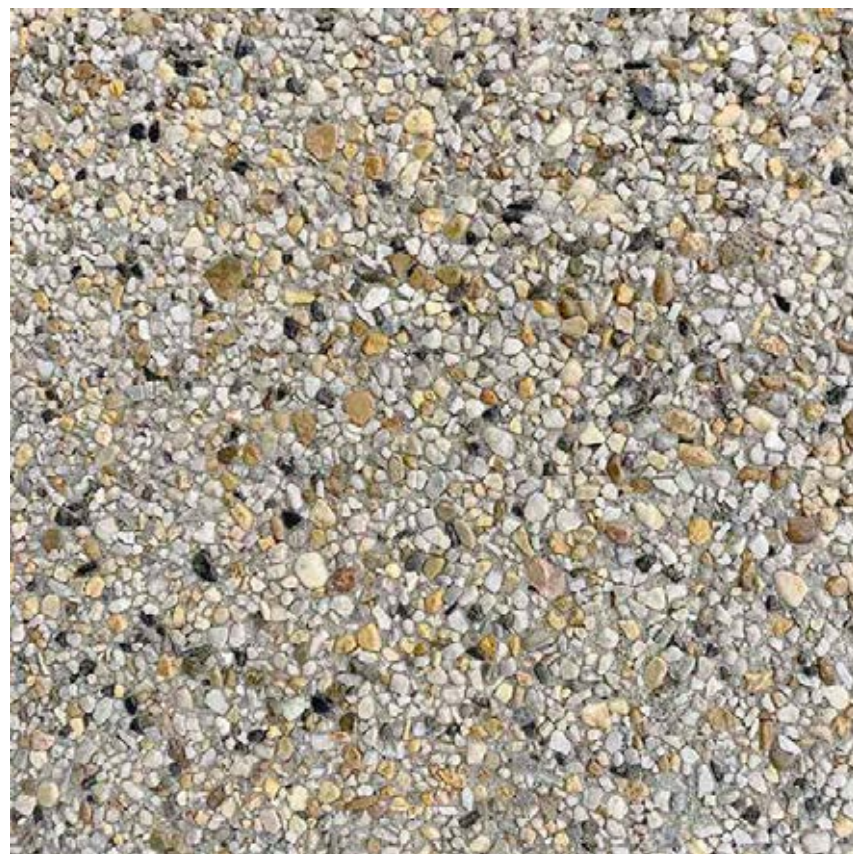
GROUND MATERIALS (OPTION A: PREMIUM)



EXTERIOR PLAZA (CONC-01)

TRACE OF A WALL (CONC-02)

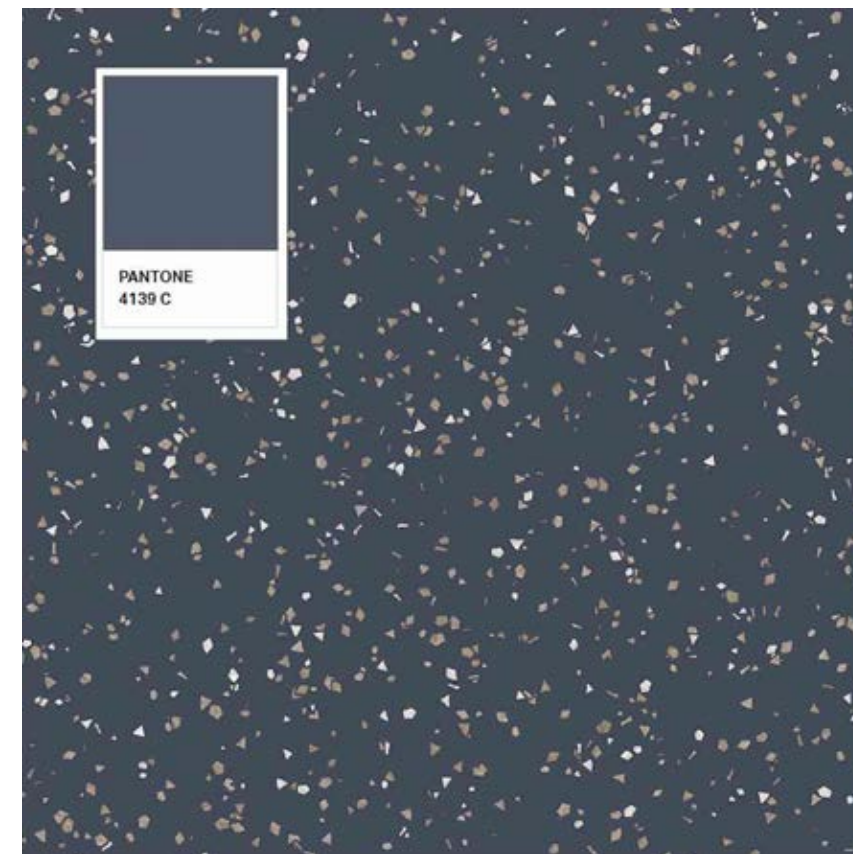
MUSEUM INTERIOR (CONC-03)



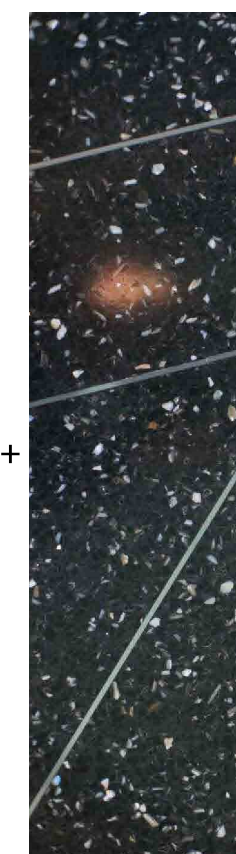
WARM BROWN CONCRETE  
EXPOSED AGGREGATE FINISH



WHITE/GREY CONCRETE  
WITH STAMPED TEXTURE FINISH



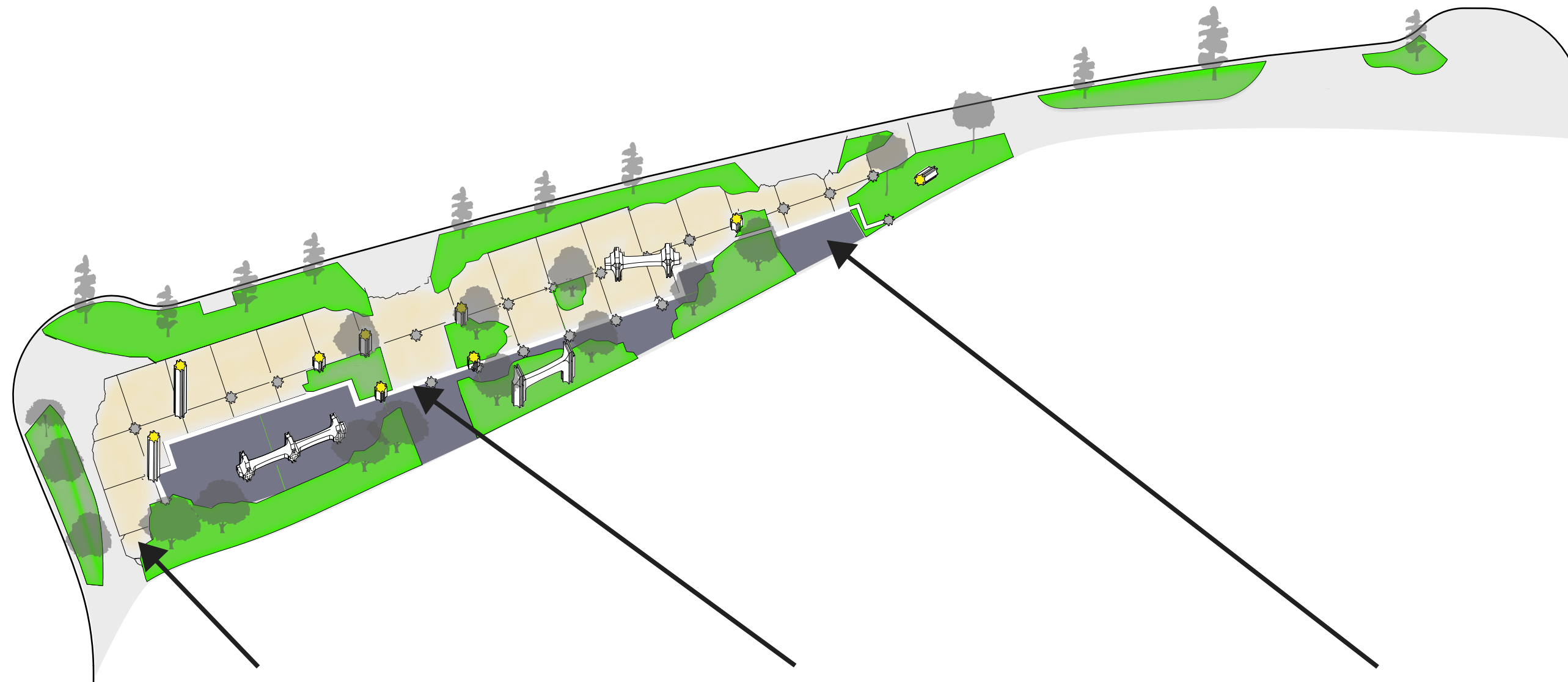
COOL TERRAZZO  
SLATE-COLORED MATRIX (PANTONE 4139 C)  
PEARLESCENT AND RED/BROWN MARBLE AGGREGATE



ZINC STRIPS

# EXTRACTION

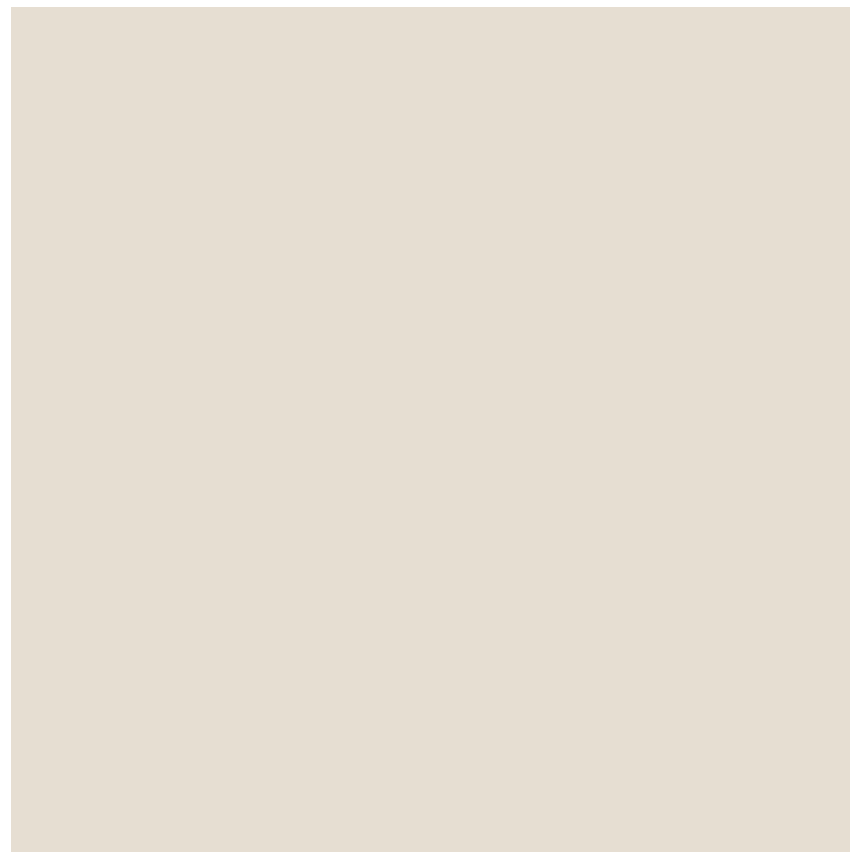
GROUND MATERIALS (OPTION B: BUDGET)



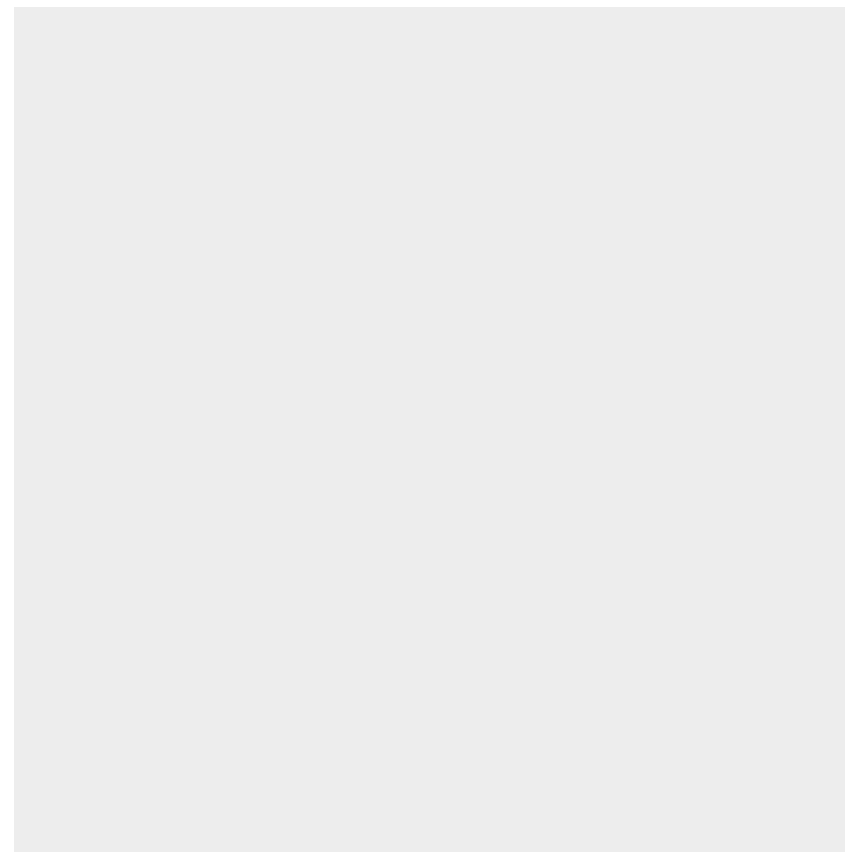
EXTERIOR PLAZA (CONC-01)

TRACE OF A WALL (CONC-02)

MUSEUM INTERIOR (CONC-03)



WARM BEIGE CONCRETE  
(C=9%, M=10%, Y=15%, K=0%)  
SANDPAPER FINISH



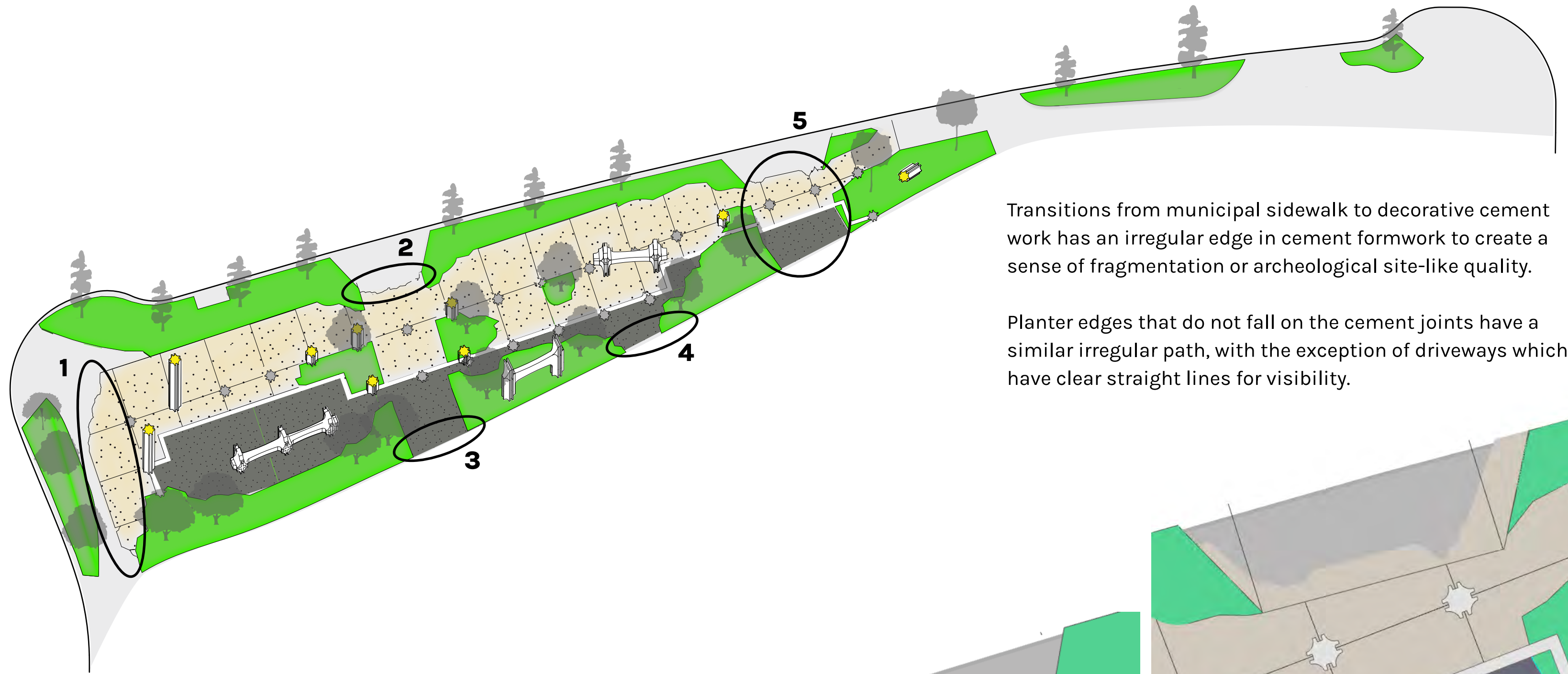
WHITE/GREY CONCRETE  
(C=6%, M=4%, Y=4%, K=0%)  
SANDPAPER FINISH



SLATE-COLORED CONCRETE  
(C=58%, M=50%, Y=35%, K=7%)  
SANDPAPER FINISH

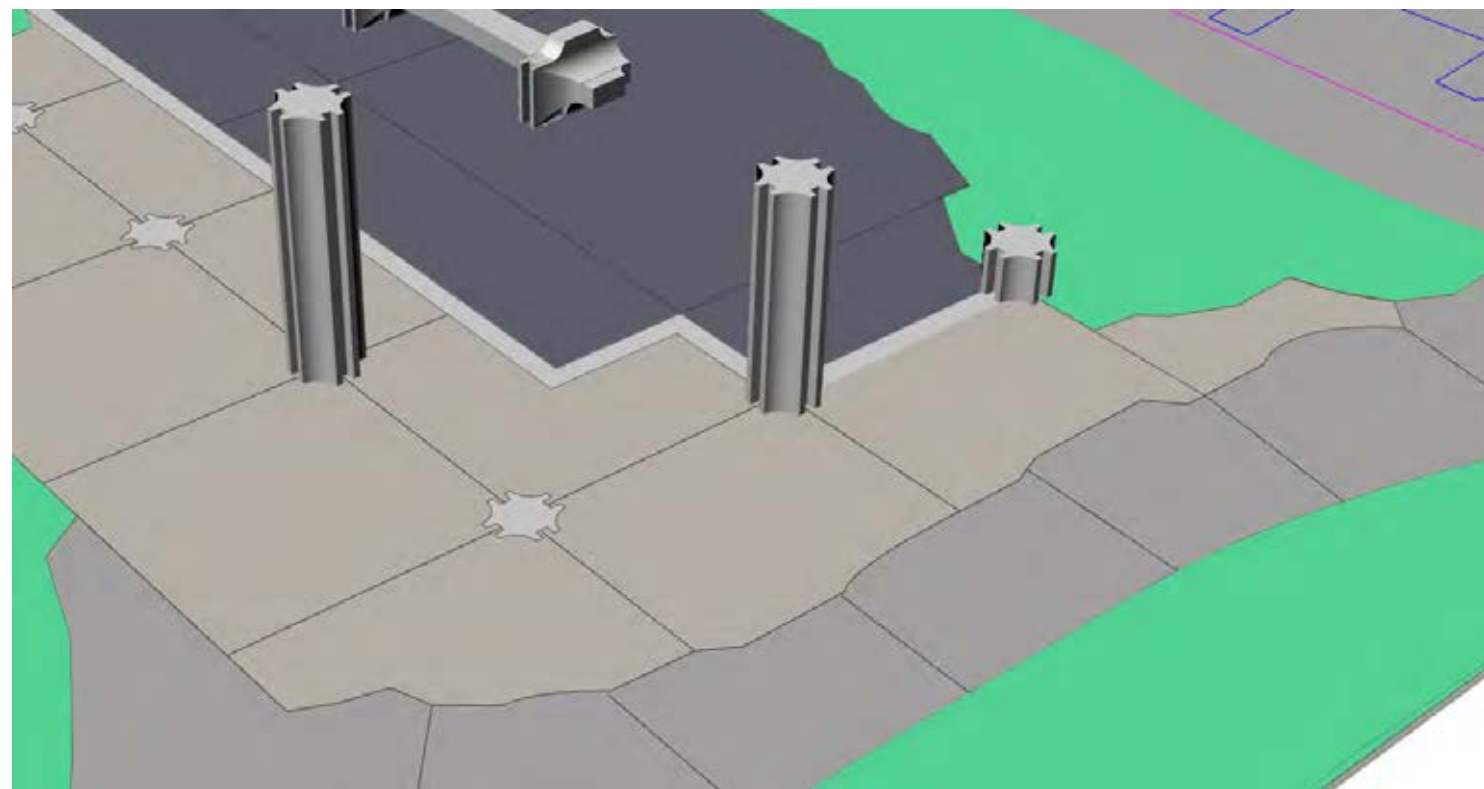
# EXTRACTION

## CONCRETE EDGE DETAILS



Transitions from municipal sidewalk to decorative cement work has an irregular edge in cement formwork to create a sense of fragmentation or archeological site-like quality.

Planter edges that do not fall on the cement joints have a similar irregular path, with the exception of driveways which have clear straight lines for visibility.



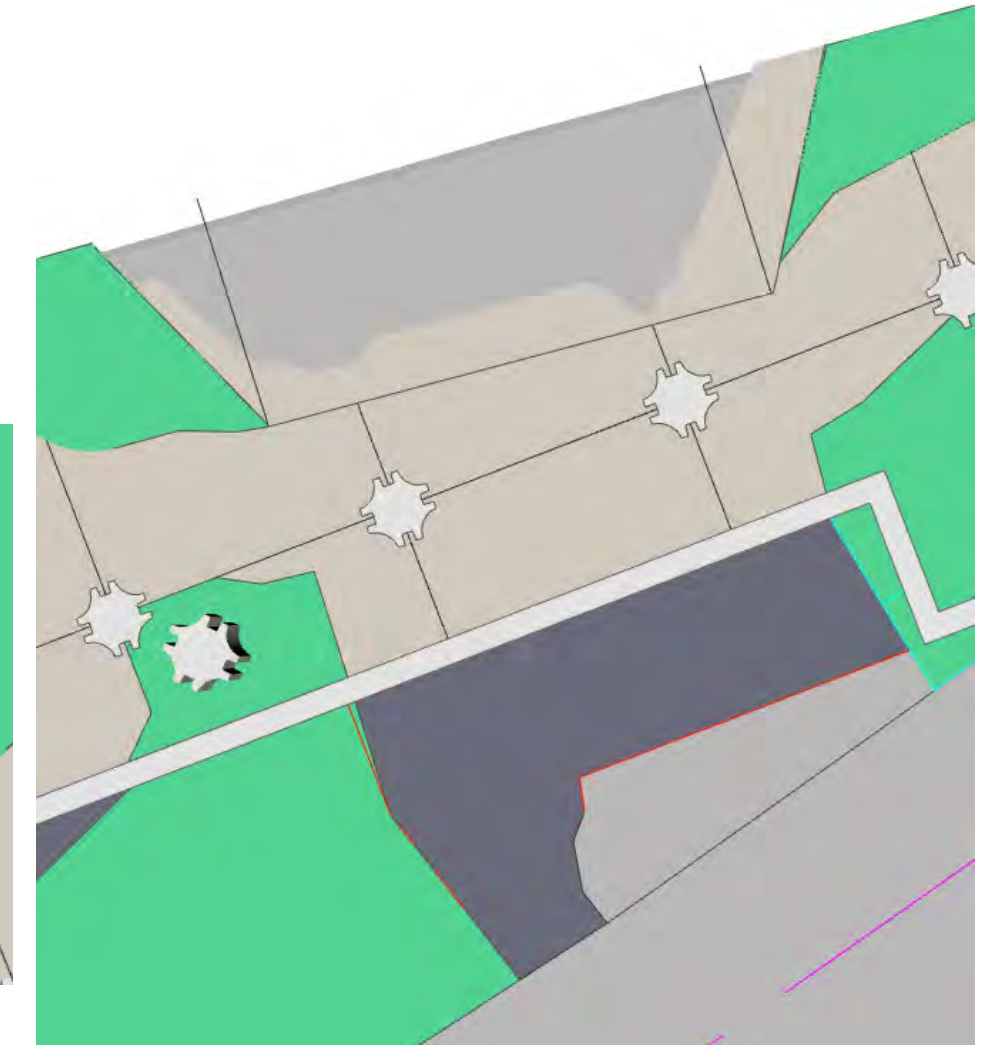
1



2



3



5



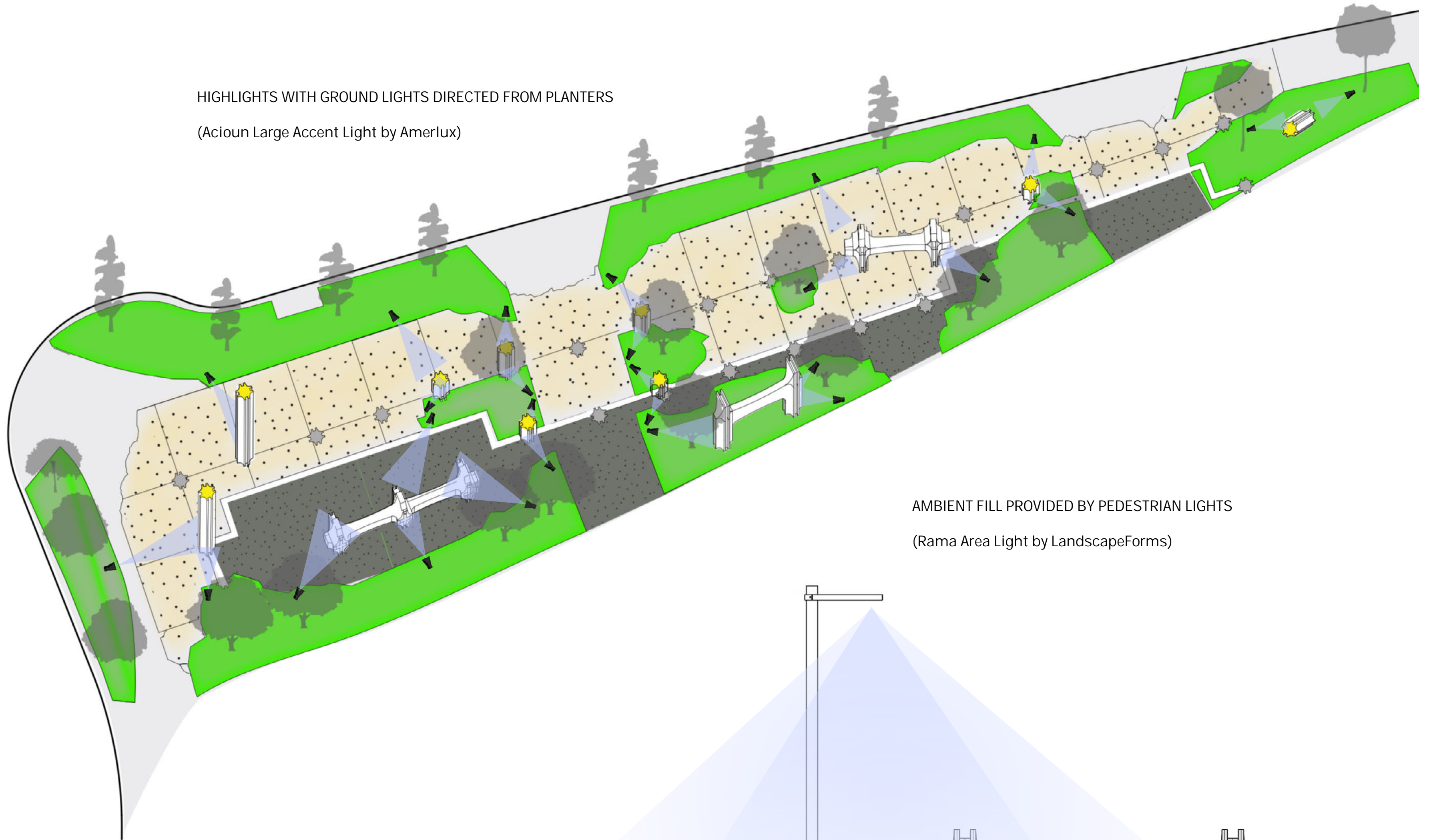
4

# EXTRACTION

ART LIGHTING

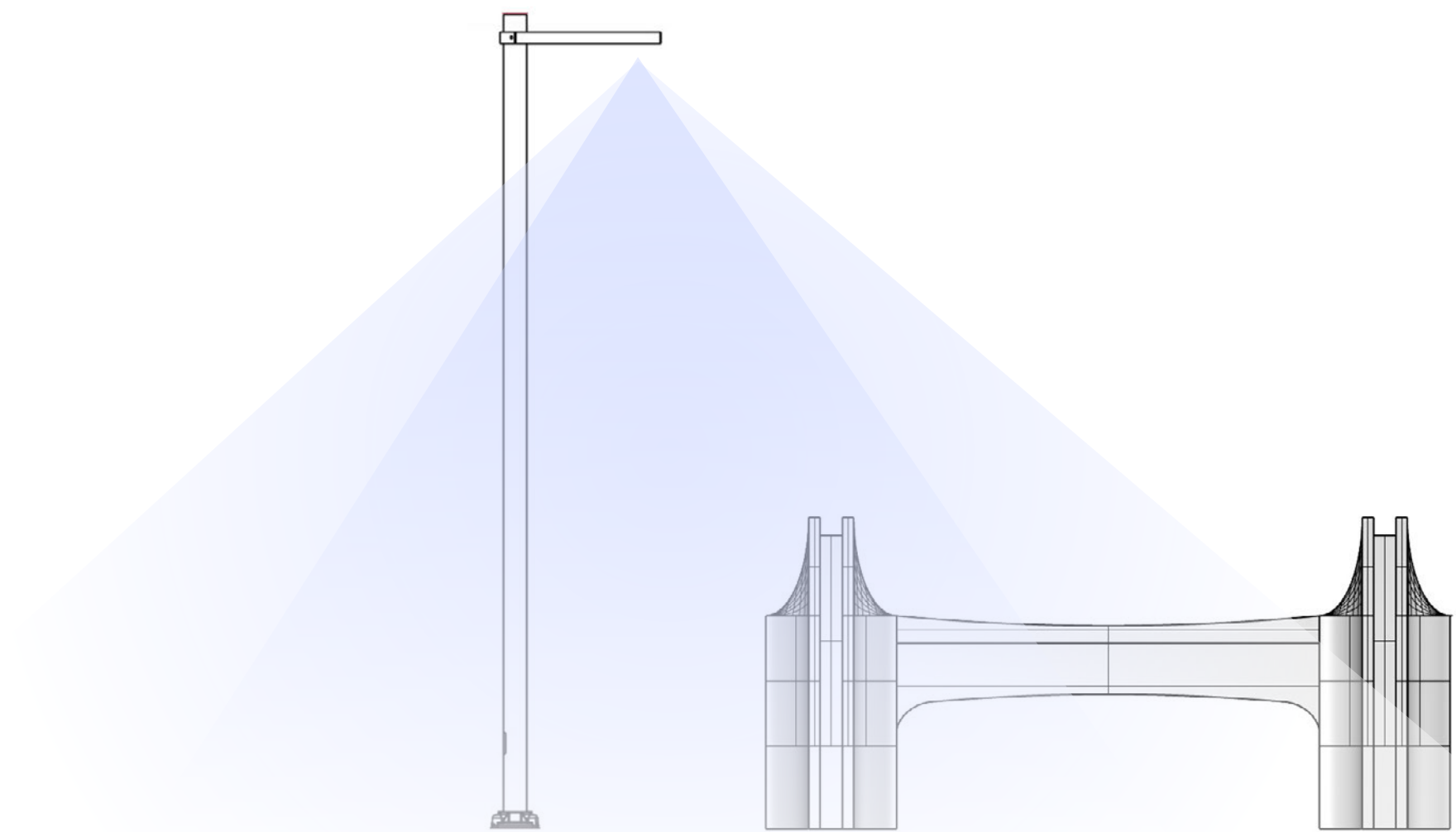
HIGHLIGHTS WITH GROUND LIGHTS DIRECTED FROM PLANTERS

(Acioun Large Accent Light by Amerlux)



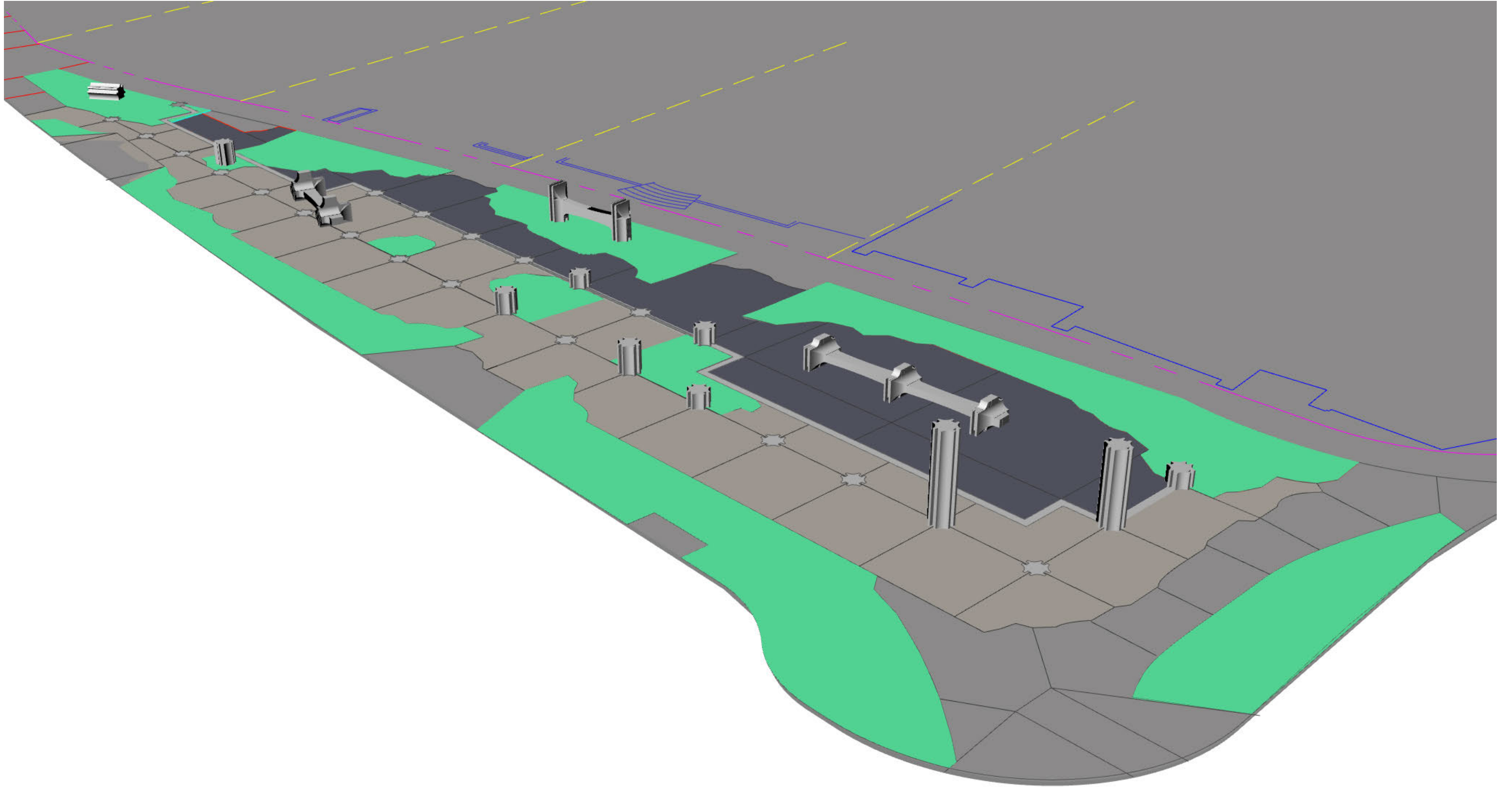
AMBIENT FILL PROVIDED BY PEDESTRIAN LIGHTS

(Rama Area Light by LandscapeForms)



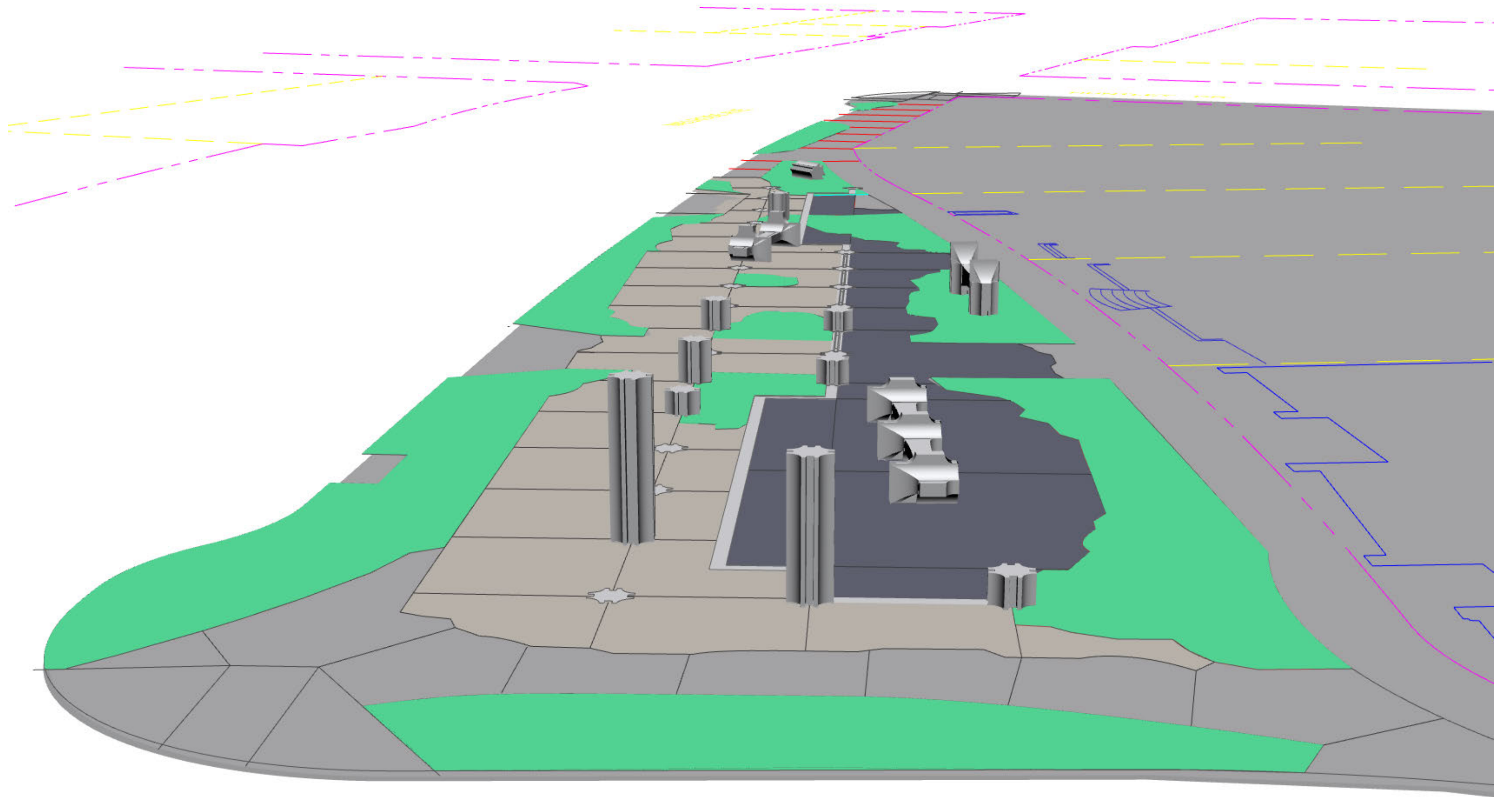
# EXTRACTION

PERSPECTIVES



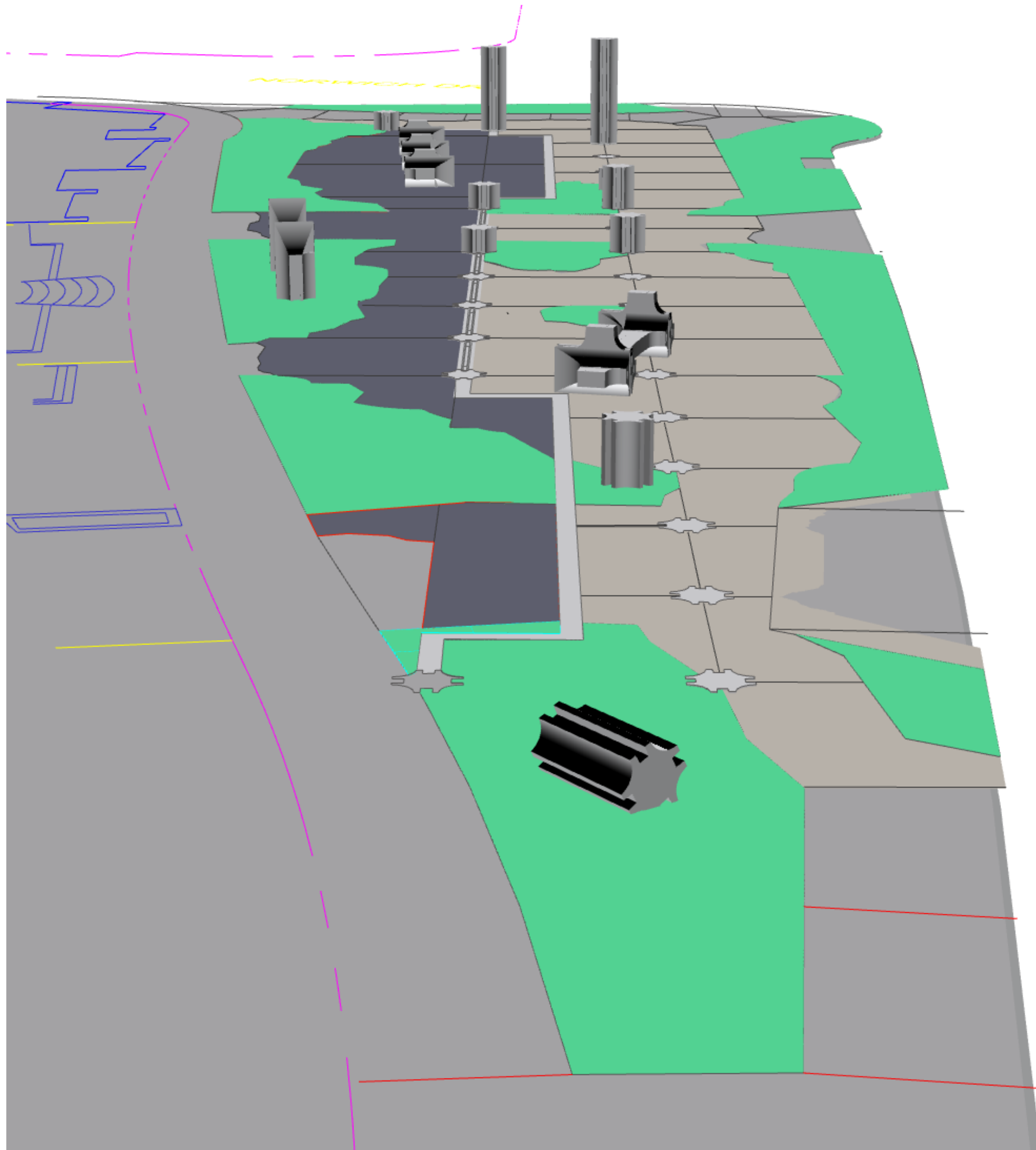
# EXTRACTION

PERSPECTIVES



# EXTRACTION

PERSPECTIVES





## Norwich Gathering Space





## Norwich Gathering Space





## Norwich Gathering Space



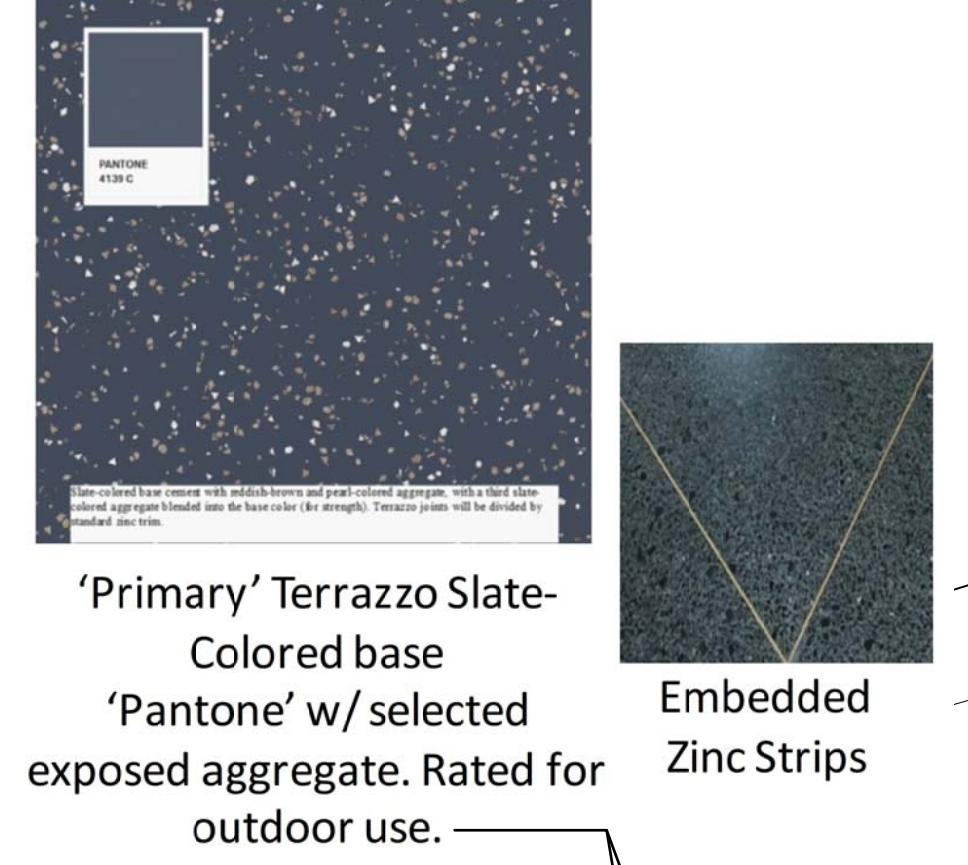


## Norwich Gathering Space



**INNER DECORATIVE TERRAZZO FINISH**

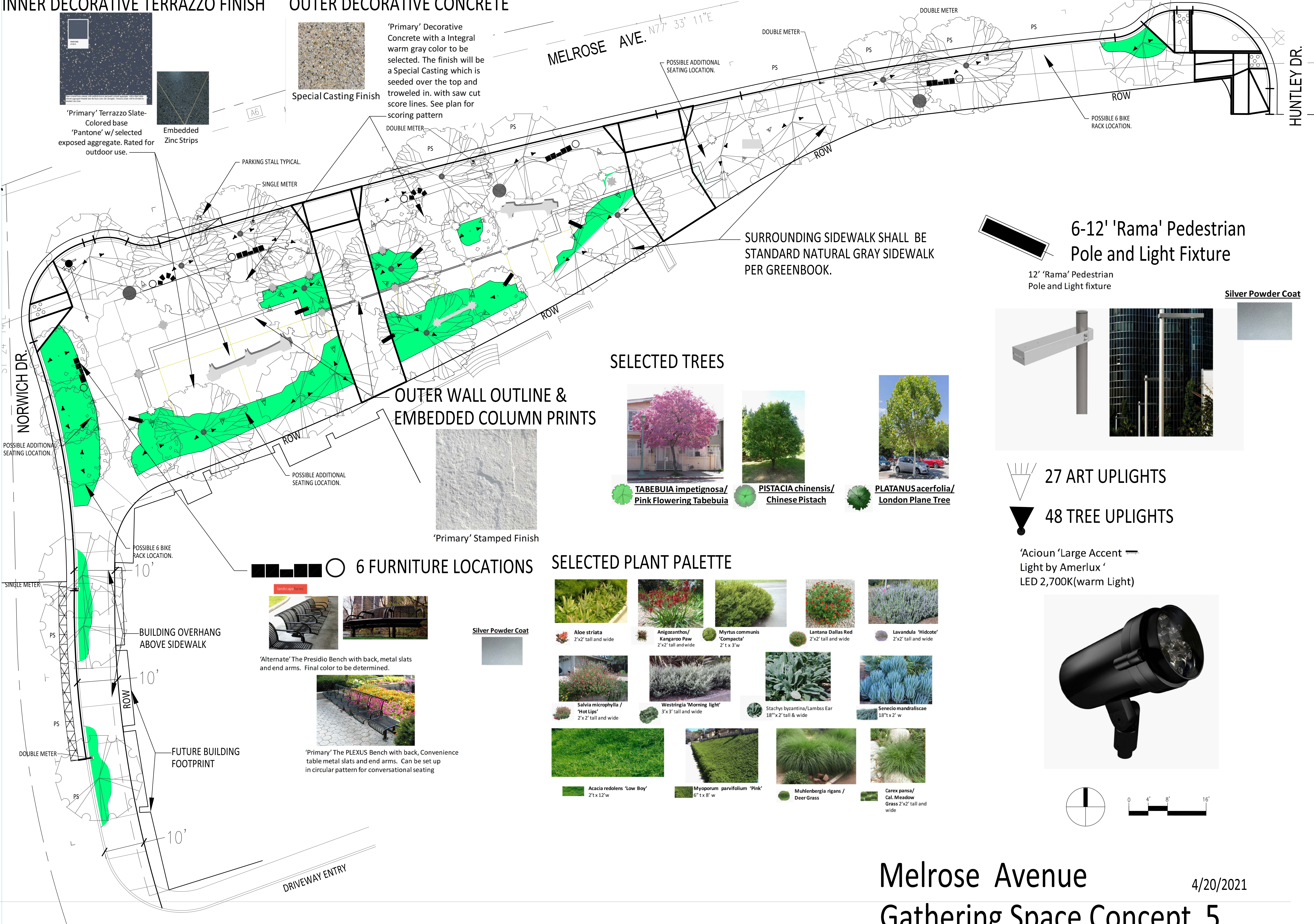
**OUTER DECORATIVE CONCRETE**



'Primary' Terrazzo Slate-Colored base 'Pantone' w/ selected exposed aggregate. Rated for outdoor use.  
Embedded Zinc Strips



Special Casting Finish  
'Primary' Decorative Concrete with an Integral warm gray color to be selected. The finish will be a Special Casting which is seeded over the top and troweled in, with saw cut score lines. See plan for scoring pattern



MELROSE AVE. N77° 33' 11"E

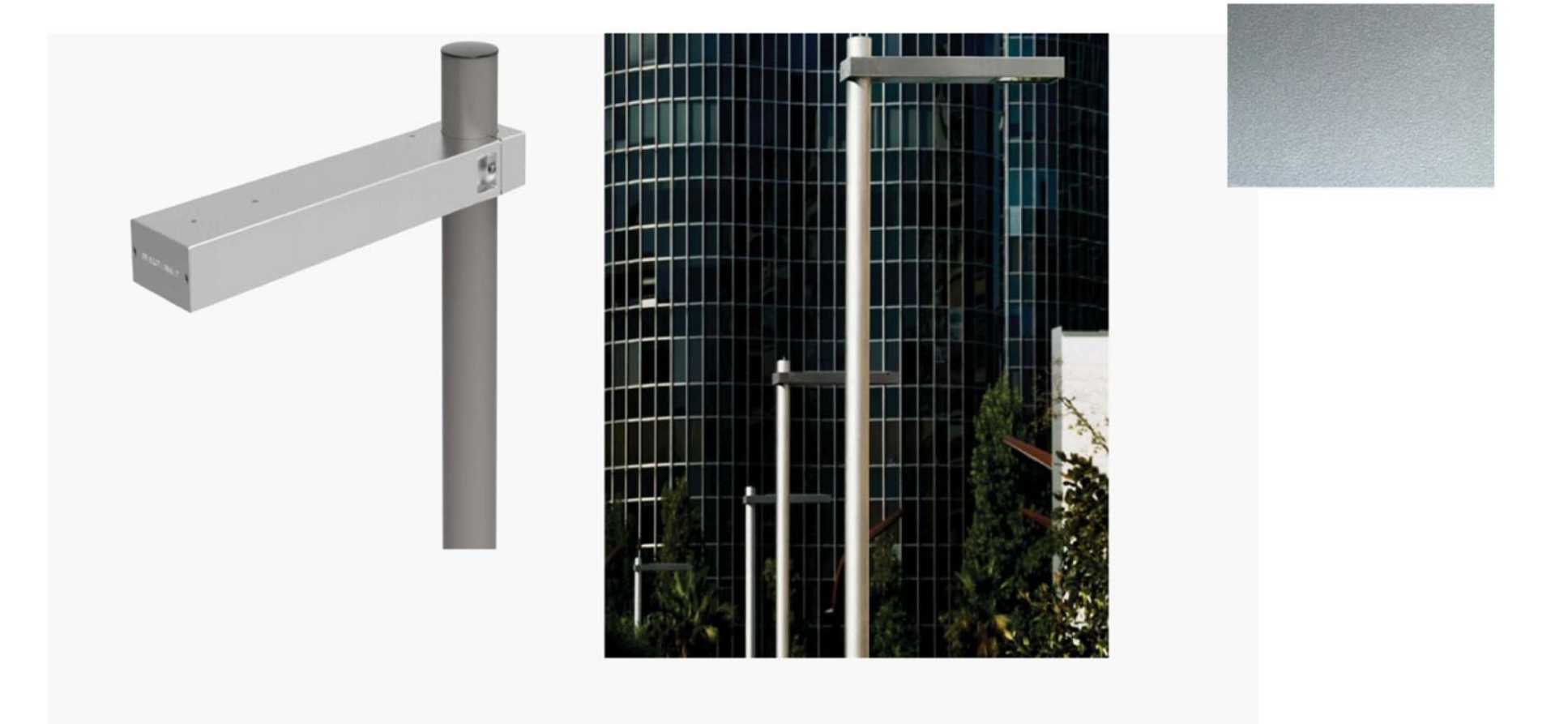
HUNTLEY DR.

NORWICH DR.

PARKING STALL TYPICAL  
SINGLE METER

SURROUNDING SIDEWALK SHALL BE STANDARD NATURAL GRAY SIDEWALK PER GREENBOOK.

6-12' 'Rama' Pedestrian Pole and Light Fixture  
12' 'Rama' Pedestrian Pole and Light fixture



Silver Powder Coat

**SELECTED TREES**



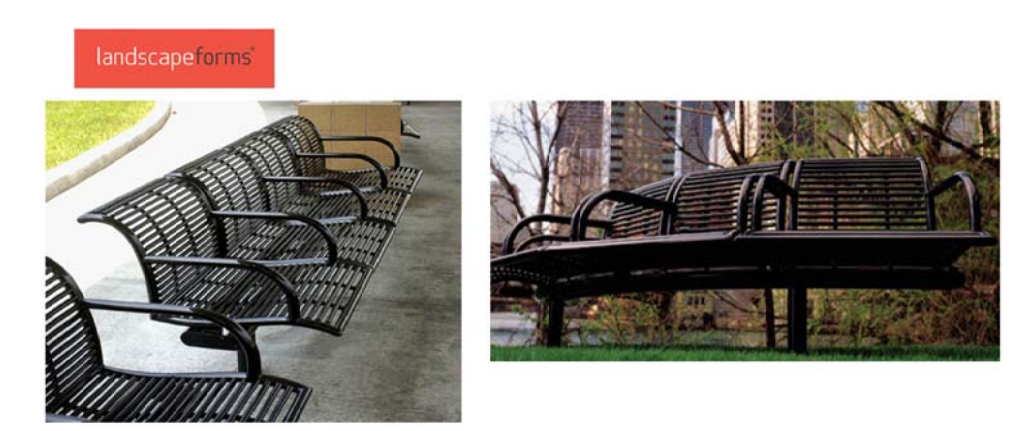
TABEBUIA impetiginosa/ Pink Flowering Tabebuia  
PISTACIA chinensis/ Chinese Pistach  
PLATANUS acerfolia/ London Plane Tree

**OUTER WALL OUTLINE & EMBEDDED COLUMN PRINTS**



'Primary' Stamped Finish

**6 FURNITURE LOCATIONS**



'Alternate' The Presidio Bench with back, metal slats and end arms. Final color to be determined.



'Primary' The PLEXUS Bench with back, Convenience table metal slats and end arms. Can be set up in circular pattern for conversational seating

**SELECTED PLANT PALETTE**

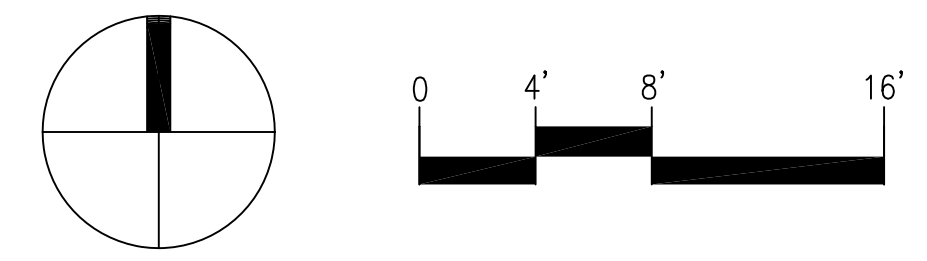


Aloe striata 2'x2' tall and wide  
Anigozanthos/ Kangaroo Paw 2'x2' tall and wide  
Myrtus communis 'Compacta' 2' x 3' w  
Lantana Dallas Red 2'x2' tall and wide  
Lavandula 'Hidcote' 2'x2' tall and wide  
Salvia microphylla / 'Hot Lips' 2'x2' tall and wide  
Westringia 'Morning light' 3'x3' tall and wide  
Stachys byzantina/Lamb's Ear 18" x 2' tall & wide  
Senecio mandraliscae 18" x 2' w  
Acacia redolens 'Low Boy' 2' x 12' w  
Myoporum parvifolium 'Pink' 6" x 8' w  
Muhlenbergia rigans / Deer Grass  
Carex pansa/ Cal. Meadow Grass 2'x2' tall and wide

27 ART UPLIGHTS

48 TREE UPLIGHTS

'Acion' 'Large Accent' Light by Amerlux ' LED 2,700K(warm Light)



# SITE AMENITIES

landscapeforms®

# Furniture



‘Alternate’ The Presidio Bench with back, metal slats and end arms. Final color to be determined.



## PLEXUS

Product Data Sheet



## Silver Powder Coat

There's a reason some award-winning design inventors. Please with imagination of designs.

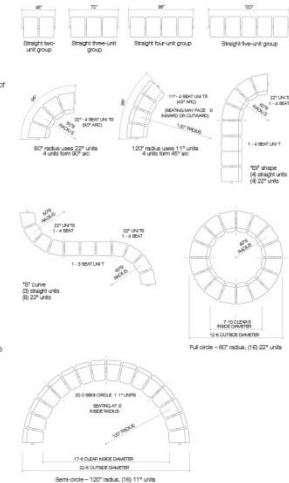


### Plexus

- Plexus wire grid panel is constructed of 5/16" perimeter and reinforcement wires (on 2-1/2" centers), with 1/8" cross wires on 1/2" centers.
- Wire grid is welded into a frame formed of tubular steel that is 7/8" o.d., and has .120" wall thickness.
- Arms are constructed of tubular steel 7/8" o.d., .120" wall thickness.
- Tables have the same basic wire grid panel and are offset to align with front of backed seat.
- Receptacles are constructed with 7/8" diameter tubular steel rings at top and bottom of the grid panels.
- Litter receptacle lids are formed of spun metal, liners of polyethylene.
- 40% um interior panels are formed of fiberglass.
- Hardware for seats, tables, arms and horizontal tube sections is shipped with each order.
- Gaskets for freestanding supports are included.
- Hardware for anchoring supports is NOT included.
- Surfaces and wall mounted supports are drilled to accept up to 1/2" anchor bolt of non-combustible material.

### Suggested Groupings

- Basic groups can be arranged in nearly unlimited configurations.
- A few examples are shown on this page.
- Seats (with or without back) and tables may be interchanged in any combination in most of these examples.
- Standard curved shapes are 60° radius or 120° radius.
- For special applications, custom radius configurations are available. (Seats with backs not available for 60° radius; not available with radius smaller than 60°.



page 1 of 4

Landscape Forms, Inc. | 800.521.2548 | F. 260.381.3455 | 7800 E. Michigan Ave., Kalamazoo, MI 49048



‘Primary’ The PLEXUS Bench with back, Convenience table metal slats and end arms. Can be set up in circular pattern for conversational seating

## NORWICH GATHERING SPACE

Date 11/19/2020



# SITE AMENITIES

landscapeforms®

## Pedestrian Lighting

12' 'Rama' Pedestrian Pole and Light fixture



Silver Powder Coat



City of West Hollywood  
California 1984

## NORWICH GATHERING SPACE



KABBARA  
ENGINEERING



LRM  
ASSOCIATES INC.

# SITE AMENITIES

landscapeforms

## Up Lighting Tree Canopies

'Acioun 'Large Accent  
Light by Amerlux '  
LED 2,700K(warm Light)

Satin Black Powder Coat

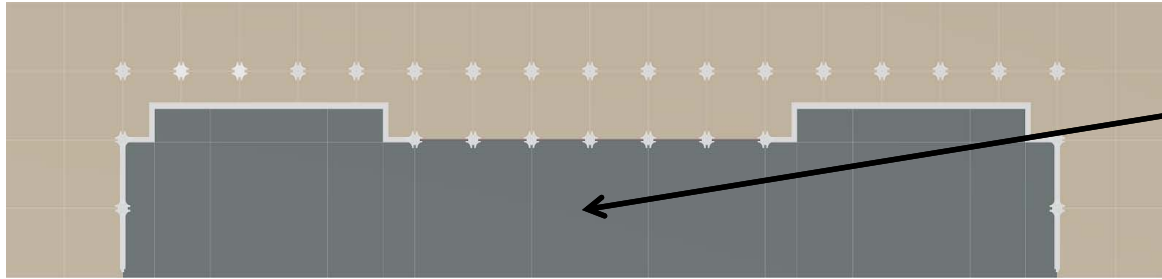


## NORWICH GATHERING SPACE



# SITE AMENITIES

## Decorative Terrazzo Finish Concrete



Decorative Terrazzo Finish Concrete which is rated for out door use. See below for Score lines options. See plan for scoring pattern. 1,631 SQ. FT



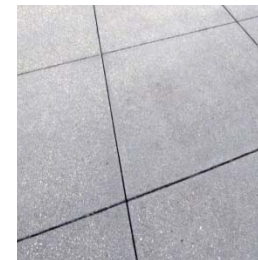
'Primary' Terrazzo Slate-Colored base 'Pantone' w/ selected exposed aggregate. Rated for outdoor use.



Embedded Zinc Strips



'Alternate' Decorative Concrete with a integral cool gray color & sandpaper finish



Saw Cut Control Joints



## NORWICH GATHERING SPACE



# PR DECORATIVE TERRAZZO FINISH

# OUTER DECORATIVE CONCRETE



'Primary' Terrazzo Slate-Colored base 'Pantone' w/ selected exposed aggregate. Rated for outdoor use.



Embedded Zinc Strips



Special Casting Finish

'Primary' Decorative Concrete with an Integral warm gray color to be selected. The finish will be a Special Casting which is seeded over the top and troweled in, with saw cut score lines. See plan for scoring pattern

MELROSE AVE. N77° 33' 11"E

METERS TYP.



SURROUNDING SIDEWALK SHALL BE STANDARD NATURAL GRAY SIDEWALK PER GREENBOOK.

6-12' 'Rama' Pedestrian Pole and Light Fixture

12' 'Rama' Pedestrian Pole and Light fixture



Silver Powder C

## SELECTED TREES



TABEBUIA impetiginosa/  
Pink Flowering Tabebuia



PISTACIA chinensis/  
Chinese Pistach



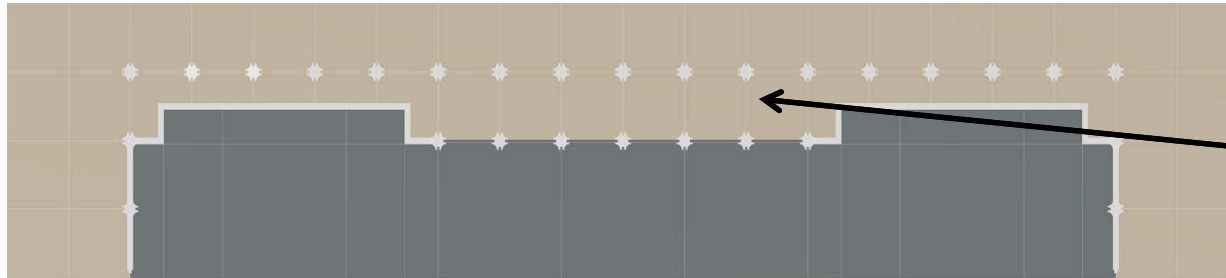
PLATANUS acerfolia/  
London Plane Tree

OUTER WALL OUTLINE & EMBEDDED COLUMN PRINTS

27 ART UPLIGHTS

# SITE AMENITIES

## Outer Decorative Concrete



Outer Decorative  
Concrete Area  
2,533 SQ. FT



Special Casting Finish

'Primary' Decorative Concrete with a Integral warm gray color to be selected. The finish will be a Special Casting which is seeded over the top and troweled in. with saw cut score lines. See plan for scoring pattern



Sandpaper  
finish

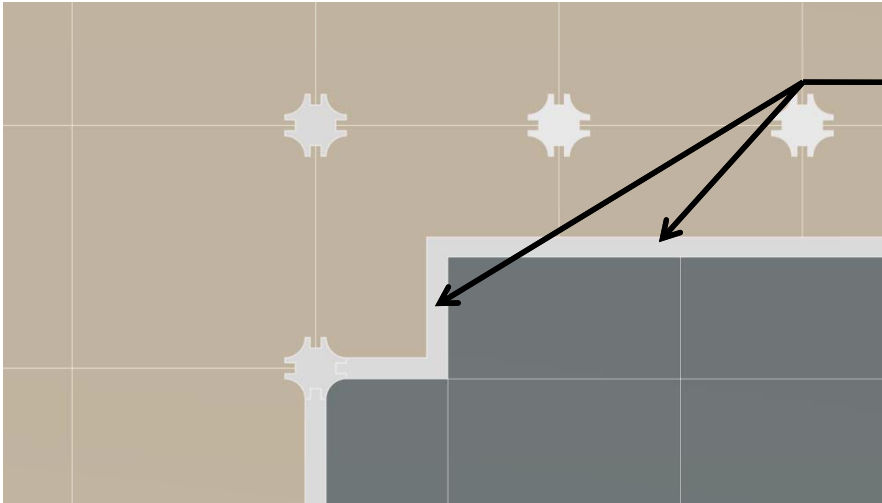
'Alternate' Decorative Concrete with a Integral warm gray color to be selected. The finish will be a Sandpaper finish and with saw cut score lines. See plan for scoring pattern.



## NORWICH GATHERING SPACE

# SITE AMENITIES

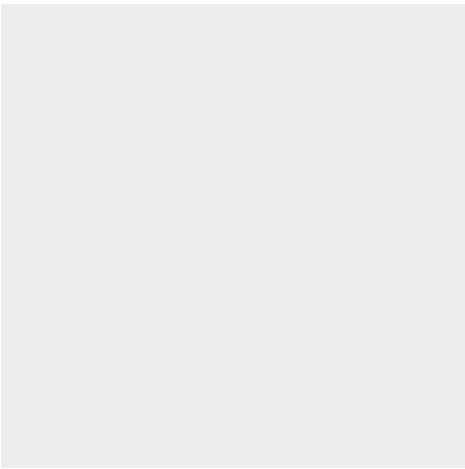
## Outer Wall Outline



- “Wall” outline
- Neutral tone
  - (Natural gray
  - Concrete)



‘Primary’ Stamped Finish



‘Alternate’ Sand paper Finish

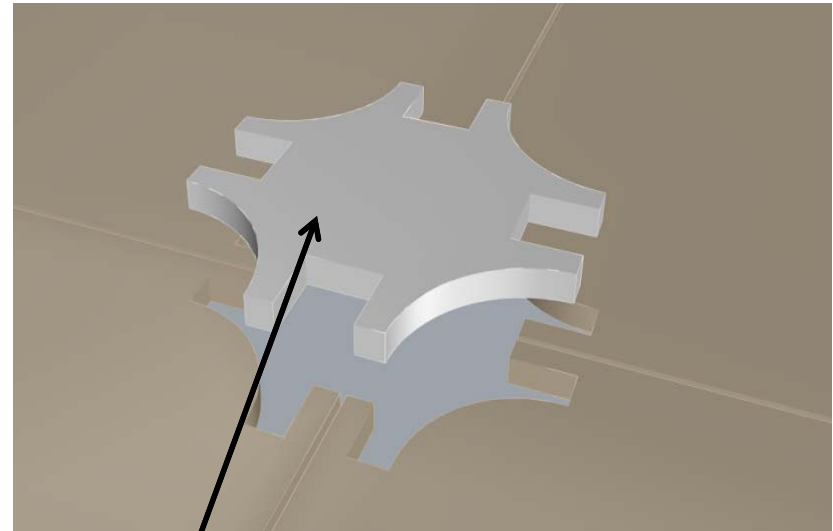
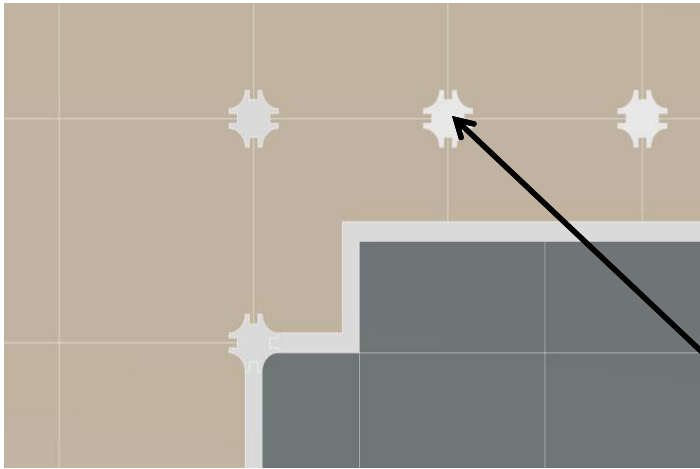


# NORWICH GATHERING SPACE



## SITE AMENITIES

# Embedded Casted Concrete Column Footprints



Column footprint in cast concrete

- Neutral tone, Match wall ruin
- Stamped or sandpaper finish (See Wall Outline Slide)



## NORWICH GATHERING SPACE



# Mediterranean Plant Palette



**Aloe striata**  
2'x2' tall and wide



**Anigozanthos/  
Kangaroo Paw**  
2'x2' tall and wide



**Myrtus communis  
'Compacta'**  
2' t x 3'w



**Lantana Dallas Red**  
2'x2' tall and wide



**Lavandula 'Hidcote'**  
2'x2' tall and wide



**Salvia microphylla /  
'Hot Lips'**  
2'x 2' tall and wide



**Westringia 'Morning light'**  
3'x 3' tall and wide



**Stachys byzantina/Lamb's Ear**  
18" x 2' tall & wide



**Senecio mandraliscae**  
18" t x 2' w



**Acacia redolens 'Low Boy'**  
2' t x 12' w



**Myoporum parvifolium 'Pink'**  
6" t x 8' w



**Muhlenbergia rigans /  
Deer Grass**



**Carex pansa/  
Cal. Meadow  
Grass**  
2'x2' tall and wide



## NORWICH GATHERING SPACE

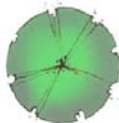


# SITE AMENITIES

## Selected Trees



**TABEBUIA impetignosa/**  
**Pink Flowering Tabebuia**



**PISTACIA chinensis/**  
**Chinese Pistach**

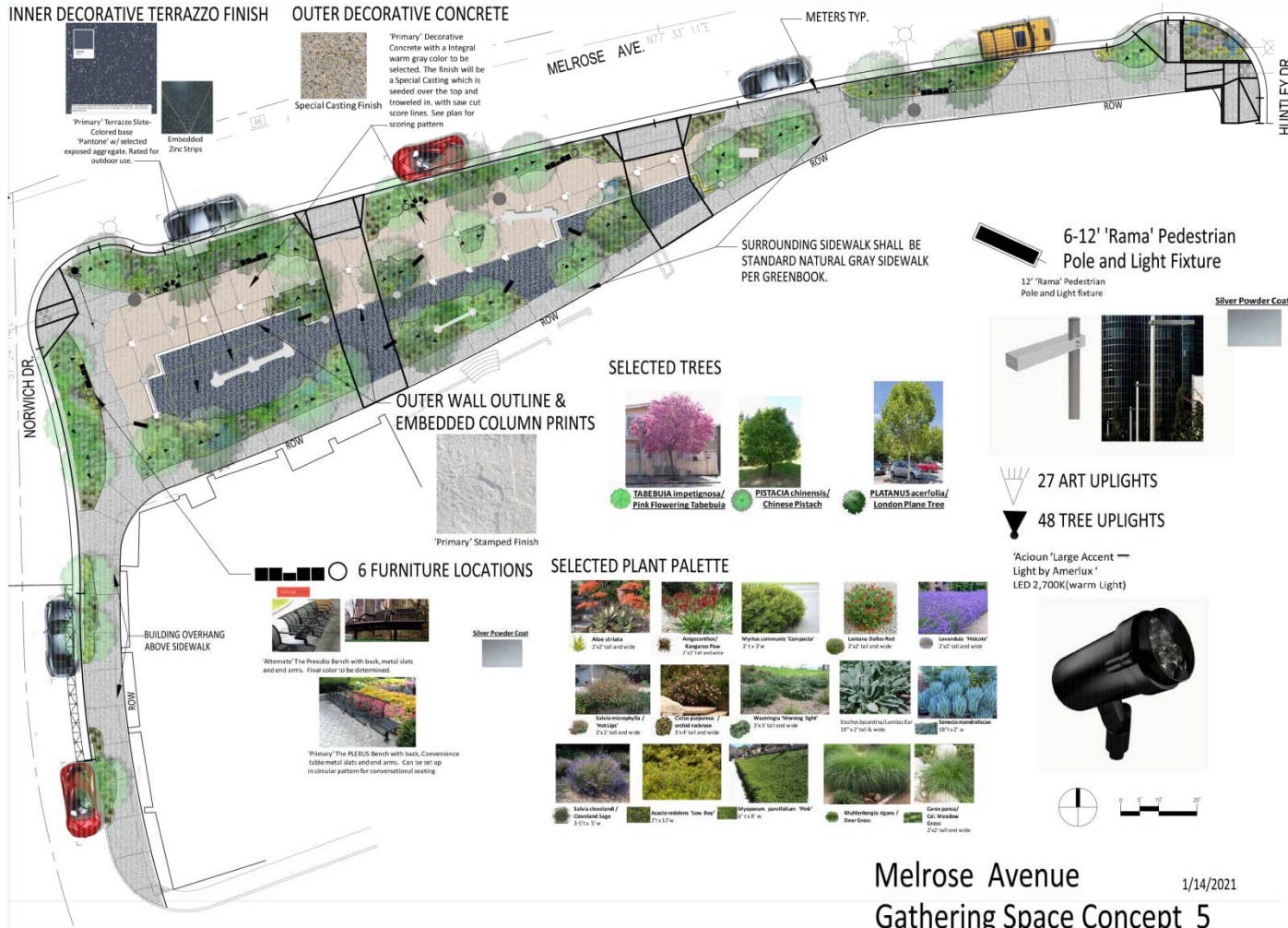


**PLATANUS acerfolia/**  
**London Plane Tree**



## Norwich Gathering Space





# Norwich Gathering Space





## Norwich Gathering Space





## Norwich Gathering Space





## Norwich Gathering Space





## Norwich Gathering Space

