

WEST HOLLYWOOD

COMMERCIAL RECYCLING AND WASTE COLLECTION GUIDE

ATHENS SERVICES



City of West Hollywood
California 1984



Athens Services

[AthensServices.com](https://www.AthensServices.com)

WELCOME TO ATHENS SERVICES

The City of West Hollywood and Athens Services have partnered to provide enhanced recycling and waste services to your community. At Athens Services, we value each and every customer. We are committed to providing proactive, high-quality collection services to the businesses of West Hollywood. The following guidelines and program details are provided to ensure that you receive the full benefit of your recycling and solid waste management services.

GENERAL INFORMATION

Athens Services

14048 E. Valley Blvd., City of Industry, CA 91746
P.O. Box 60009, City of Industry, CA 91716
Phone: (888) 336-6100
Fax: (626) 709-5601
www.AthensServices.com

Customer Service Hours:

7:00 a.m. - 5:00 p.m. (Monday - Friday)
7:00 a.m. - 12:00 Noon (Saturday)

Collection Hours:

7:00 a.m. - 6:00 p.m.

HOLIDAYS OBSERVED

Athens Services observes New Year's Day, Memorial Day, Independence Day (4th of July), Labor Day, Thanksgiving Day, and Christmas Day. If the holiday falls on Monday - Saturday, collection services for the remainder of the week will be delayed one day. If the holiday falls on Sunday, there will be no delay in service.



CUSTOMER SERVICE IS OUR PRIORITY!

Our Customer Service staff is specially trained to respond quickly to your needs and service requests.

Visit our website www.AthensServices.com to:

- ▶ Pay your bill and sign up for paperless billing.
- ▶ Live chat with a Customer Service Agent to ask a question or review the services provided to your community.
- ▶ Schedule the pickup of a bulky item.
- ▶ Order temporary services, including construction roll-offs and temporary 3-cubic-yard bins for household cleanup.

RECYCLING, WASTE, AND ORGANICS COLLECTION SERVICES

The recycling, trash, and organics collection program consists of bins and carts for businesses. Commercial businesses may subscribe to source-separated recycling and organics collection. Charges for service vary depending on the size and type of container and frequency of collection. Athens Services encourages commercial customers to source separate recyclables by placing them in a recycle bin or cart, rather than the trash bin. Not only does source separation help keep recyclable materials out of the landfill, but commercial customers who recycle may be able to decrease their trash service. **Recycling bins are free and unlimited to customers!**



RECYCLE



Bagged Shredded Paper, Flattened Cardboard, and Paper

Milk Cartons



Plastic Bottles and Cups, Take-out Container, Round Dairy Tubs, Milk Jugs



Ferrous Metals, Aluminum Cans, Foils, Metal Cans, Aluminum Pans

Glass Bottles and Jars



NO LIQUIDS OR FOOD

Remember to flatten cardboard boxes before placing in container.

X NO!



Food Waste



Chemicals



Batteries



Foam



Yard Waste



Electronics



Sharp Objects



LANDFILL



Diapers



Coffee Cups and Lids



Juice Packs



FOAM

Foam



Cereal Bars



Broken Ceramics



Condiment Packages



Coffee Pods



Paper Cups, Lids, Straws



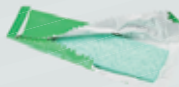
Chip Bags



Latex Gloves



Pet Waste



Gum Wrappers

NO RECYCLABLES OR GREEN WASTE

*Automobile parts, construction debris, and hazardous waste are **NOT ALLOWED** in your waste containers.*

X NO!



Batteries



Chemicals



Light Bulbs



Electronics



Sharp Objects



Paint



Fruit Peels



Egg Shells



Cheese and Dairy



Fruits



Bones



Pizza



Coffee Filter

FOOD-SOILED PAPER



Food-Stained Paper



Napkins



Containers



Paper Bags



Wooden Utensils



Pizza Containers



Bowls



Paper Straws

Only put 100% fiber-based, food-soiled paper in the food waste bin.

NO!



Plastics



Gloves



Pet Waste



Glass



Metal



Foam



GREEN WASTE (YARD WASTE)



Branches



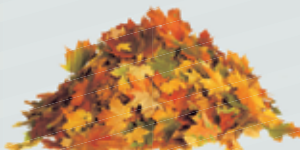
Tree Trimmings



Grass Clippings



Flowers



Leaves



Scrap Wood

**No painted or treated wood.
No larger than 4 inches in diameter and 4 feet in length.*

DO NOT PUT PALM FRONDS OR SUCCULENTS IN YOUR YARD WASTE BIN.

X NO!

Reminder: Pet waste should be placed in the trash bin.



Pet Waste



Foam



Rocks



Soil



Palm Fronds



Cacti, Succulents or Yucca

CONTAINER ACCESSIBILITY

The container must be accessible at all times on your regularly scheduled collection day. Please make sure that gates are open or that our driver has a key or gate code. Make sure there are no delivery trucks, excessive trash, or other obstructions preventing access to your container.



WEIGHT AND VOLUME LIMITS

Do not overfill your bins or carts. All waste must be placed inside of the containers with the lids closed. Any material or bags placed alongside or above the sides of containers will not be collected. If needed, please request an additional pickup. Carts cannot exceed a weight limit of 150 pounds; doing so can damage the cart or collection truck. Do not overfill the cart by tightly packing it; all items inside the cart must freely fall out when emptied. Dirt, rock, concrete, and other construction debris are NOT allowed in waste containers. Please order a construction debris (roll-off) container for those materials.

DO NOT OVERLOAD CONTAINERS

Do not overfill your waste containers. Please, request additional collection service if necessary. To maximize capacity of your container, please break down all cardboard boxes.



TEMPORARY BINS

For short-term projects, you can order an additional 3-cubic-yard temporary bin by visiting www.athensservices.com and filling out the "Request Services" form.

EXTRA COLLECTION SERVICE

We have radio-dispatched trucks in your area six days per week (Monday - Saturday) that can provide you with additional collection service as needed. For more information, visit www.athensservices.com and submit a "Request Services" form.

ROLL-OFF SERVICE

These containers handle large volumes of material and are perfect for construction and demolition projects. If you are removing concrete or asphalt, you will need a low-profile, 10-cubic-yard roll-off container. Construction projects may necessitate large-30-cubic-yard roll-off containers. Please visit www.athensservices.com and submit a "Request Services" form to place an order.

TEMPORARY BINS AND ROLL-OFF CONTAINERS

If you are cleaning out your office, complex, or garage you may need a 3-cubic-yard, temporary bin. If you are removing concrete or asphalt, you will need a low-profile, 10-cubic-yard roll-off container. Construction projects may necessitate large, 30-cubic-yard roll-off containers. To place an order, visit www.athensservices.com and submit a "Request Services" form.



ILLEGAL DUMPING

It is illegal to abandon or dump bulky waste or other trash in the public right-of-way. Please schedule a bulky item pickup prior to placing materials at the curb (see Bulky Items section for further detail). Please visit www.athensservices.com and request a “Bulky Pickup” for the collection of any illegally dumped items.



BULKY ITEM PICKUP AND ELECTRONIC WASTE

For an additional fee, commercial customers can contact Athens Services for the removal of large bulky items and electronics.

BULKY ITEM EXAMPLES

Acceptable bulky items include (but are not limited to): dryers, furniture, mattresses, refrigerators, rugs, tree trunks, washing machines, and water heaters.

Automobile parts, construction debris, and hazardous waste are **not allowed** in your waste containers or as part of a bulky item pickup.

It is illegal to dump items on the sidewalk without calling Athens to arrange for a pickup. Illegal dumping will result in a citation ranging from \$250-\$850.




ELECTRONIC WASTE

Electronics (e-waste) can include those devices that utilize electrical wiring, plug into an electric outlet, or require a battery or light bulb. Examples of e-waste include (but are not limited to): computers and accessories, circuit boards, extension cords, flash lights, microwaves, phones, stereos, and televisions.



SCHEDULE A PICKUP - BULKY AND E-WASTE

- ▶ Requests must be made 48 hours in advance of your normal collection day by filling out a “**Bulky Pickup**” request at www.athensservices.com.
- ▶ Requests for bulky pickup can also be made through the City’s Official App. 
- ▶ Place all bulky items next to your containers, before 7:00 a.m. on your scheduled collection day.
- ▶ All bushes, branches, and lumber must be cut and tied in bundles no longer than 4 feet in length. Carpet must be cut into lengths no longer than 4 feet and rolled into a diameter of no more than 18 inches. Refrigerator doors must be removed from the hinges.

DONATE, DON'T DISPOSE

If your items are still in good condition, consider donating. There are several organizations in the community that would be happy to rescue your items:

- ▶ **Out of the Closet Thrift Store**
8224 Santa Monica Blvd.
West Hollywood, CA 90046
(323) 848-9760
10:00 a.m to 7:00 p.m. Daily

- ▶ **National Council of Jewish Women | Los Angeles Council Thrift Store**
360 N. Fairfax Ave.
Los Angeles, CA 90036
(323) 651-2080
For more information or to schedule a donation pickup, visit <https://ncjwla.org/> or call (800) 400-6259.

- ▶ **Goodwill Southern California Donation Center**
8430 Beverly Blvd.
Los Angeles, CA 90025

- ▶ **Craigslist**
<https://losangeles.craigslist.org/>

- ▶ **The Freecycle Network**
<https://www.freecycle.org/>

UNIVERSAL WASTE AND HAZARDOUS WASTE

U-Waste primarily comes from consumer products containing mercury, lead, cadmium, and other substances that are hazardous to human health and the environment. Examples of U-Waste include: batteries, fluorescent light tubes, compact fluorescent light bulbs or CFLs, thermometers, thermostats, and various electronic devices.



U-WASTE DISPOSAL

Businesses and residents can properly dispose of CFLs and batteries at the following location during regular business hours:

- ▶ **Home Depot**
5600 Sunset Blvd.
Los Angeles CA 90028
(323) 461-3303

HAZARDOUS WASTE

It is illegal to dispose of hazardous materials into your waste container, down the drain, or by abandonment. Hazardous waste is any product labeled toxic, poisonous, corrosive, flammable, combustible, or an irritant. Examples include (but are not limited to): antifreeze; automotive fluids; cleaning products; compressed gas cylinders (full or empty); fertilizers, herbicides, and pesticides; paint; pharmaceuticals; pool chemicals; solvents; and more. For a complete list, visit <http://ladpw.org/epd/hhw/>.

Business hazardous waste and electronic waste is not accepted at the County permanent centers or collection events. If you are a small business with hazardous waste, you may qualify for the City of L.A.'s Small Quantity Generator Program. Visit www.businessrecycling.com to locate a proper recycler.



SPECIAL WASTE

Athens Services is qualified and experienced in handling your most challenging waste streams. Athens is staffed with specialists in the area of regulatory framework for hazardous and toxic substances; organic, inorganic, and analytical chemistry; and environmental law. Email specialwaste@athensservices.com for more information.

TIRE RECYCLING

Tires are not permitted for disposal in your trash, recycling, or green waste containers. To find a center that accepts used tires call **1(888) CLEAN LA (888) 253-2652** or visit their website at www.888cleanla.com.



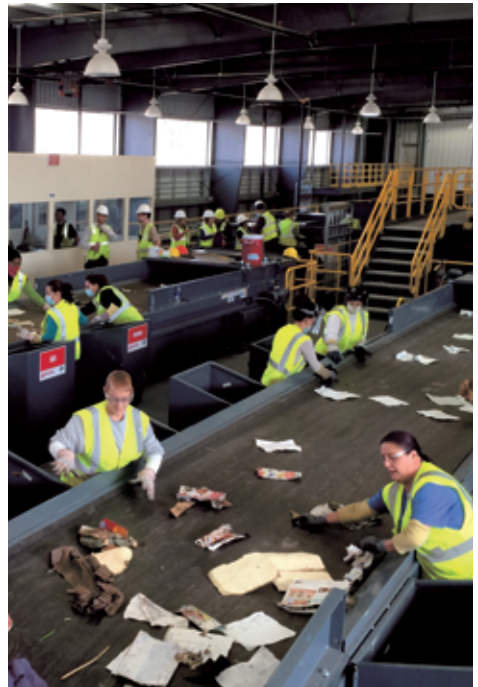
MANDATORY RECYCLING LEGISLATION

COMMERCIAL RECYCLING (AB 341)

California Assembly Bill (AB 341) requires all businesses and multifamily buildings (of 5 or more units) that generate 4 cubic yards or more of commercial solid waste per week to arrange for recycling services.

Is My Business Compliant? Yes! If you are a customer of Athens Services, you are compliant with AB 341.

The Athens Services state-of-the-art Material Recovery Facilities (MRFs) process trash and recyclables to ensure AB 341 compliance. For more information, please visit: <http://athensservices.com/diversionab-341> or visit calrecycle.ca.gov.



COMMERCIAL ORGANICS RECYCLING (AB 1826)

California **Assembly Bill 1826 - Mandatory Commercial Organics Recycling Law** requires businesses and apartments (of 5 or more units) that generate (on a weekly basis) 4 cubic yards or more of municipal solid waste to implement organics waste recycling (including landscape waste and food waste). Food waste collection does not apply to apartments.



Who Does This Impact?

Beginning January 2019, businesses that generate 4 cubic yards or more of commercial solid waste per week must arrange for organic waste recycling services. For more information on the compliance timeline and legislation, please visit: <https://athensservices.com/organics-waste-and-ab-1826/>

The Athens Organics Solutions:

Athens Services provides a separate container for your separated organics waste and recycles your organics through composting and mulching at our compost facility, American Organics.

Organic Waste Examples:



GREEN WASTE

Grass clippings
Leaves and branches
Flower and hedge trimmings
Weeds
Lumber, scrap wood and plywood
(not painted or treated)



FOOD SCRAPS

Fruits and vegetables
Cheese and dairy
Meat, bones, poultry and seafood
Bread, rice and pasta
Cut flowers and herbs
Coffee filters



100% FIBER-BASED, FOOD-SOILED PAPER

Food-stained paper
Napkins and paper kitchen towels
Paper egg cartons
Paper packaging
Paper plates and cups
(no plastic lining)
Pizza boxes

Consider Food Donation:

Food donations are legally protected and supported by the California Department of Public Health. The California Good Samaritan Food Donation Act (AB 1219) provides liability protections for entities that make good faith donations of surplus food. The federal Bill Emerson Good Samaritan Food Donation Act also protects businesses from civil and criminal liability, should donated products cause any harm to the recipient. For further information, please contact the LA County Department of Public Health.



WEST HOLLYWOOD

COMMERCIAL RECYCLING AND WASTE COLLECTION GUIDE

ATHENS SERVICES



PRINTED ON RECYCLED PAPER



P.O. BOX 60009
City of Industry, CA 91716

PRSRRT STD
U.S. POSTAGE
PAID
PERMIT #100
CLAREMONT, CA