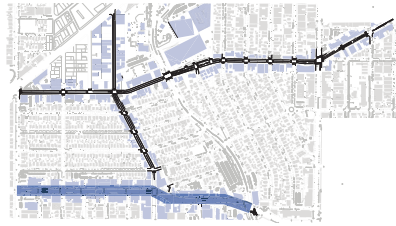


# BEVERLY BLVD.

**Background** Beverly carries the highest traffic volume in the Avenues, commensurate with its role as an "arterial" that carries cross-town traffic. With the proposed improvements, Beverly can retain its capacity while also serving local businesses and residents.

**Proposed Changes** The following improvements are proposed for Beverly:

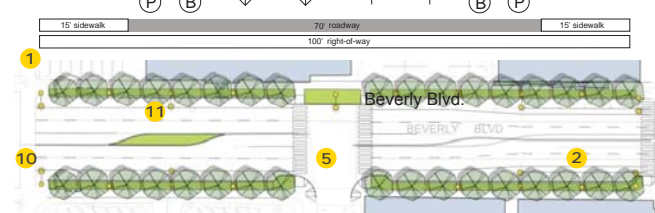
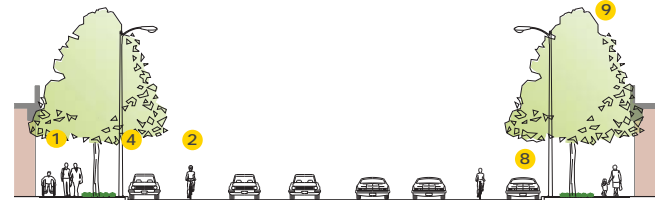
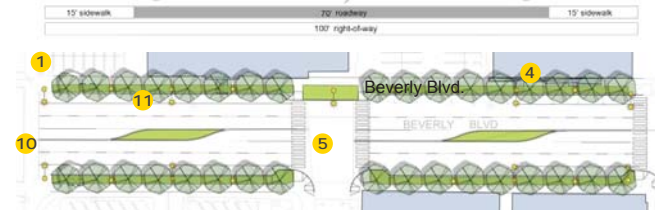
- 1 Maintain existing 15-foot wide sidewalks
- 2 Add bike lanes if needed to complete the regional bicycle system (requires removal of 2-way left-turn lane)
- 3 Make roadway width as consistent as possible, smoothing out transitions and re-purposing unused roadway as pedestrian space
- 4 Provide parallel curbside parking throughout
- 5 Add new curb extensions where appropriate
- 6 Add a crosswalk at Clark
- 7 Continue working with Cedars-Sinai Medical Center and the City of Los Angeles to improve the pedestrian environment and crossing at Beverly and San Vicente
- 8 Extend the wide landscaped parkways and curb strip that give Beverly its unique character; Install both where missing
- 9 Plant street trees
- 10 Install new modern roadway lighting with pedestrian lights
- 11 Create a new city/district gateway at Beverly and Robertson designed in conjunction with the new gathering place



Key Plan

## Vision for Beverly

- A sleek and modern thoroughfare
- A shopping boulevard for high-design products
- Integrated with more active uses: cafés, retail, residential (mixed use)
- Wide beautifully landscaped parkways
- Beautifully landscaped medians
- Feature a great public gathering place



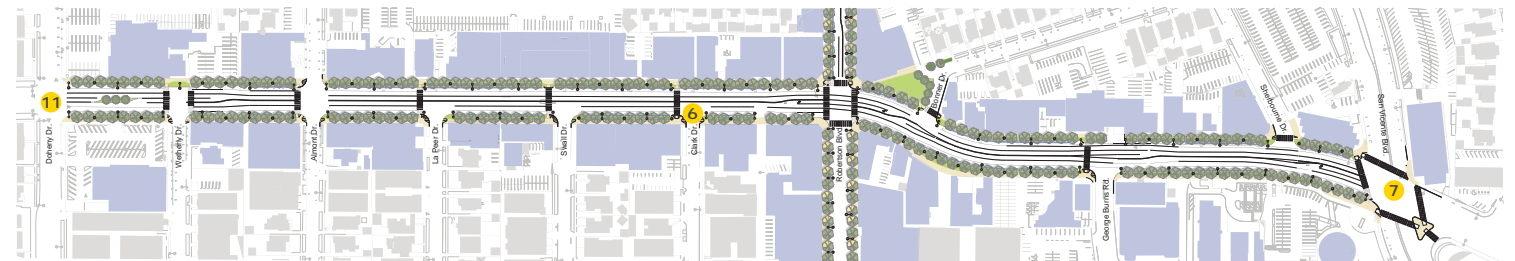
Beverly today

**Without Bike Lanes** Beverly cross section and plan if no bike lanes are added. Sidewalks will maintain their width and new landscaped medians will be added.

**With Bike Lanes** Beverly cross section and plan if bike lanes are added. Sidewalks will maintain their width, the center turn lane will be eliminated and landscaped medians will occur wherever possible.



Before (top left), proposed without bike lanes (top right) and with bike lanes (bottom).



Proposed improvement plan for the entire street showing curbside parking, wider sidewalks, curb extensions with directional ramps, street trees in planted tree wells, street lights, and gateway median.