

GATHERING PLACES

Background Placemaking is often defined by the spaces inhabited by people who energize and give the district energy everyday and for special programmed events. With street and sidewalk modifications come opportunities to create new spaces that didn't exist before in the Avenues.

Small Gathering Places New curb extensions will calm traffic and make crossings safer for pedestrians. At several intersections, there is room to provide small gathering places.

Large Gathering Places The Avenues Working Group felt the larger gathering places should feel like an urban plaza (vs. more natural or park-like). There should be landscaping and continuation of street trees, but the final design reflect the adjacent streetscape while integrating new features. Final design will discourage hiding places and opportunities for illicit behavior, and be well-lit.

Programming & Amenities

Programming The gathering spaces should be designed to allow for a range of activities, which will be dependent on the adjacent commercial use. Uses could include dining, programming exhibits in an outdoor art gallery, outdoor fashion or musical events, and seasonal pop-up structures, to name a few.

Amenities To accommodate a variety of activities there could be seating and tables, permanent or temporary public art, an

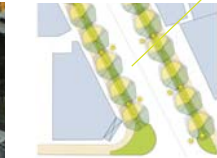
Examples of potential program activities (L) and individual owners who transformed street parking into temporary active uses through parklets (R).



Examples of curb extensions.



Melrose at Robertson
Modifications to the roadway will widen the south sidewalk to allow for additional landscaping, seating or outdoor dining.

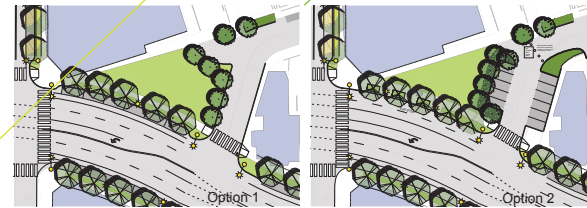
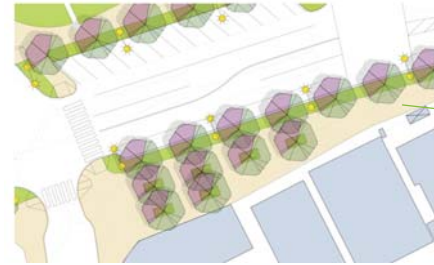


Robertson at Rosewood
New curb extensions at the NW corner of each intersection south of Melrose will be an opportunity for landscaping and wayfinding.



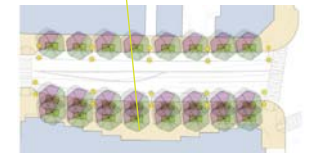
Photo examples of urban plazas

Melrose at Norwich
The new roadway configuration will widen south sidewalk creating a new, central gathering place.



Beverly at Robertson
A new gateway plaza can be created by replacing the parking lot with either: curbside parking (Option 1) or 90-degree street parking on Bonner with limited access to the neighborhood (Option 2) and screening it from the adjacent residences with landscaping.

Examples of amenities that can be located in the larger gathering places.



Melrose at La Cienega
Roadway changes will allow for double rows of trees on the south.