

**Working Group preferences are summarized in red.
Group 1 + Group 2 = Total**

MAINTENANCE CONSIDERATIONS

	General Fund	Assessment District	BID	Individual Property Owners
Parkways / Tree Wells				
Grates	<input type="checkbox"/>			
Planted		<input type="checkbox"/>	<input type="checkbox"/>	<input type="checkbox"/>
Stabilized DG		<input type="checkbox"/>	<input type="checkbox"/>	<input type="checkbox"/>
Grates				
Mulch; to be planted by property or business owners		<input type="checkbox"/>	<input type="checkbox"/>	<input type="checkbox"/>
Street Trees				
Canopy trees	<input type="checkbox"/>			
Street Lights				
Roadway lights (30')	<input type="checkbox"/>			
All mid-height (20')	<input type="checkbox"/>			
Pedestrian lights (12') - only in combination with roadway lights		<input type="checkbox"/>		
String lights		<input type="checkbox"/>		
Curb Extensions				
Paved	<input type="checkbox"/>			
Planted		<input type="checkbox"/>		
Sidewalk Paving				
Concrete	<input type="checkbox"/>			
Higher-quality paving throughout		<input type="checkbox"/>		
Higher-quality paving upgrade by owner				<input type="checkbox"/>
Higher-quality paving at key locations, e.g., banding throughout or curb extensions		<input type="checkbox"/>		
Crosswalk Paving - Signalized Intersections				
Signalized intersections:				
Zebra stripes	<input type="checkbox"/>			
Colored concrete pattern		<input type="checkbox"/>		
Lithocrete		<input type="checkbox"/>		
Pavers		<input type="checkbox"/>		
Crosswalk Paving - Unsignalized Intersections				
Zebra stripes only	<input type="checkbox"/>			

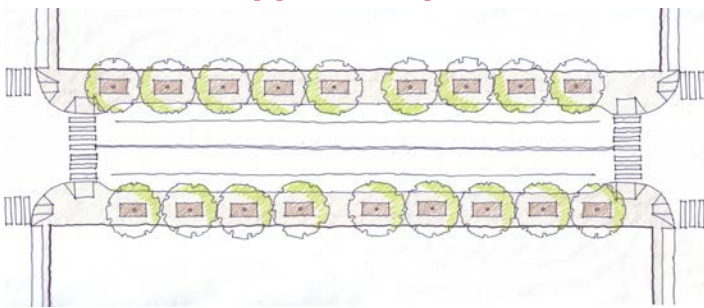
For the following choices, * = requires additional funding (columns 2,3 or 4).

Melrose

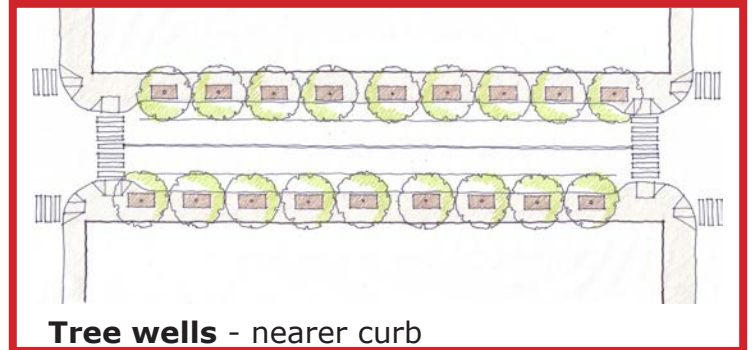
SIDEWALK LAYOUT

What we heard:

Consensus support for planted tree wells near the curb with new trees.



Tree wells - current tree locations



Tree wells - nearer curb

Which surface material do you prefer for tree wells?



Metal grates



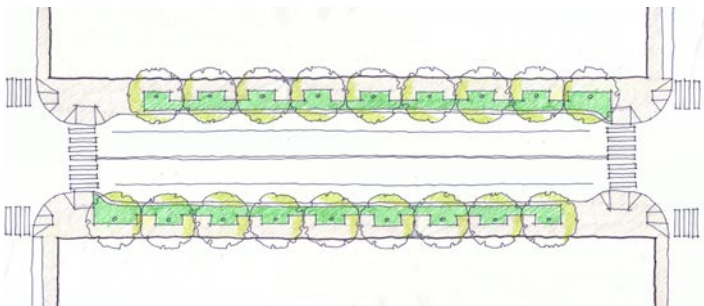
Decomposed granite*



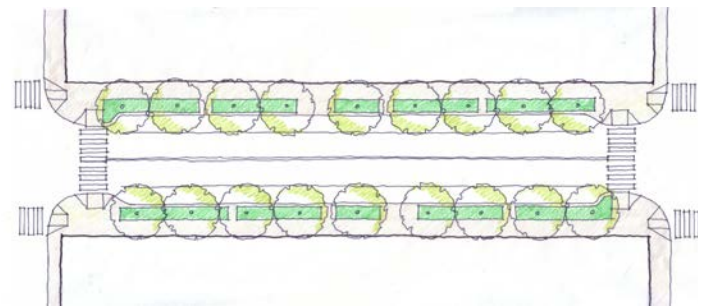
Planted*



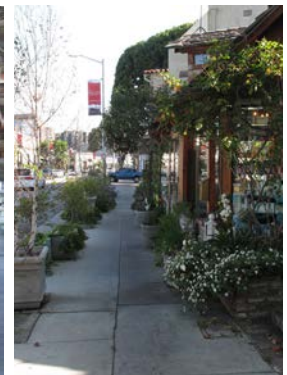
Mulch (plants by owners)*



Parkways* - garden-like with outdoor dining etc



Parkways* - narrower, consistent



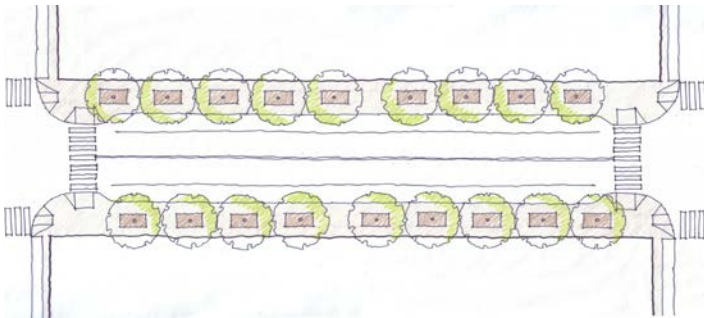
Circle layouts & tree well surface materials you'd like for Melrose; X out ones you don't like.

Robertson

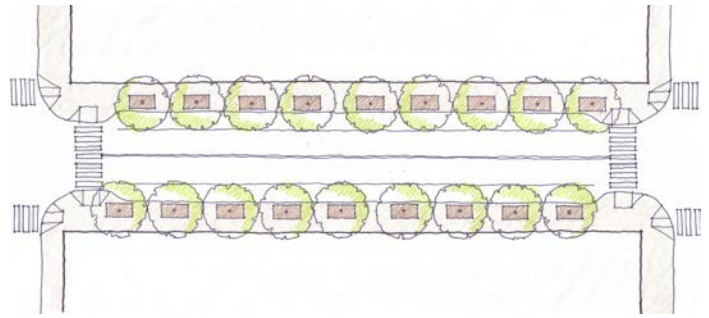
SIDEWALK LAYOUT

What we heard:

Consensus support for planted parkways near the curb with new trees.



Tree wells - current tree locations



Tree wells - nearer curb

Which surface material do you prefer for tree wells?



Metal grates



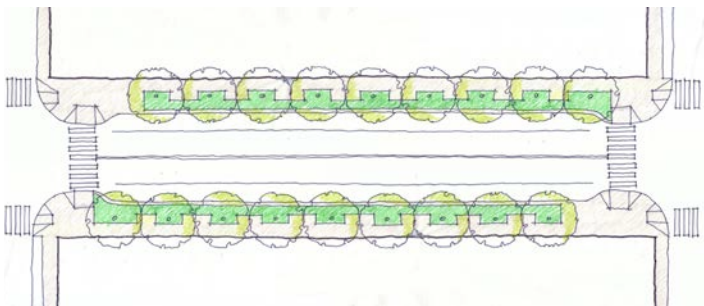
Decomposed granite*



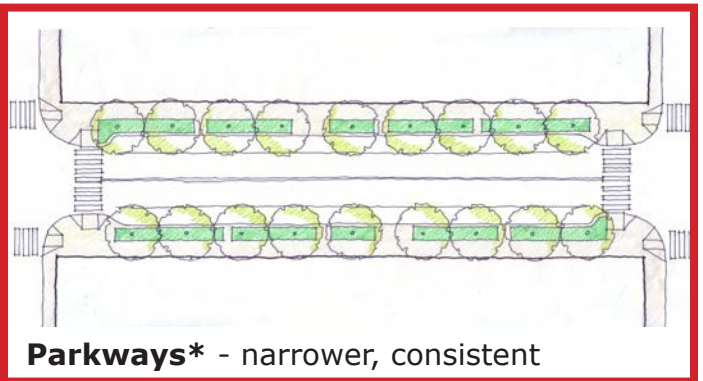
Planted*



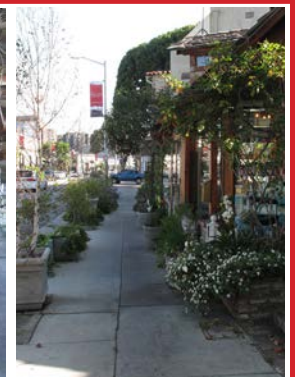
Mulch (plants by owners)*



Parkways* - garden-like with outdoor dining etc



Parkways* - narrower, consistent



Circle layouts & tree well surface materials you'd like for Robertson; X out ones you don't like.

Characteristics

STREET TREES

What we heard:

Group 1 - all new trees on Melrose and Robertson; 3 species: 1 species on both streets, alternated with a different second species on each street, eg. A-B-A-B and A-C-A-C. Keep existing trees and infill with a new tree on Beverly.

Group 2 - all new trees on all streets; 3 species; 1 species on each street. Some support for a "highlight" tree, until we discussed the fact that occurs on Santa Monica Blvd. at signalized intersections and no one has noticed it.

MELROSE		ROBERTSON		BEVERLY	
Species:		Species:		Species:	
Mix of new & existing	2+0=2	Mix of new & existing	1+0=1	Mix of new & existing	1+0=1
All new mix - alternating	1+0=1	All new mix - alternating	2+0=2	All new mix - alternating	1+0=1
All new mix - by segment	0+1=1	All new mix - by segment	0+1=1	All new mix - by segment	1+1=2
Form:		Form:		Form:	
Columnnar		Columnnar		Columnnar	
Vase/Oval	2+1=3	Vase/Oval	2+1=3	Vase/Oval	2+1=3
Mix of both		Mix of both		Mix of both	
Leaves:		Leaves:		Leaves:	
Evergreen	0+1=1	Evergreen	0+1=1	Evergreen	1+0=1
Deciduous	2+1=2	Deciduous	2+1=3	Deciduous	1+0=1
Mix of both	1+0=1	Mix of both		Mix of both	
Color:		Color:		Color:	
Flowers		Flowers	1+0=1	Flowers	
Fall color	1+0=1	Fall color		Fall color	1+0=1
Neither	0+1=1	Neither	0+1=1	Neither	
Mix	1+0=1	Mix	2+0=2	Mix	2+0=2

Circle the characteristics you would like to see on each street.

Comments:

Melrose/Robertson

STREET TREES



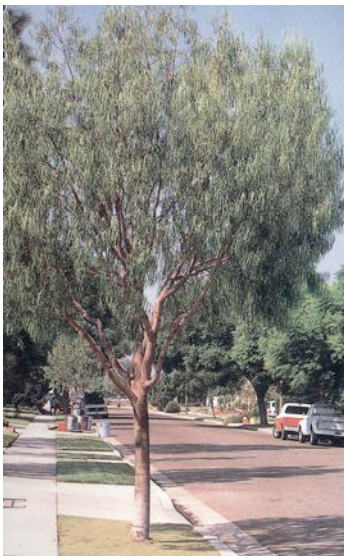
Sweetshade 1+0=1



Gold Medallion



Hong Kong Orchid 2+0=2



Australian Willow 2+0=2



Pink Trumpet 4+4=8



Chinese Flame 4+7=11

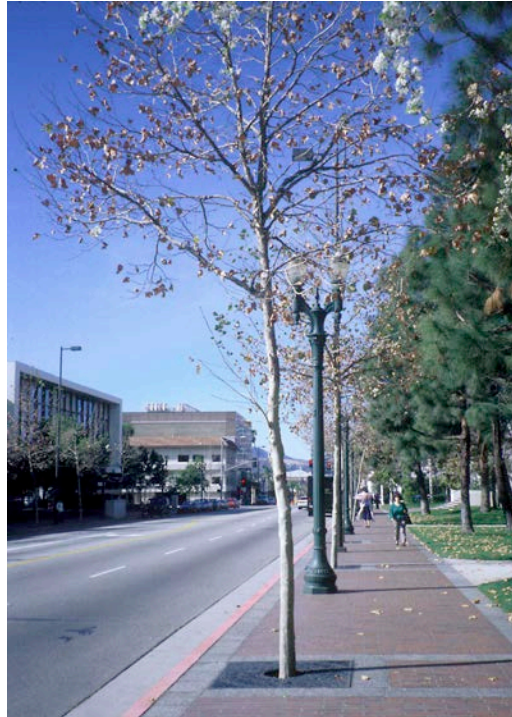
Circle trees you like; X out ones you don't like.

Put an M next to trees you'd like to see on Melrose and an R on ones you'd like to see on Robertson.

Comments:



London Plane 2+6=8



0+0=0 **(same tree!!)**



Evergreen Pear 3+6=9



African Tulip 2+0=2

Circle trees you like; X out ones you don't like.

Put an M next to trees you'd like to see on Melrose and an R on ones you'd like to see on Robertson.

Comments:

Beverly

STREET TREES



Sweet Gum 4+1=5



Southern Magnolia 1+2=3



Australian Flame 2+3=5



Ginkgo 3+7=10



London Plane 2+5=7



Mexican Sycamore 1+1=2

Circle trees you would like to see on Beverly; X out ones you don't like.

Comments:

Melrose & Robertson

STREET LIGHTS

What we heard:

Group 1 - Mid-height (20') only.

Group 2 - 1st choice: roadway (30') + low-level; second choice: roadway (30') + pedestrian poles (12') with 2 preferring mid-height only.



1. Roadway (30') only



2. Roadway (30') + pedestrian pole (12')* 0+5=5
2nd choice



3. Roadway (30') + low level* 1+4=5
1st choice



4. Roadway (30') + string lights*



5. Mid-height (20') only 3+2=5

If you prefer roadway lights:

- A. Existing
- B. New arms & luminaires
- C. New poles, arms & luminaires. 1+0=1

Circle the option you'd like for Melrose and label it M. Circle the option you'd like for Robertson and label it R. X out ones you don't like.

Comments: intimate & warm; roadway + low level on Melrose and roadway+string lights on Robertson.

Beverly

STREET LIGHTS

What we heard:

consensus support for roadway (30') + pedestrian (12'); new poles/luminaires.



1. Roadway (30') only



2. Roadway (30') + pedestrian pole (12')* 3+1=4

For roadway lights:

A. Existing

B. New arms & luminaires

C. New poles, arms & luminaires. 3+0=3

Circle the option you'd like for Beverly.
X out one you don't like.

Comments:
Keep it simple - most important: street trees & parkways

All Streets

STREET LIGHTS

What we heard:
consensus support for a timeless contemporary family of lights.

1+0=1



2+0=2



1. Historic replicas

1+4=5



3+0=3



2. Historic modified
1+1=2

1+0=1



1+0=1



2+3=5



0+3=3



3. Traditional
2+0=2

3+0=3



1+3=4



4+0=4



1+1=2



4. Modern
3+1=4

All Streets

CROSSWALK PAVING

What we heard:

Group 1 - zebra.

Group 2 - Zebra or a very visible higher quality pattern and, if possible, one that continues the sidewalk pattern so it unifies the pedestrian zone.



Zebra 3+5=8



Colored concrete* 1+1=2



Lithocrete* 1+0=1



Concrete pavers* 1+0=1



Brick* 3+0=3



Cobbles* 2+1=3

Circle the crosswalk paving you would like to see on the Avenues; X out ones you don't like.

Comments:

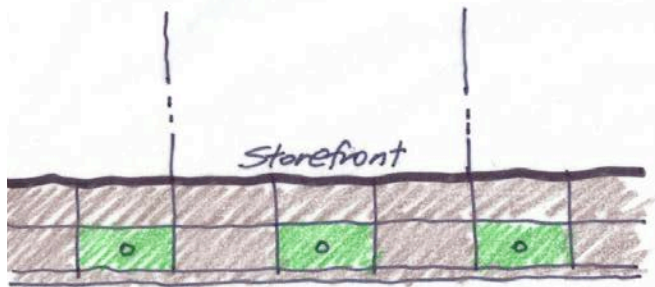
All Streets

SIDEWALK PAVING

What we heard:

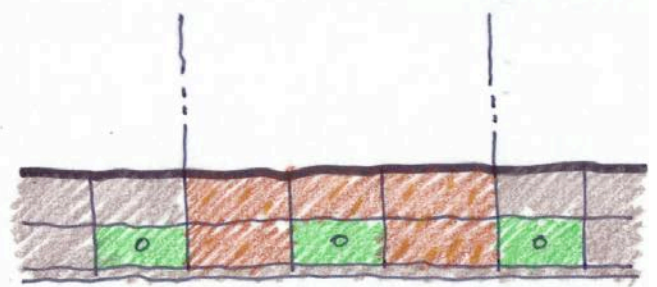
Group 1 - basic concrete with a well-executed contemporary, simple scoring pattern.

Group 2 - basic concrete (same as above) with limited upgrading, e.g., banding and/or curb extensions, in stone (preferred) or concrete pavers.

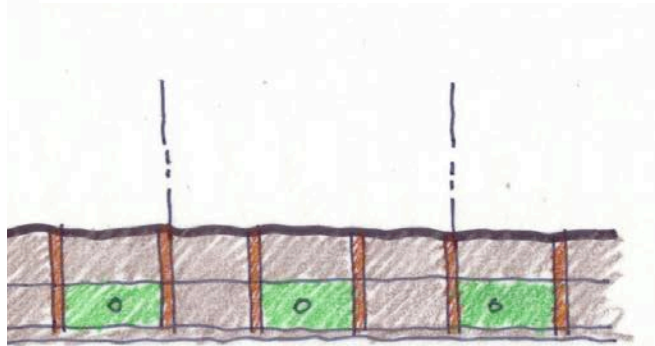


1. All one material:

- a. Basic $1+1=2$
- b. Upgraded* $1+0=1$



2. Basic except where upgraded by owner in the same pattern



3. Upgraded in limited areas* throughout for example, banding
 $0+5=5$



4. Upgraded only at curb extensions* or other special locations (specify:)
 $3+3=6$

Circle the type of paving pattern you would like to see on the Avenues; X out ones you don't like.

Comments:

All Streets

SIDEWALK PAVING

4+4=8



1+3=4



2+2=4



- 1. Concrete
- 2+1=3

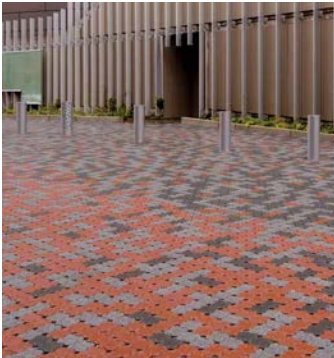
1+3=4



- 2. Concrete pavers*

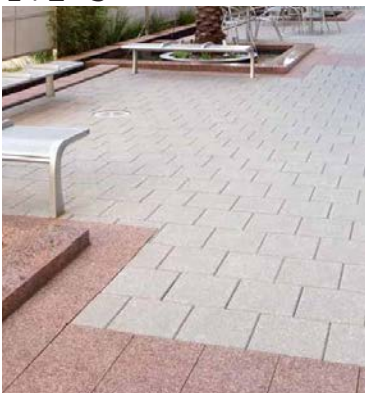


1+2=3



- 3. Permeable pavers*

1+2=3



2+2=4



0+1=1



- 4. Stone pavers*
- 1+1=2

1+1=2



Gettysburg Mist
Sawn sides, Thermal finish
1+1=2



Circle the paving materials you would like to see on the Avenues; X out ones you don't like.

Comments:
